

1.3 Rahmenprofile

04/2024

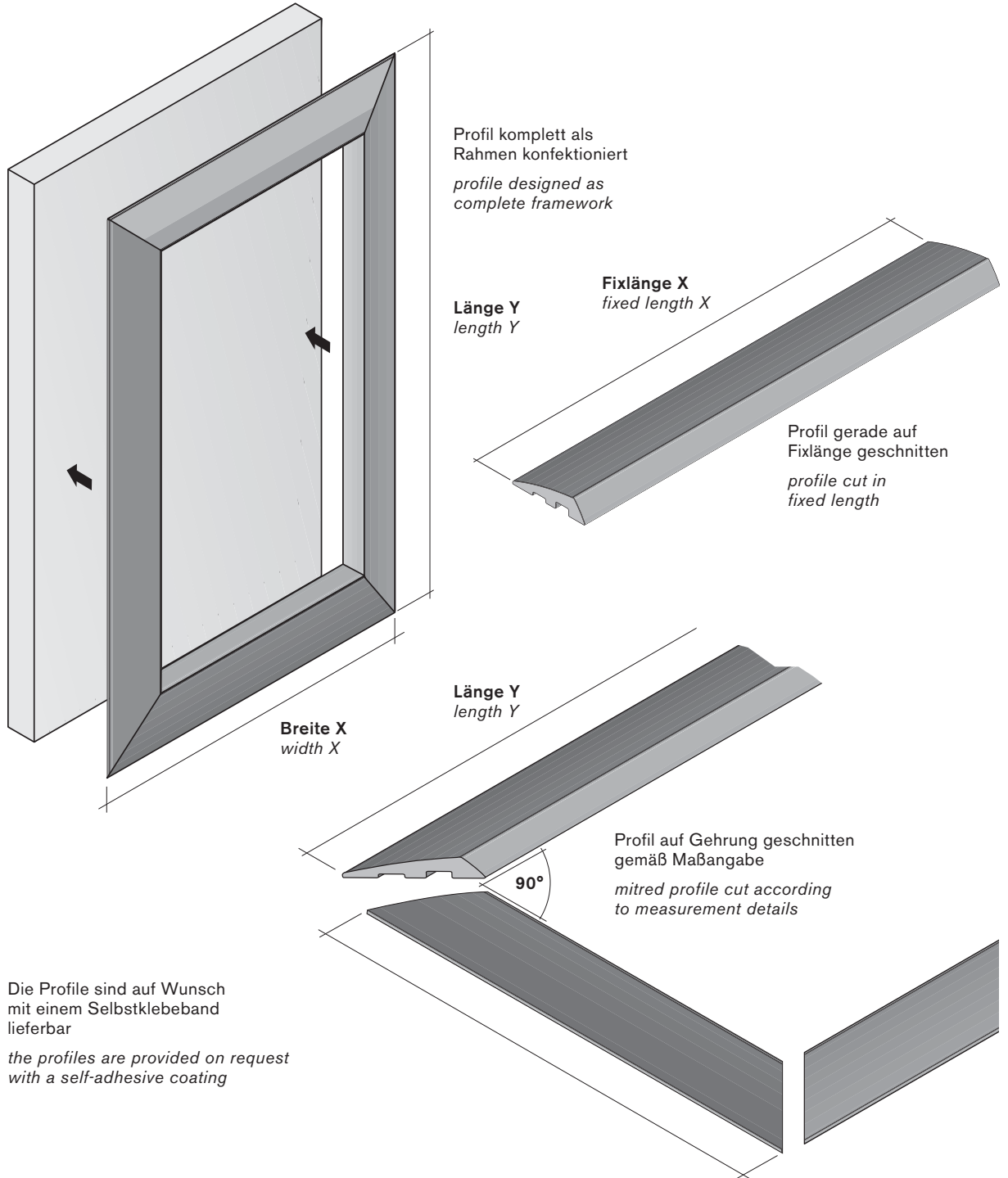


Rahmenprofile

frame profiles

Art.-Nr.
art.-no. Material
material

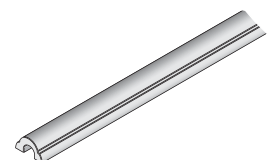
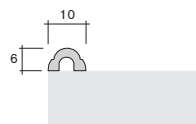
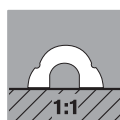
Lieferformen für Rahmenprofile 13.2610 bis 15.1300 (S. 1.3.01–1.3.09)
delivery forms for frame profiles 13.2610 to 15.1300 (p. 1.3.01–1.3.09)



13.2610

Rahmenprofil 10 x 6
frame profile 10 x 6

PS

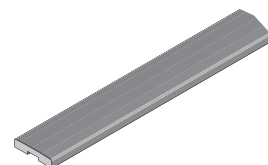
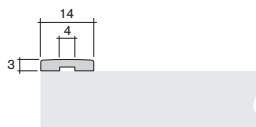


Rahmenprofile

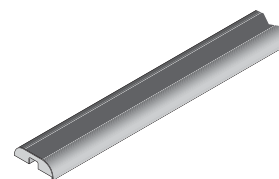
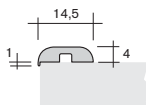
frame profiles

Art.-Nr.
art.-no. Material
material

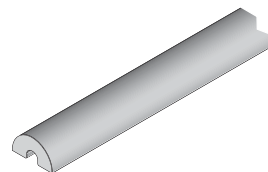
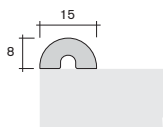
14.1800 **Rahmenprofil 14 x 3**
frame profile 14 x 3
PS



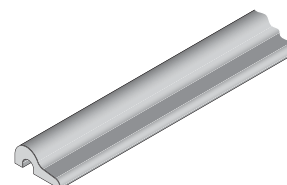
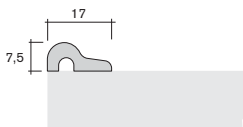
13.4050 **Rahmenprofil 14,5 x 4**
frame profile 14.5 x 4
PS



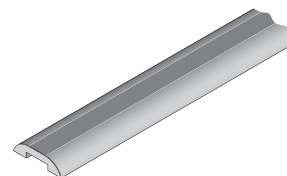
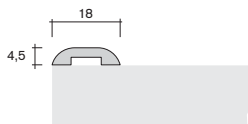
14.5810 **Rahmenprofil 15 x 8**
frame profile 15 x 8
PS



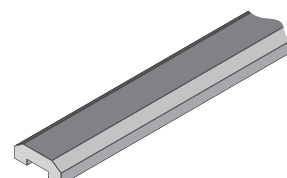
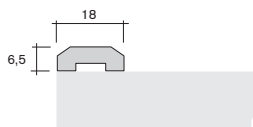
13.1140 **Rahmenprofil 17 x 7,5**
frame profile 17 x 7.5
PS



13.1250 **Rahmenprofil 18 x 4,5**
frame profile 18 x 4.5
PS



13.7000 **Rahmenprofil 18 x 6,5**
frame profile 18 x 6.5
PS



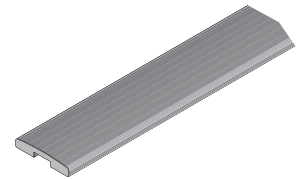
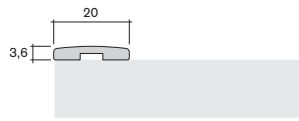
Rahmenprofile

frame profiles

Art.-Nr.
art.-no. Material
material

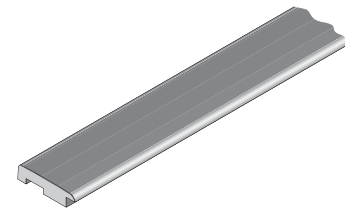
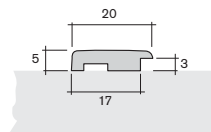
14.9100

Rahmenprofil 20 x 3,6
frame profile 20 x 3.6
PS



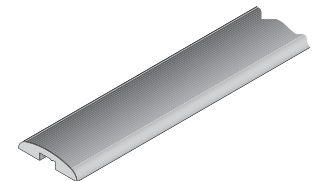
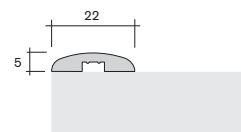
14.2920

Rahmenprofil 20 x 5
frame profile 20 x 5
PS



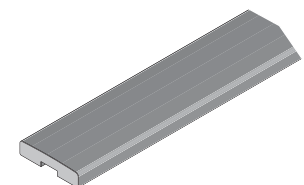
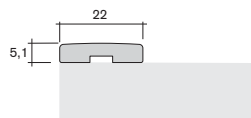
13.1600

Rahmenprofil 22 x 5
frame profile 22 x 5
PS



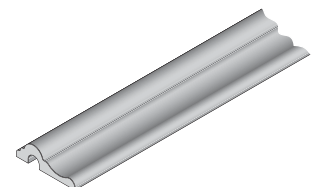
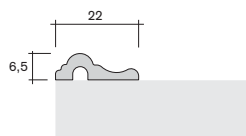
14.9080

Rahmenprofil 22 x 5,1
frame profile 22 x 5.1
PS



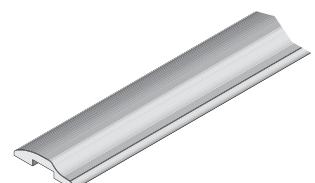
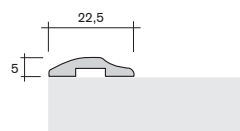
13.3850

Rahmenprofil 22 x 6,5
frame profile 22 x 6.5
PS



13.5940

Rahmenprofil 22,5 x 5
frame profile 22.5 x 5
PS

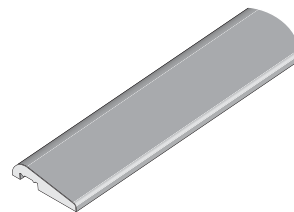
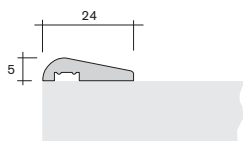


Rahmenprofile

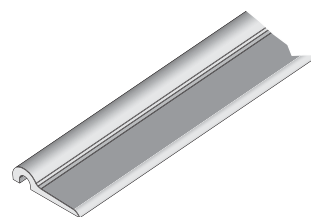
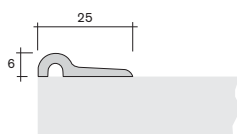
frame profiles

Art.-Nr.
art.-no. Material
material

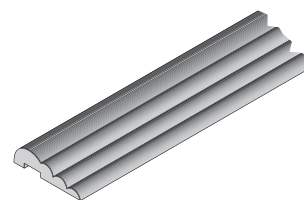
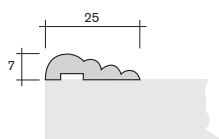
13.0860 **Rahmenprofil 24 x 5**
frame profile 24 x 5
PS



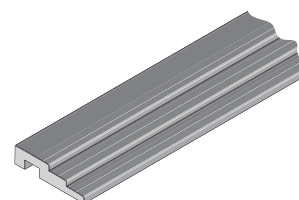
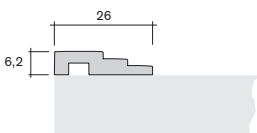
13.4650 **Rahmenprofil 25 x 6**
frame profile 25 x 6
PS



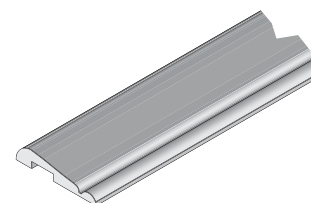
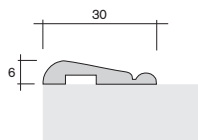
14.0620 **Rahmenprofil 25 x 7**
frame profile 25 x 7
PS



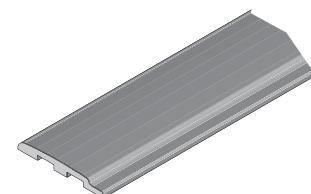
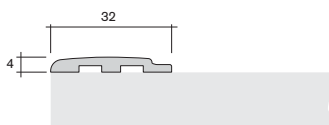
13.5970 **Rahmenprofil 26 x 6,2**
frame profile 26 x 6.2
PS



13.5720 **Rahmenprofil 30 x 6**
frame profile 30 x 6
PS



14.8860 **Rahmenprofil 32 x 4**
frame profile 32 x 4
PS



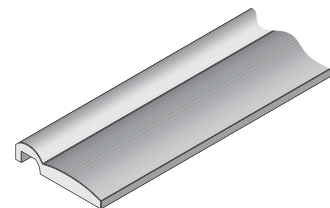
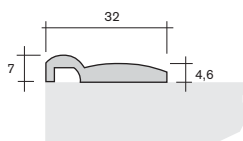
Rahmenprofile

frame profiles

Art.-Nr.
art.-no. Material
material

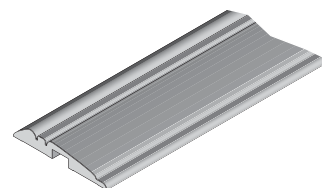
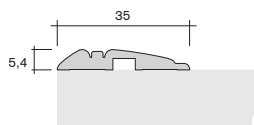
13.0550

Rahmenprofil 32 x 7
frame profile 32 x 7
PS



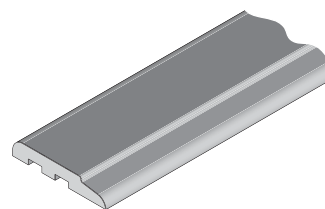
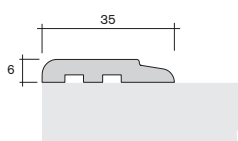
14.6060

Rahmenprofil 35 x 5,4
frame profile 35 x 5.4
PS



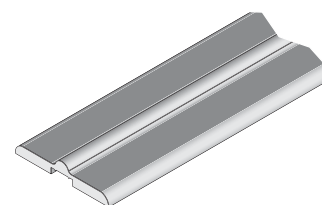
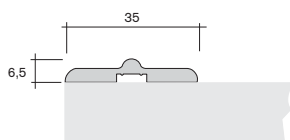
13.7420

Rahmenprofil 35 x 6
frame profile 35 x 6
PS



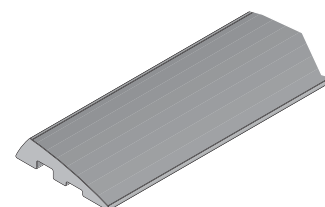
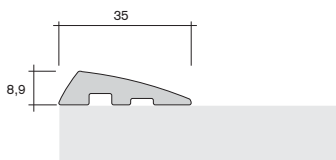
13.1550

Rahmenprofil 35 x 6,5
frame profile 35 x 6.5
PS



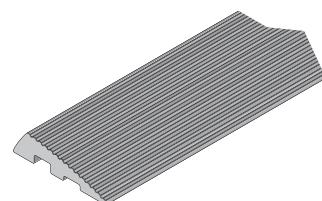
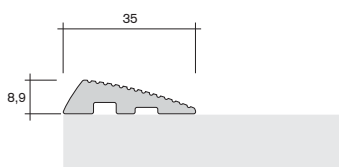
14.2380

Rahmenprofil 35 x 8,9
frame profile 35 x 8.9
PS



14.2740

Rahmenprofil 35 x 8,9
frame profile 35 x 8.9
PS

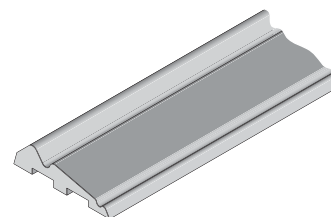
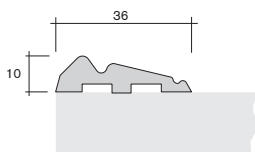


Rahmenprofile

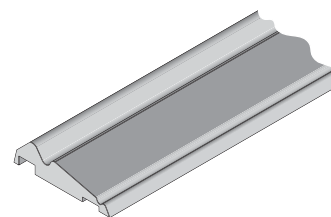
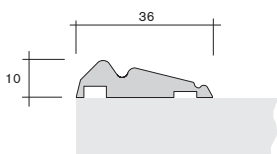
frame profiles

Art.-Nr.
art.-no. Material
material

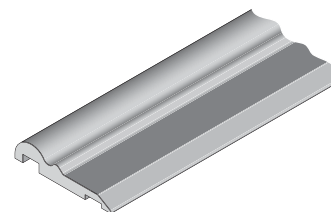
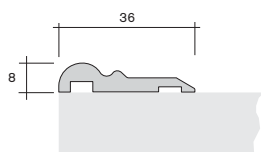
13.7140 **Rahmenprofil 36 x 10**
frame profile 36 x 10
PS



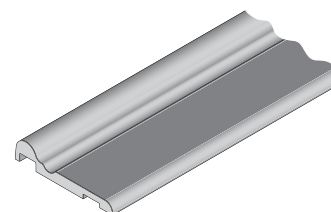
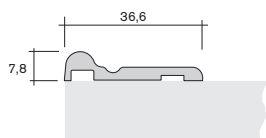
13.7150 **Rahmenprofil 36 x 10**
frame profile 36 x 10
PS



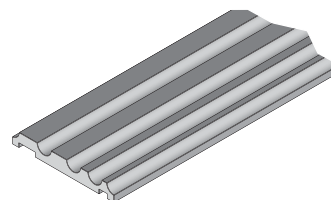
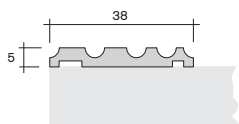
13.7360 **Rahmenprofil 36 x 8**
frame profile 36 x 8
PS



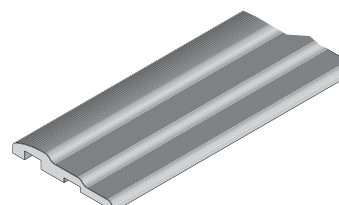
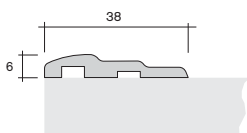
13.7300 **Rahmenprofil 36,6 x 7,8**
frame profile 36.6 x 7.8
PS



14.0560 **Rahmenprofil 38 x 5**
frame profile 38 x 5
PS



14.5880 **Rahmenprofil 38 x 6**
frame profile 38 x 6
PS



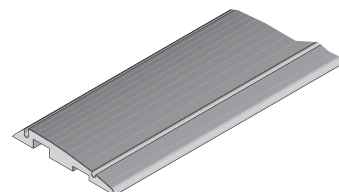
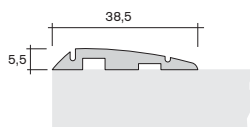
Rahmenprofile

frame profiles

Art.-Nr.
art.-no. Material
material

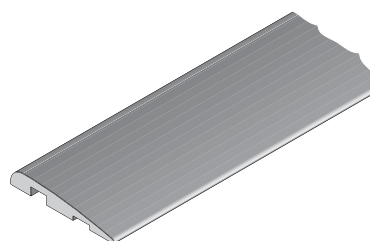
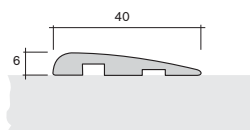
14.5980

Rahmenprofil 38,5 x 5,5
frame profile 38.5 x 5.5
PS



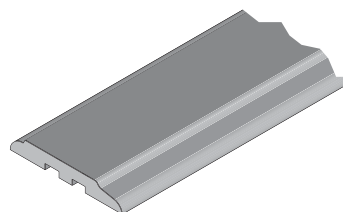
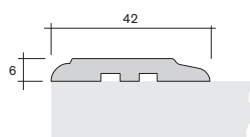
14.9300

Rahmenprofil 40 x 6
frame profile 40 x 6
PS



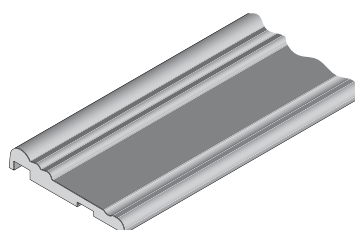
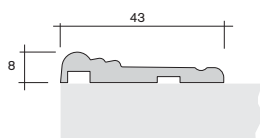
13.7400

Rahmenprofil 42 x 6
frame profile 42 x 6
PS



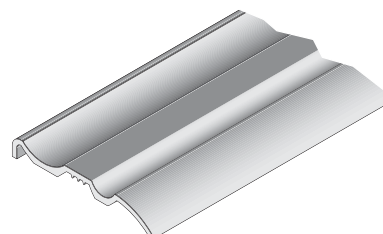
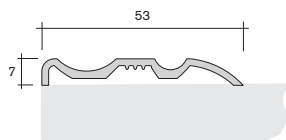
13.7280

Rahmenprofil 43 x 8
frame profile 43 x 8
PS



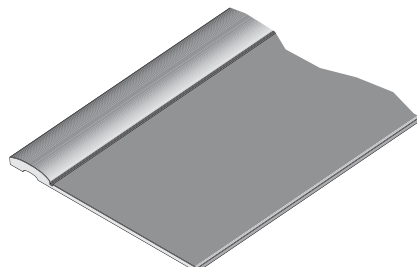
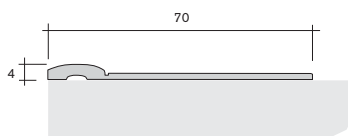
13.0420

Rahmenprofil 53 x 7
frame profile 53 x 7
PS



13.0910

Rahmenprofil 70 x 4
frame profile 70 x 4
PS

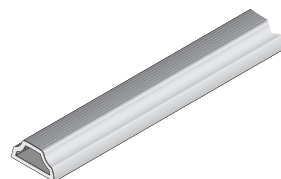
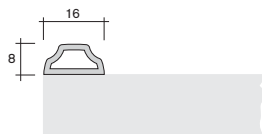


Rahmenprofile

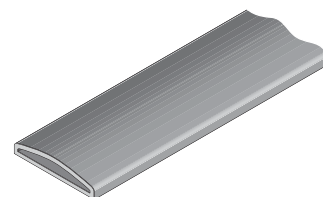
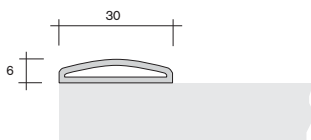
frame profiles

Art.-Nr.
art.-no. Material
material

15.6220 **Rahmenprofil 16 x 8**
frame profile 16 x 8
PS

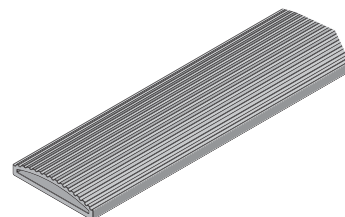
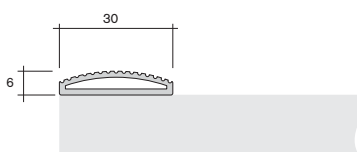


15.7060 **Rahmenprofil 30 x 6**
frame profile 30 x 6
PS



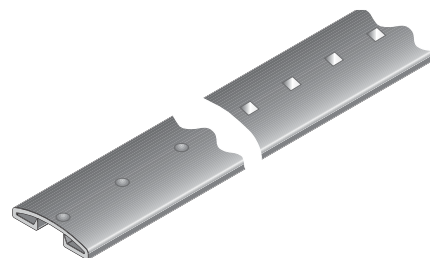
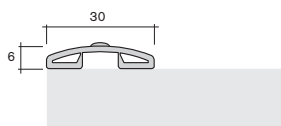
05.5090 **Innenverbinder 90°**
internal connecting piece 90°
PS

15.7640 **Rahmenprofil 30 x 6 gerillt**
frame profile 30 x 6 grooved
PS

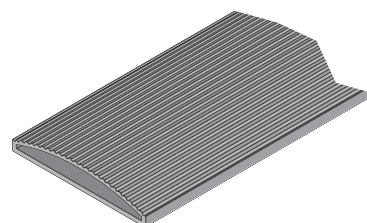
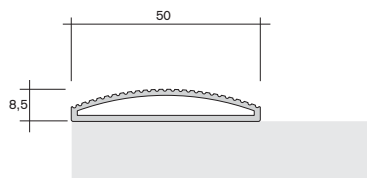


05.5090 **Innenverbinder 90°**
internal connecting piece 90°
PS

15.8060 **Zierprofil 30 x 6**
mit unterschiedlichen Stanzdekoren
ornamental profile 30 x 6
with different stamp decors
PS

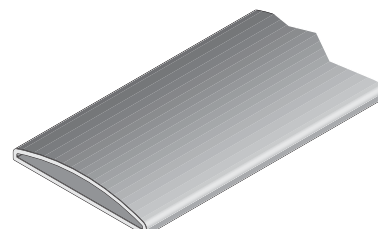
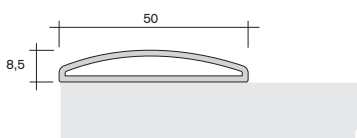


15.7620 **Rahmenprofil 50 x 8,5 gerillt**
frame profile 50 x 8.5 grooved
PS



05.4950 **Innenverbinder 90°**
internal connecting piece 90°
PS

15.6740 **Rahmenprofil 50 x 8,5**
frame profile 50 x 8.5
PS



05.4950 **Innenverbinder 90°**
internal connecting piece 90°
PS

Rahmenprofile

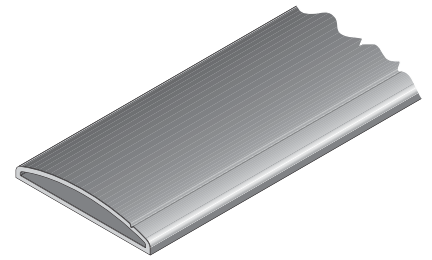
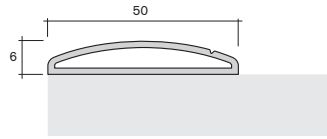
frame profiles

Art.-Nr.
art.-no. Material
material

15.8040

**Rahmenprofil 50 x 8,5
mit Nut**
frame profile 50 x 8.5
with nut

PS



05.4950

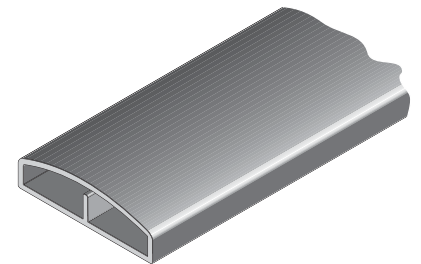
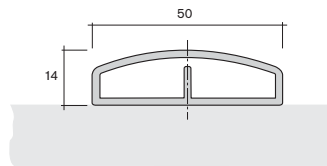
Innenverbinder 90°
internal connecting piece 90°

PS

15.7420

Rahmenprofil 50 x 14
frame profile 50 x 14

PS



15.7320

**Rahmenprofil 30 x 24,6
für 16er Seite**
frame profile 30 x 24.6
for 16er board

PS

05.6030

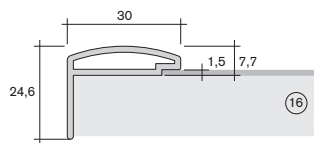
Endkappe links
end cap left

PS

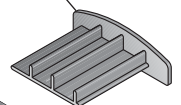
05.6040

Endkappe rechts
end cap right

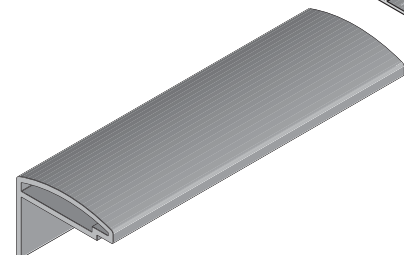
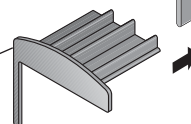
PS



05.6030

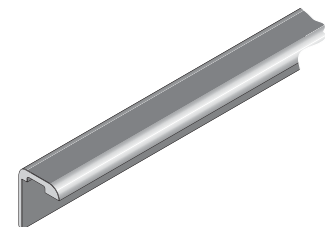
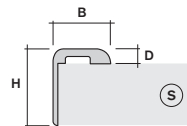


05.6040



Rahmenprofil
frame profile

PS



Breite B (mm)
width B (mm)

Höhe H (mm)
height H (mm)

Dicke D (mm)
thickness D (mm)

Plattendicke S (mm)
shelf-thickness S (mm)

14.9160

14

19,0

3,7

15,0

14.9180

19

21,5

4,0

17,5

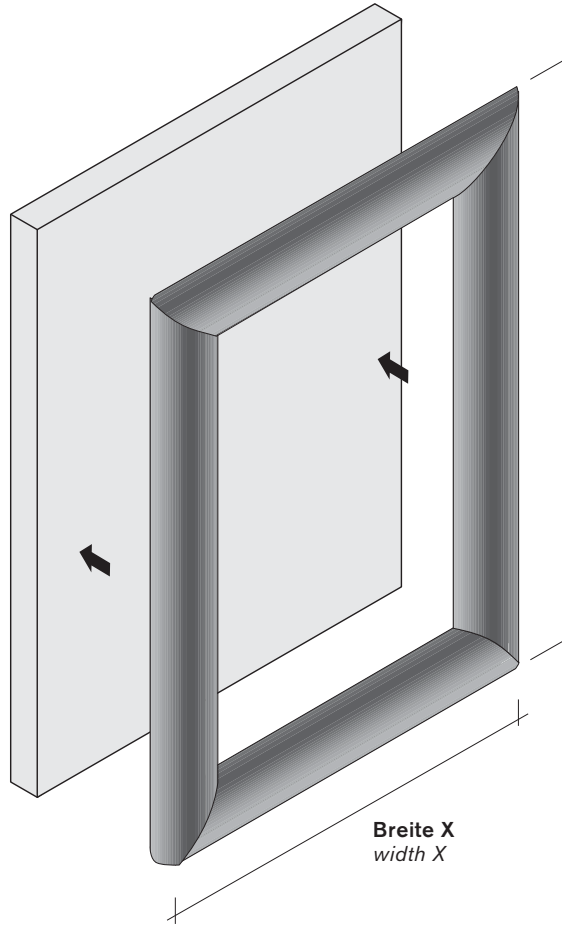
Rahmenprofile

frame profiles

Art.-Nr.
art.-no. Material
material

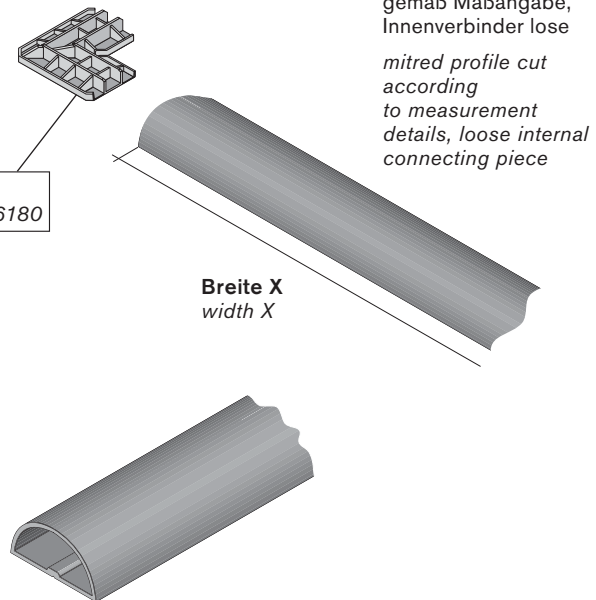
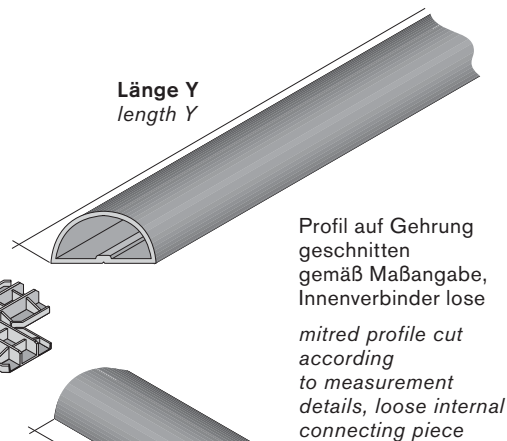
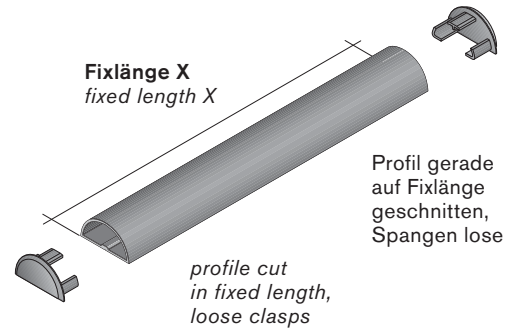
Lieferformen für Rahmenprofil 15.8100

delivery forms for frame profile 15.8100



Profil komplett als Rahmen mit Innenverbinder 05.6180 konfektioniert

profile designed as complete framework with 05.6180 internal connecting piece



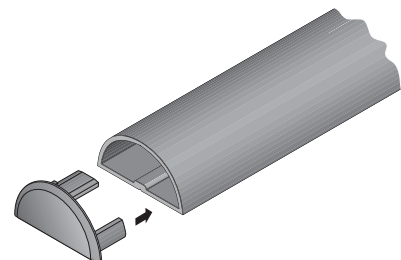
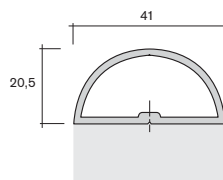
Die Profile sind auf Wunsch mit einem Selbstklebeband lieferbar
the profiles are provided on request with a self-adhesive coating

15.8100 **Rahmenprofil 41 x 20,5**
frame profile 42 x 20.5

PS

05.6190 **Endkappe**
endcap

PS

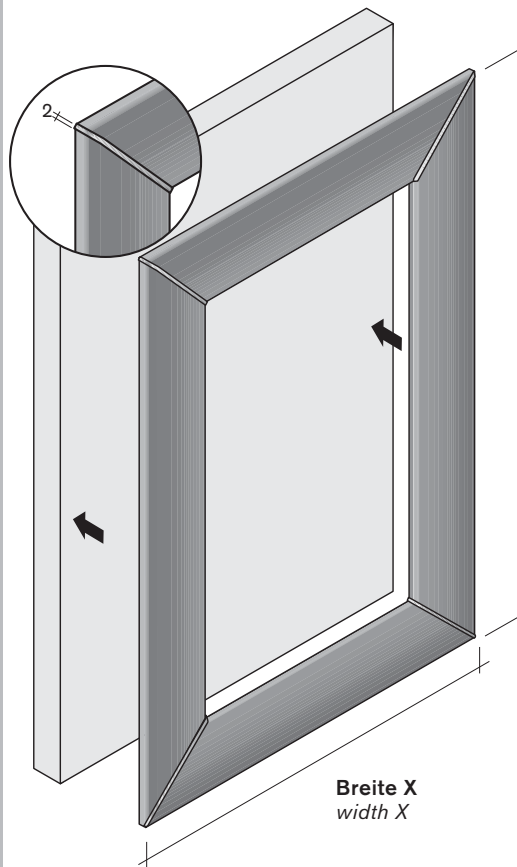


Rahmenprofile

frame profiles

Art.-Nr.
art.-no. Material
material

Lieferformen für Rahmenprofile 13.5940 bis 15.7280 (S. 1.3.11–1.3.16)
delivery forms for frame profiles 13.5940 to 15.7280 (p. 1.3.11–1.3.16)



Profil komplett als Rahmen
mit Spange konfektioniert
profile designed as
complete framework with clasp

Fixlänge X
fixed length X

Profil gerade
auf Fixlänge
geschnitten,
Spangen lose

profile cut
in fixed length,
loose clasps

Länge Y
length Y

Profil auf Gehrung
geschnitten
gemäß Maßangabe,
Spangen lose

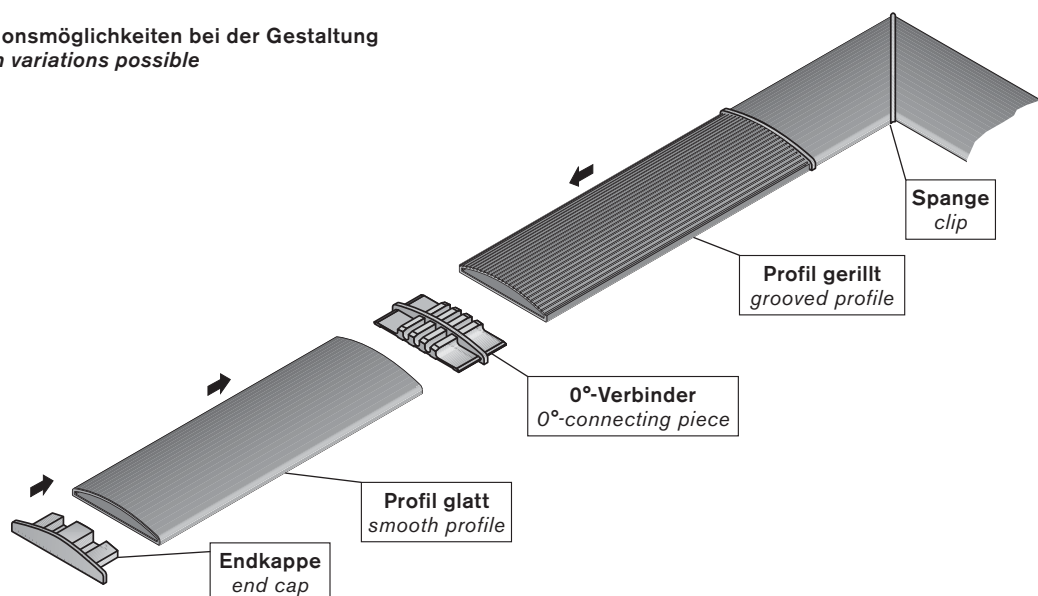
mitred profile cut
according
to measurement
details, loose clasps

Breite X
width X

Die Profile sind auf Wunsch
mit einem Selbstklebeband
lieferbar

the profiles are provided on request
with a self-adhesive coating

Variationsmöglichkeiten bei der Gestaltung
design variations possible



Rahmenprofile

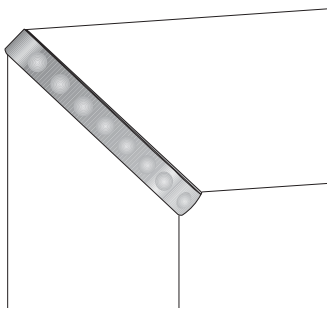
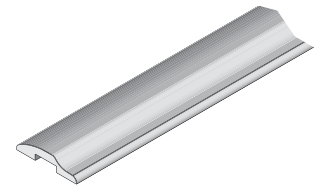
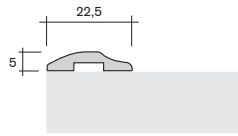
frame profiles

Art.-Nr.
art.-no. Material
material

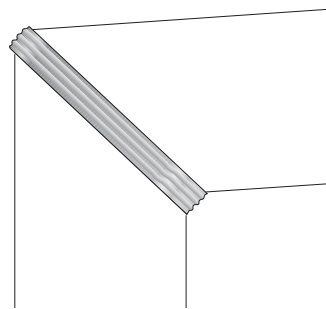
13.5940

Rahmenprofil 22,5 x 5
frame profile 22.5 x 5

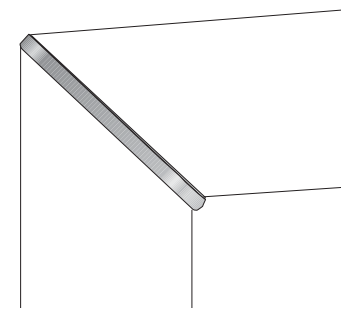
PS



05.5010



05.5020

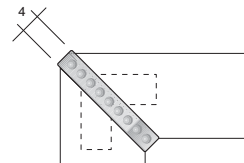


05.5030

Bezeichnung/description

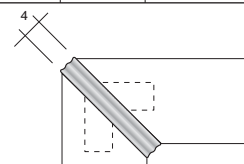
05.5010

Spange 90°
clip 90°
PS



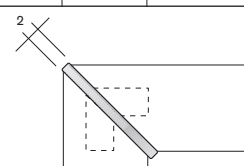
05.5020

Spange 90°
clip 90°
PS



05.5030

Spange 90°
clip 90°
PS



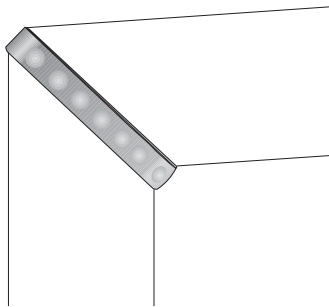
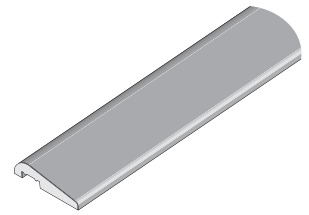
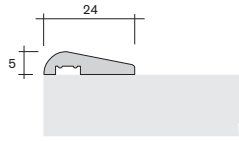
Rahmenprofile

frame profiles

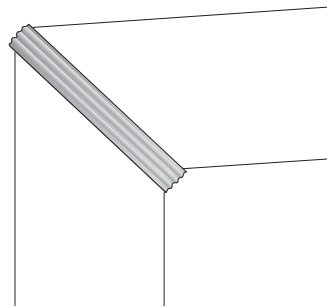
Art.-Nr.
art.-no. Material
material

13.0860

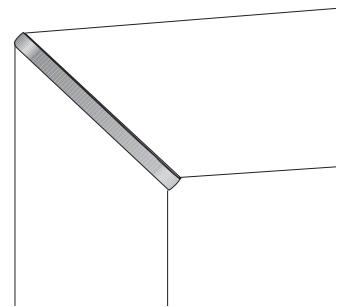
Rahmenprofil 24 x 5
frame profile 24 x 5
PS



05.5040



05.5050

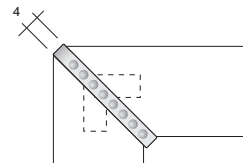


05.5060

Bezeichnung/description

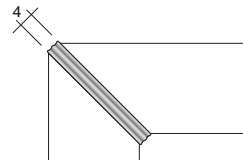
05.5040

Spange 90°
clip 90°
PS



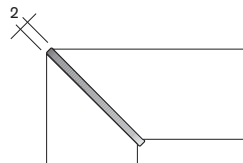
05.5050

Spange 90°
clip 90°
PS



05.5060

Spange 90°
clip 90°
PS



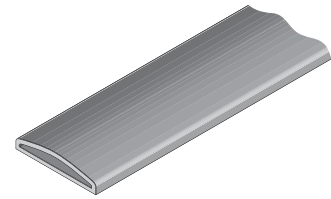
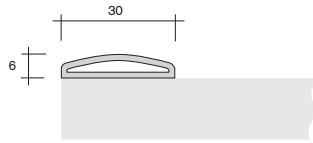
Rahmenprofile

frame profiles

Art.-Nr.
art.-no. Material
material

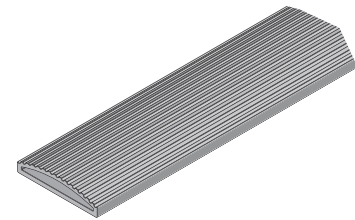
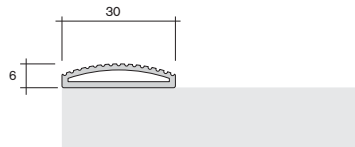
15.7060

Rahmenprofil 30 x 6
frame profile 30 x 6
PS



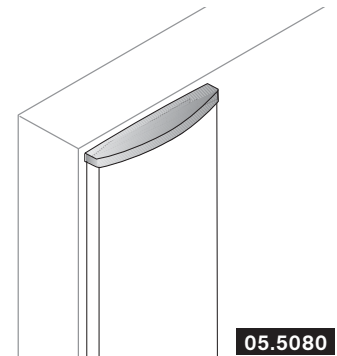
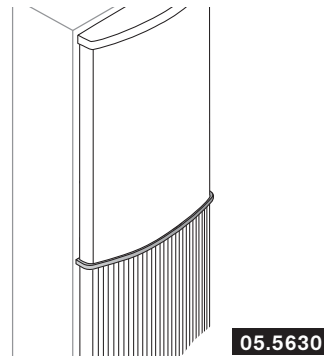
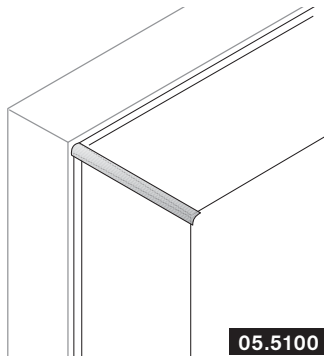
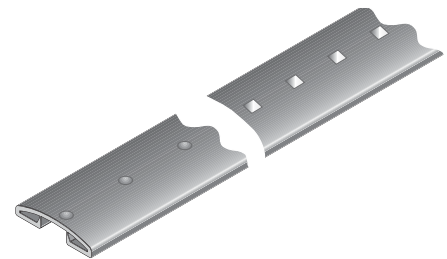
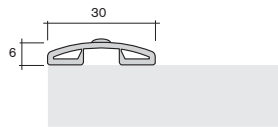
15.7640

Rahmenprofil 30 x 6 gerillt
frame profile 30 x 6 grooved
PS



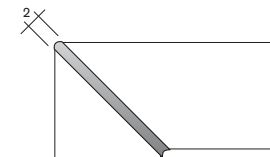
15.8060

Zierprofil 30 x 6
mit unterschiedlichen Stanzdekoren
ornamental profile 30 x 6
with different stamp decors
PS

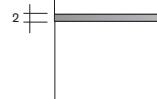


Bezeichnung/description

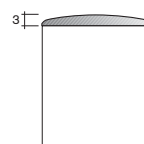
05.5100 Spange 90°
clip 90°
PS



05.5630 0° Spange
0° clip
PS



05.5080 Endkappe
end cap
PS



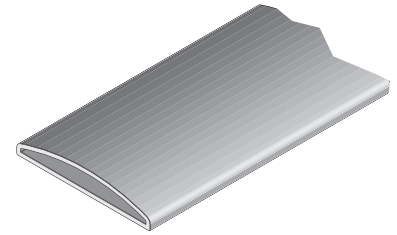
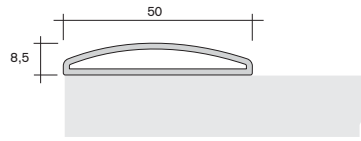
Rahmenprofile

frame profiles

Art.-Nr.
art.-no. Material
material

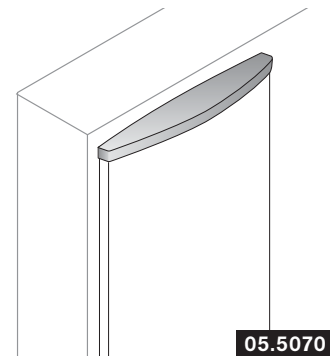
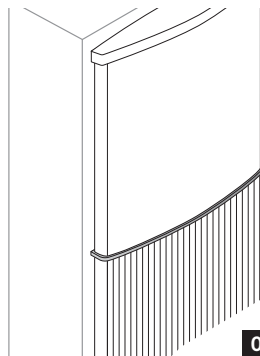
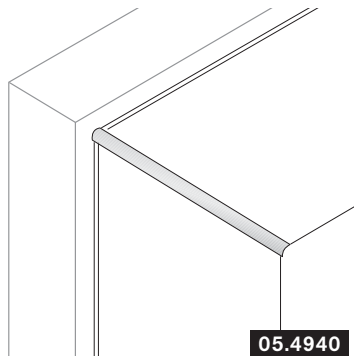
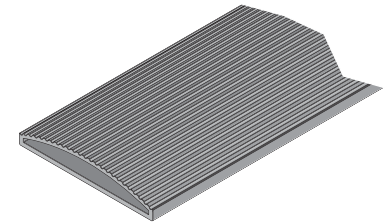
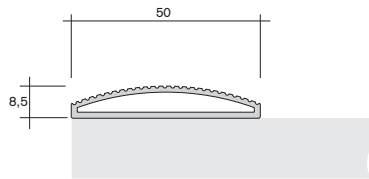
15.6740

Rahmenprofil 50 x 8,5
frame profile 50 x 8.5
PS



15.7620

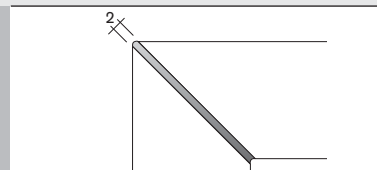
Rahmenprofil 50 x 8,5 gerillt
frame profile 50 x 8.5 grooved
PS



Bezeichnung/description

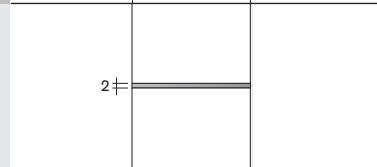
05.4940

Spange 90°
clip 90°
PS



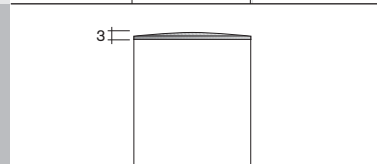
05.5280

0° Spange
0° clip
PS



05.5070

Endkappe
end cap
PS



Rahmenprofile

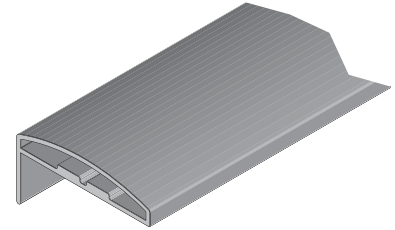
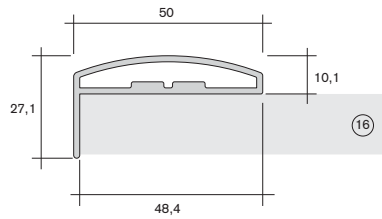
frame profiles

Art.-Nr.
art.-no. Material
material

15.7280

Rahmenprofil 50 x 27,1
frame profile 50 x 27.1

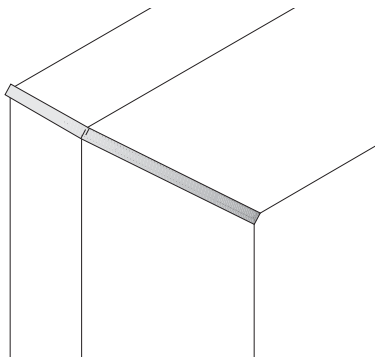
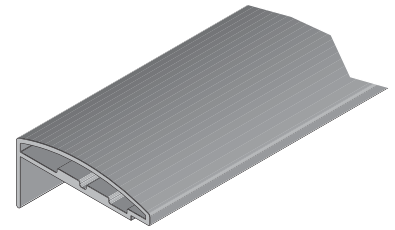
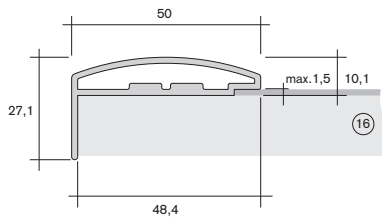
PS



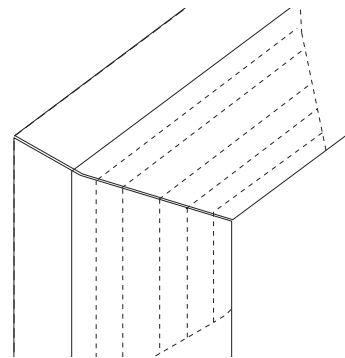
15.7300

Rahmenprofil 50 x 27,1
frame profile 50 x 27.1

PS



05.5640



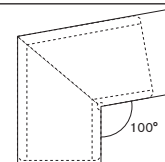
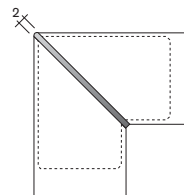
05.5330

Bezeichnung/description

05.5640 Spange 90° für 15.7280
clip 90° for 15.7280
PS

05.6300 Spange 90° für 15.7300
clip 90° for 15.7300
PS

05.5330 Innenverbinder 100°
internal connecting piece 100°
PS

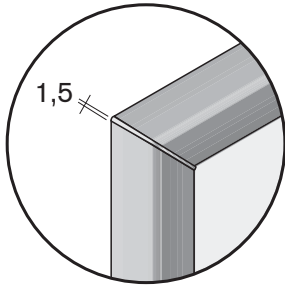


Rahmenprofile

frame profiles

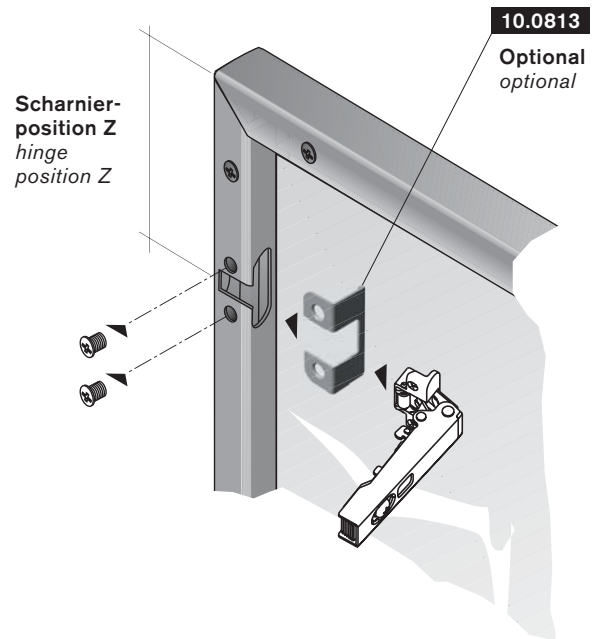
Art.-Nr. Material
art.-no. material

Glastürrahmensystem 15.7680 glass door frame system 15.7680

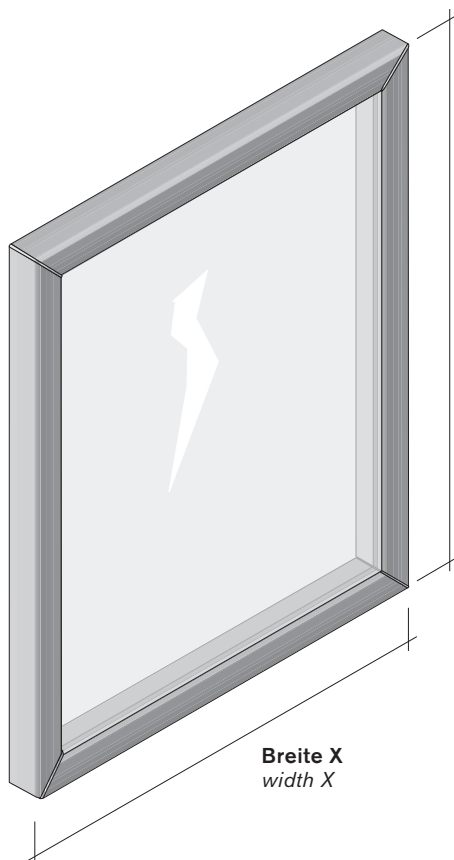


Rahmenprofil 15.7680
mit Gehrungsspangen,
mit glatter Oberfläche und Weichlippen
für Glas-Toleranzausgleich und festen Sitz

frame profile 15.7680
with mitre ranges,
with smooth surface and soft lips
for glass-tolerance alignment and fixed base



Rahmentüren für 4 mm Glas
frame doors for 4 mm glass



Länge Y
length Y

Breite X
width X

Wir fertigen Ihre Türen auf Fixmaße;
dazu benötigen wir:

- genaues Breitemaß X und Längenmaß Y
- Scharniertyp
- Scharnierposition Z

Ermittlung der Glasmaße:

Von den Rahmenmaßen müssen folgende Werte
abgezogen werden:

Rahmenbreite (mm) - 18 mm = Glasbreite (mm)
Rahmenlänge (mm) - 18 mm = Glaslänge (mm)

We create your doors according to fixed
measurements; and therefore need:

- specific width X and length Y measurements
- hinge type
- hinge position Z

Determination of glass measurements:

The following values need to be derived
from the framework measurements:

framework width (mm) - 18 mm = glass width (mm)
framework length (mm) - 18 mm = glass length (mm)

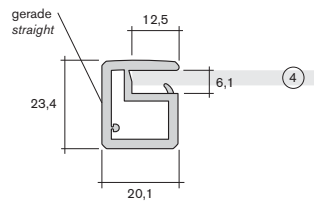
Rahmenprofile

frame profiles

Art.-Nr.
art.-no. Material
material

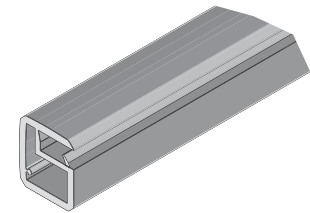
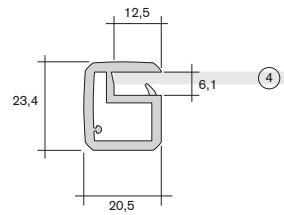
15.7670

Rahmenprofil für Glastüren
20,1 x 23,4 (4 mm Glas)
frame profile for glass doors
20.1 x 23.4 (4 mm glass)
ABS/TPE



15.7680

Rahmenprofil für Glastüren
20,5 x 23,4 (4 mm Glas)
frame profile for glass doors
20.5 x 23.4 (4 mm glass)
ABS/TPE



05.5710

Winkelverbinder 90° mit Schattenfuge
42 x 42
angle joint 90° with shadow gap
42 x 42
ABS



05.7080

Winkelverbinder 90° ohne Schattenfuge
42 x 42
angle joint 90° without shadow gap
42 x 42
ABS



10.0813

Blechwinkel 42,5 x 17 x 15,5
2 x Senkloch
sheet steel angle 42.5 x 17 x 15.5
2 x sink hole



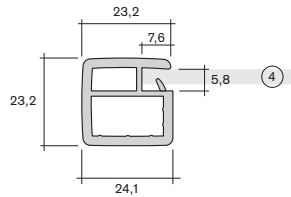
Rahmenprofile

frame profiles

Art.-Nr.
art.-no. Material
material

15.9160

Rahmenprofil für Glastüren
24,1 x 23,2 (4 mm Glas)
frame profile for glass doors
24.1 x 23.2 (4 mm glass)
ABS/TPE



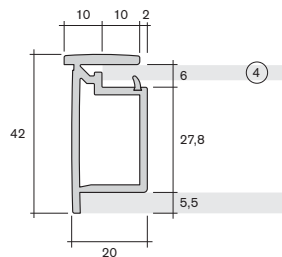
05.7110

Winkelverbinder 90° ohne Schattenfuge
39,75 x 39,75
angle joint 90° without shadow gap
39.75 x 39.75
ABS



20.7790

Rahmenprofil für Glastüren
22 x 42 (4 mm Glas)
frame profile for glass doors
22 x 42 (4 mm glass)
ABS/TPU



05.9720

Winkelverbinder 90° mit Schattenfuge
45,8 x 45,8
angle joint 90° with shadow gap
45.8 x 45.8
ABS

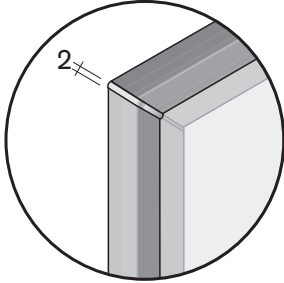


Rahmenprofile

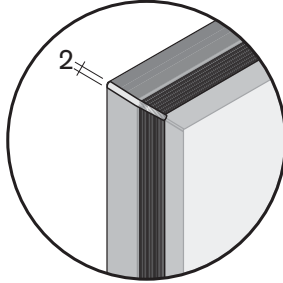
frame profiles

Art.-Nr.
art.-no. Material
material

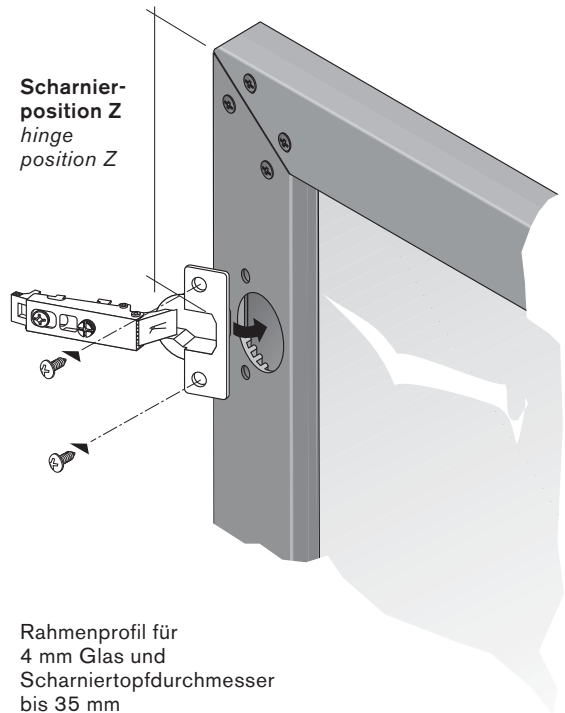
Glastürrahmensystem 15.7740 und 15.7800 glass door frame system 15.7740 and 15.7800



Rahmenprofil 15.7740
mit Gehrungsspangen,
mit glatter Oberfläche
*frame profile 15.7740
with mitre ranges,
with smooth surface*

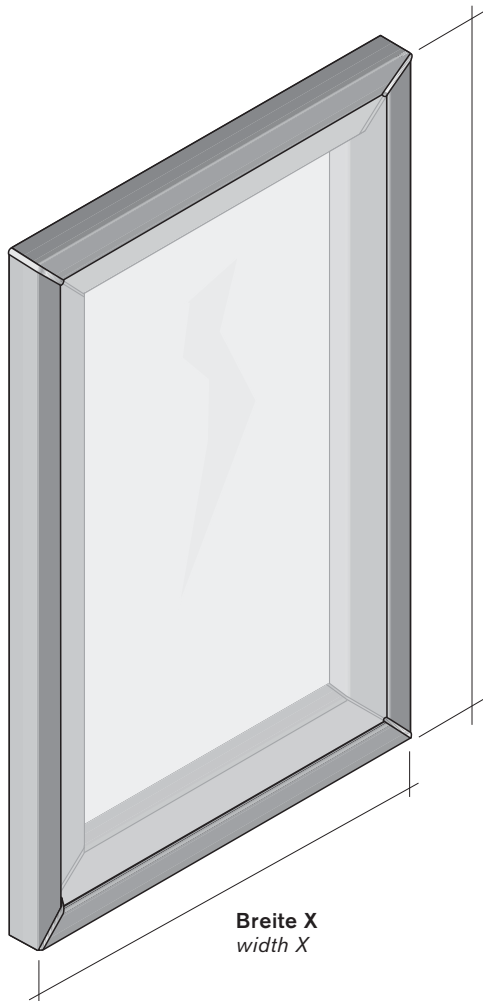


Rahmenprofil 15.7800
mit Gehrungsspangen,
mit gerillter Oberfläche
*frame profile 15.7800
with mitre ranges,
with grooved surface*



Rahmenprofil für
4 mm Glas und
Scharniertopfdurchmesser
bis 35 mm

*frame profile for
4 mm glass and
hinge pot diameter
up to 35 mm*



Länge Y
length Y

Breite X
width X

Wir fertigen Ihre Türen auf Fixmaße;
dazu benötigen wir:

- genaues Breitenmaß X und Längenmaß Y
- Scharniertyp
- Scharnierposition Z

Ermittlung der Glasmaße:

Von den Rahmenmaßen müssen folgende Werte
abgezogen werden:

Rahmenbreite (mm) - 24 mm = Glasbreite (mm)
Rahmenlänge (mm) - 24 mm = Glaslänge (mm)

*We create your doors according to fixed
measurements; and therefore need:*

- specific width X and length Y measurements
- hinge type
- hinge position Z

Determination of glass measurements:

*The following values need to be derived
from the framework measurements:*

*framework width (mm) - 24 mm = glass width (mm)
framework length (mm) - 24 mm = glass length (mm)*

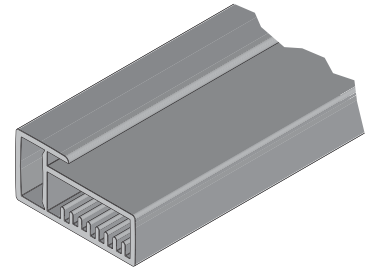
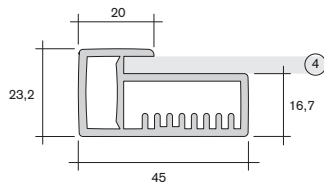
Rahmenprofile

frame profiles

Art.-Nr.
art.-no. Material
material

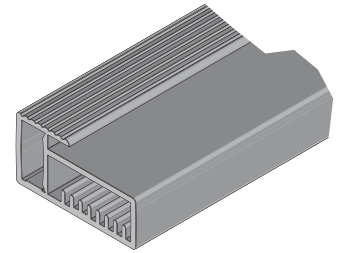
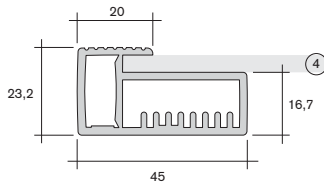
15.7740

Rahmenprofil für Glastüren
45 x 23,2 (4 mm Glas)
Oberfläche glatt
frame profile for glass doors
45 x 23.2 (4 mm glass)
smooth surface
PS



15.7800

Rahmenprofil für Glastüren
45 x 23,2 (4 mm Glas)
Oberfläche gerillt
frame profile for glass doors
45 x 23.2 (4 mm glass)
grooved surface
PS



05.5700

Spange 90°
clip 90°
PS

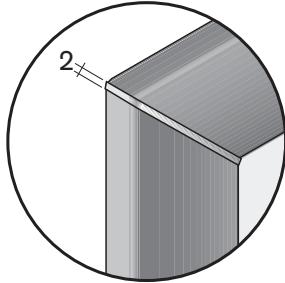


Rahmenprofile

frame profiles

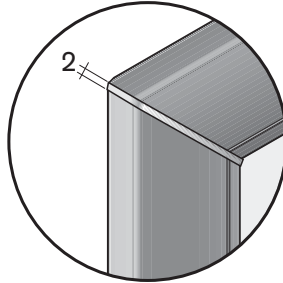
Art.-Nr.
art.-no. Material
material

Glastürrahmensystem 15.7170 und 15.7080 glass door frame system 15.7170 and 15.7080



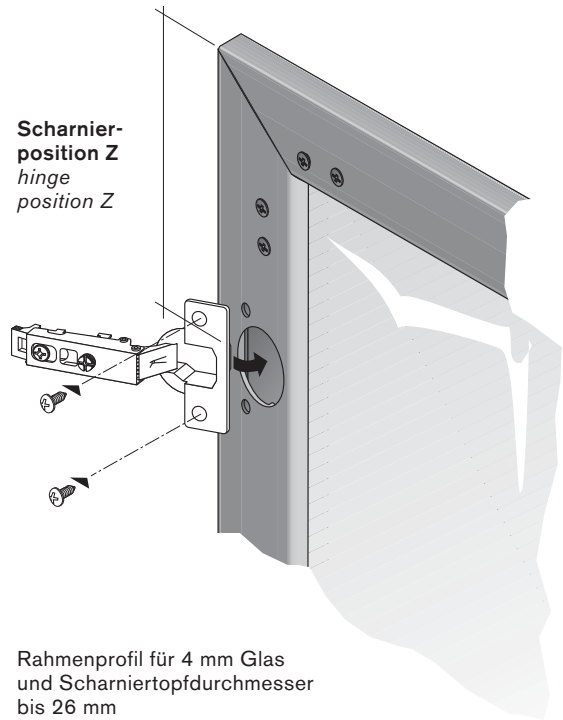
Rahmenprofil 15.7080
mit Gehrungsspangen,
einfarbig

*frame profile 15.7170
with mitre ranges,
one colour*



Rahmenprofil 15.7170
mit Gehrungsspangen,
zweifarbig

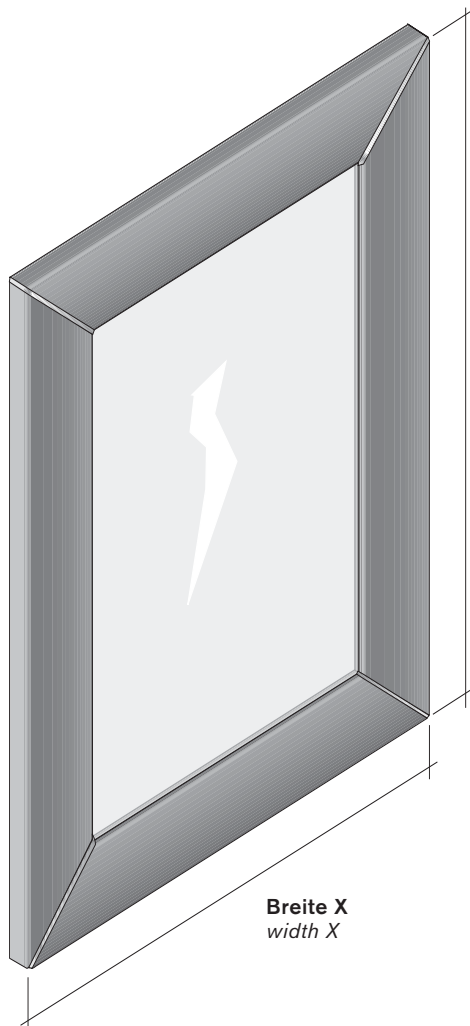
*frame profile 15.7170
with mitre ranges,
two colours*



Scharnier-
position Z
hinge
position Z

Rahmenprofil für 4 mm Glas
und Scharniertopfdurchmesser
bis 26 mm

*frame profile for 4 mm glass
and hinge pot diameter
up to 26 mm*



Länge Y
length Y

Breite X
width X

Wir fertigen Ihre Türen auf Fixmaße;
dazu benötigen wir:

- genaues Breitenmaß X und Längenmaß Y
- Scharniertyp
- Scharnierposition Z

Ermittlung der Glasmaße:

Von den Rahmenmaßen müssen folgende Werte
abgezogen werden:

Rahmenbreite (mm) - 78 mm = Glasbreite (mm)
Rahmenlänge (mm) - 78 mm = Glaslänge (mm)

*We create your doors according to fixed
measurements; and therefore need:*

- specific width X and length Y measurements
- hinge type
- hinge position Z

Determination of glass measurements:

*The following values need to be derived
from the framework measurements:*

*framework width (mm) - 78 mm = glass width (mm)
framework length (mm) - 78 mm = glass length (mm)*

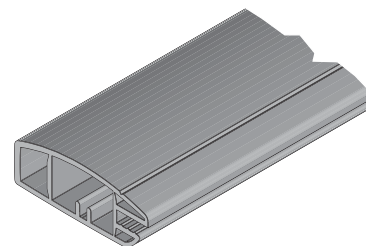
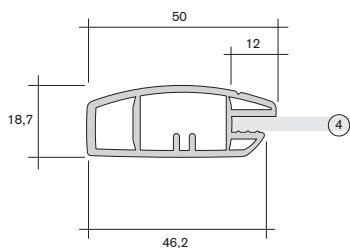
Rahmenprofile

frame profiles

Art.-Nr. Material
art.-no. material

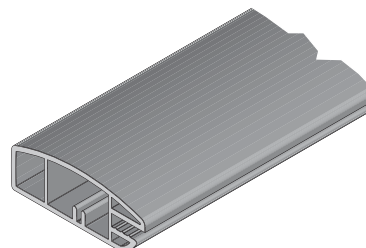
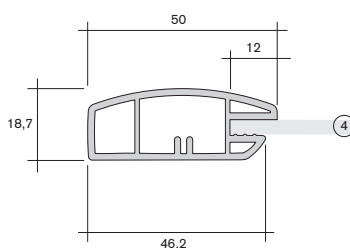
15.7170

**Rahmenprofil für Glastüren
mit Fase 50 x 18,7 (4 mm Glas)
in zweifarbigter Ausführung**
*frame profile for glass doors
with bevel 50 x 18.7 (4 mm glass)
designed in two colours*
ABS



15.7080

**Rahmenprofil für Glastüren
50 x 18,7 (4 mm Glas)**
*frame profile for glass doors
50 x 18.7 (4 mm glass)*
ABS



05.5110

Spange 90°
clip 90°
ABS

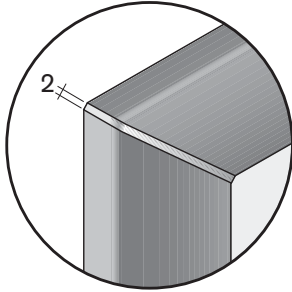


Rahmenprofile

frame profiles

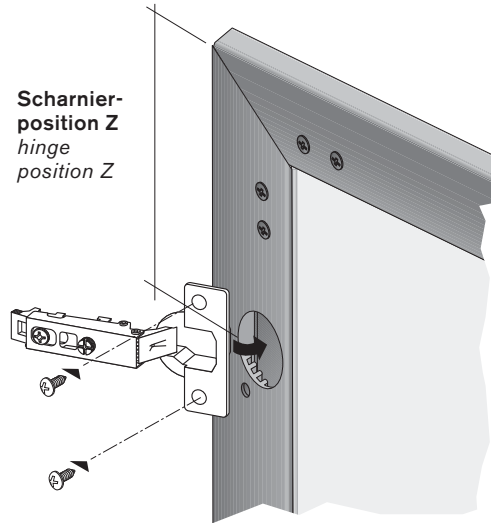
Art.-Nr.
art.-no. Material
material

Glastürrahmensystem 15.7500 glass door frame system 15.7500

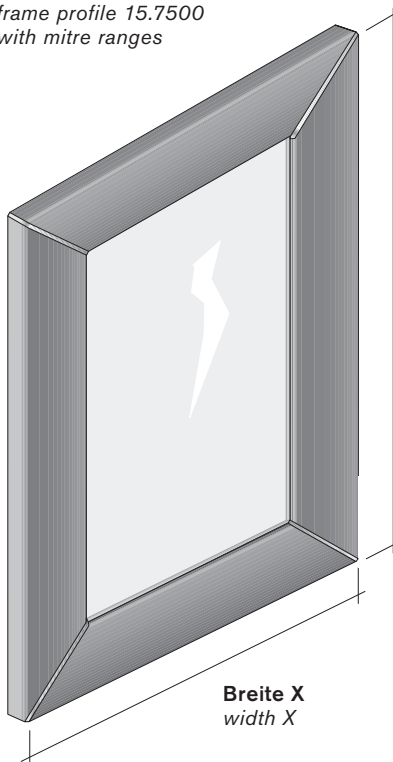


Rahmenprofil 15.7500
mit Gehrungsspangen
frame profile 15.7500
with mitre ranges

Rahmenprofil für 4 mm
Glas und Scharniertopf-
durchmesser bis 35 mm
frame profile for 4 mm
glass and hinge pot
diameter up to 35 mm



Scharnier-
position Z
hinge
position Z



Länge Y
length Y

Breite X
width X

Wir fertigen Ihre Türen auf Fixmaße;
dazu benötigen wir:

- genaues Breitenmaß X und Längenmaß Y
- Scharniertyp
- Scharnierposition Z

Ermittlung der Glasmaße:

Von den Rahmenmaßen müssen folgende Werte
abgezogen werden:

Rahmenbreite (mm) - 88 mm = Glasbreite (mm)
Rahmenlänge (mm) - 88 mm = Glaslänge (mm)

We create your doors according to fixed
measurements; and therefore need:

- specific width X and length Y measurements
- hinge type
- hinge position Z

Determination of glass measurements:

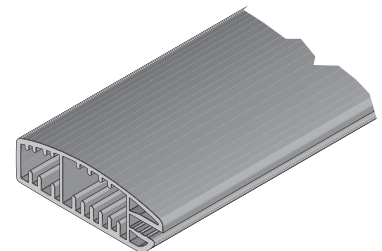
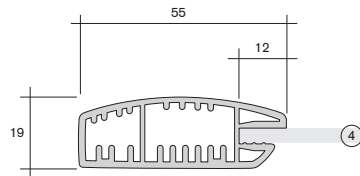
The following values need to be derived
from the framework measurements:

framework width (mm) - 88 mm = glass width (mm)
framework length (mm) - 88 mm = glass length (mm)

15.7500

Rahmenprofil für Glastüren
55 x 19 (4 mm Glas)
frame profile for glass doors
55 x 19 (4 mm glass)

ABS



05.5610

Spange 90°
clip 90°

ABS

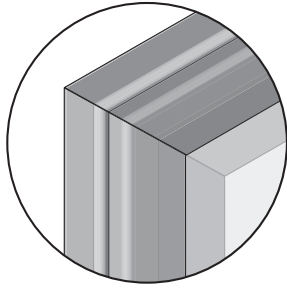


Rahmenprofile

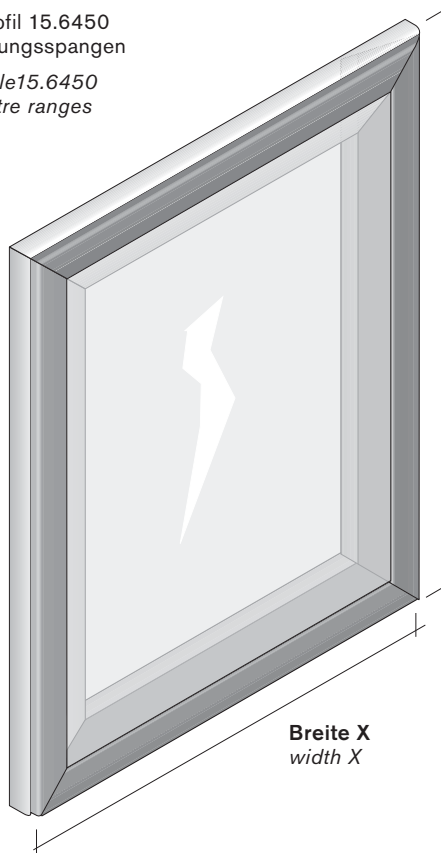
frame profiles

Art.-Nr.
art.-no. Material
material

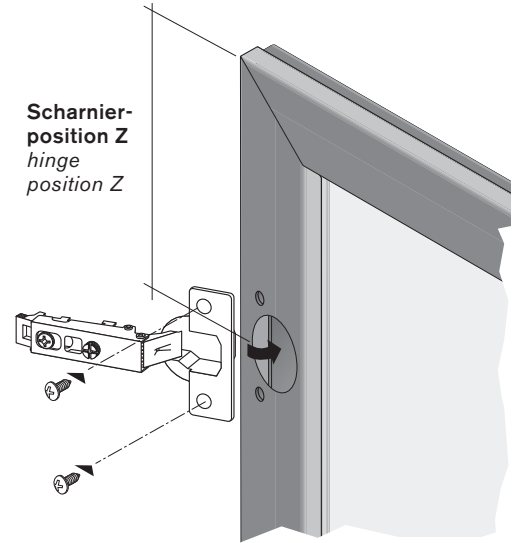
Glastürrahmensystem 15.6450
glass door frame system 15.6450



Rahmenprofil 15.6450
ohne Gehrungsspangen
*frame profile 15.6450
without mitre ranges*



**Scharnier-
position Z**
*hinge
position Z*



Rahmenprofilssystem für 4 mm Glas
und Scharniertopfdurchmesser
bis 35 mm

Rahmenprofil und Klippprofil können
unterschiedliche Oberflächen aufweisen

Die Eckwinkel werden
unsichtbar verschraubt

*frame profile for 4 mm glass
and hinge pot diameter
up to 35 mm*

*different surfaces can be created for the
framework and clip profiles*

*the corner prices
are screwed in invisibly*

15.6400

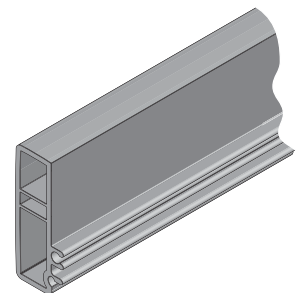
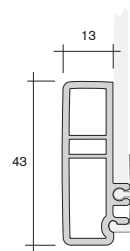
Glastürrahmen 13 x 43
glass door frame 13 x 43

ABS

05.4820

Innenverbinder 90°
*internal connecting piece
90°*

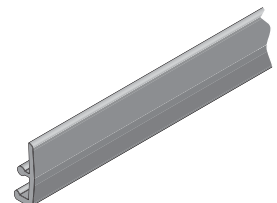
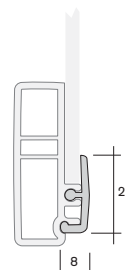
ABS



15.6450

Klippprofil 8 x 21
clip profile 8 x 21

ABS



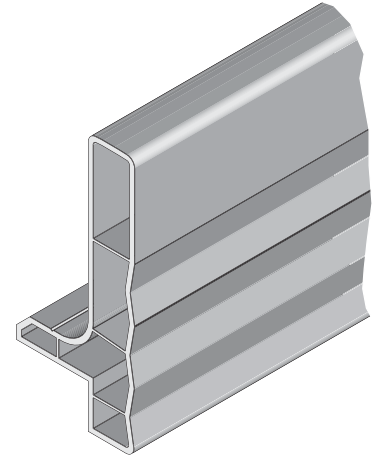
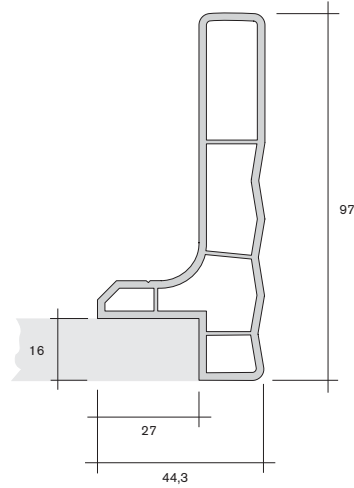
Rahmenprofile

frame profiles

Art.-Nr.
art.-no. Material
material

15.5000

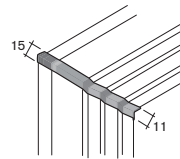
Rahmenprofil 44,3 x 97
frame profile 44.3 x 97
PS



Bezeichnung/description

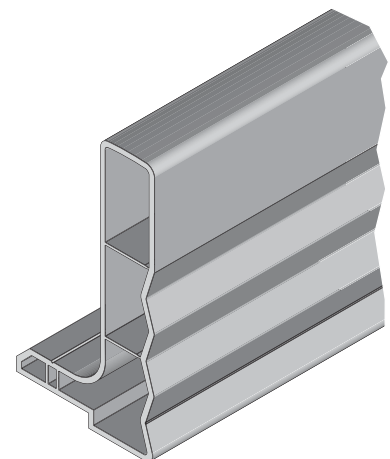
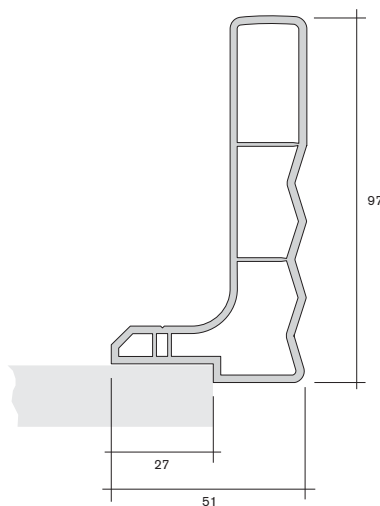
23.4611

Spange 2 tlg.
clip 2 parts
PS



14.5960

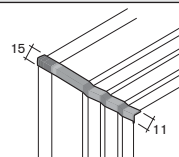
Rahmenprofil 51 x 97
frame profile 51 x 97
PS



Bezeichnung/description

23.4631

Spange 2 tlg.
clip 2 parts
PS



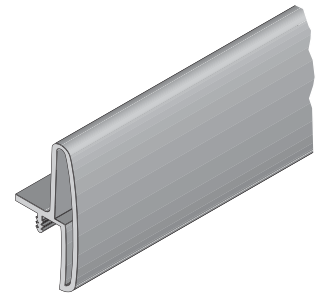
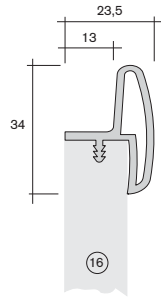
Rahmenprofile

frame profiles

Art.-Nr.
art.-no. Material
material

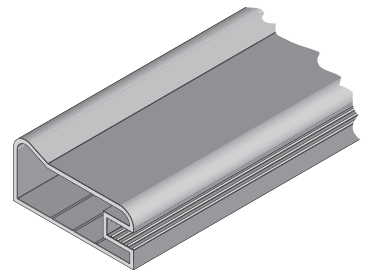
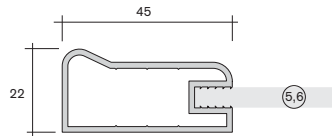
15.3220

Rahmenprofil 23,5 x 34
frame profile 23.5 x 34
PS



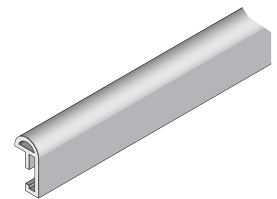
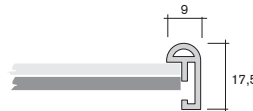
15.1300

Rahmenprofil 45 x 22
frame profile 45 x 22
PS



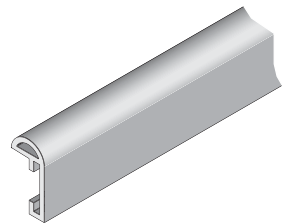
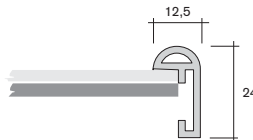
15.6840

Bilderrahmenprofil 9 x 17,5
picture frame profile 9 x 17.5
PS



15.6820

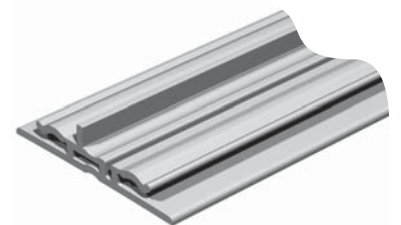
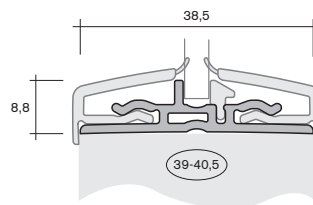
Bilderrahmenprofil 12,5 x 24
picture frame profile 12.5 x 24
PS



20.7430

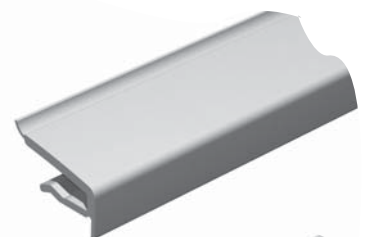
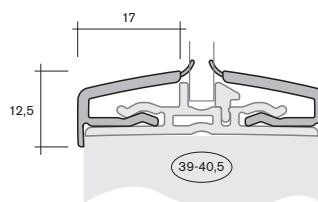
Türausschnittrahmen für Zimmertüren
frame door cutout for room doors

Glasrahmen Grundprofil
glass frame profile
PS



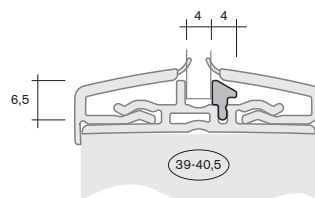
20.7410

Glasrahmen Dekorprofil
glass frame decorative profile
PS/TPE



20.7390

Glasrahmen Keder
glass frame piping
PS

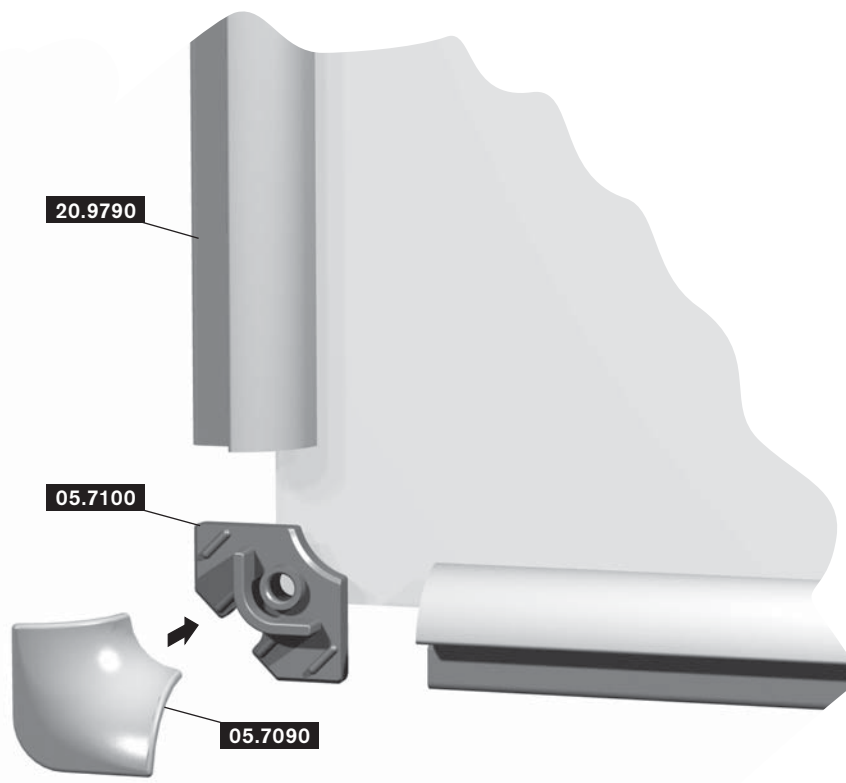
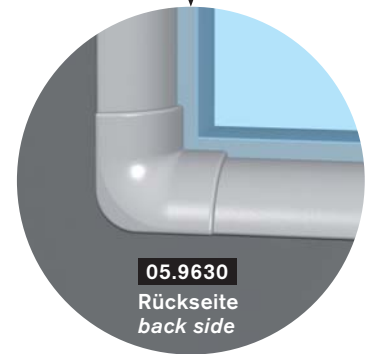
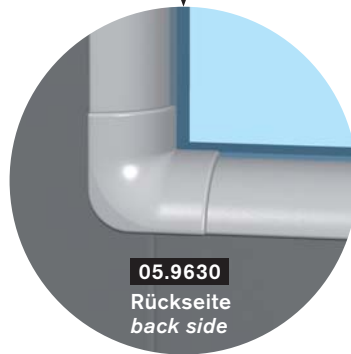
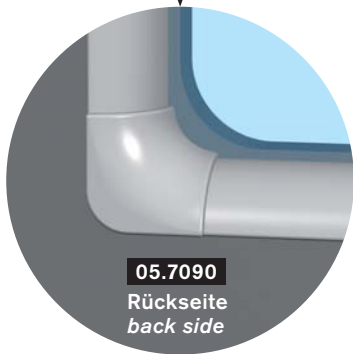
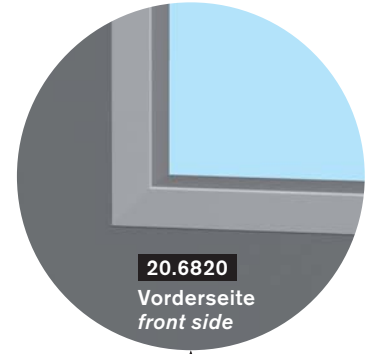


Rahmenprofile

frame profiles

Art.-Nr.
art.-no. Material
material

Glasrahmensystem 20.9790
glass frame system 20.9790



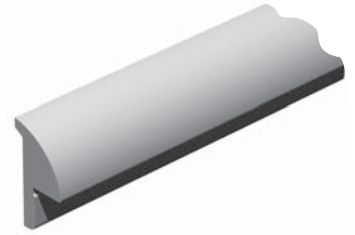
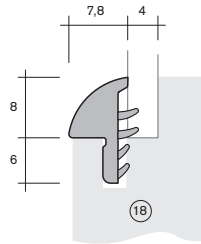
Rahmenprofile

frame profiles

Art.-Nr.
art.-no. Material
material

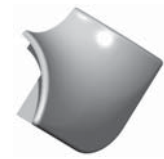
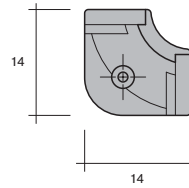
20.9790

Glaskehlprofil
glass coving profile
ABS/TPU



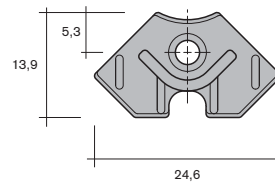
05.7090

Oberteil Ecke 90°
upper part corner 90°
ABS



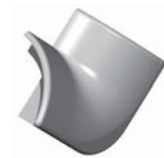
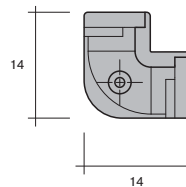
05.7100

Unterteil Ecke 90°
bottom part corner 90°
ABS



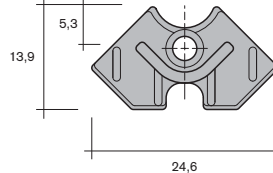
05.9630

Oberteil Ecke 90°, eckig
upper part corner 90°, angular
ABS



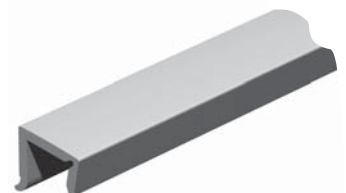
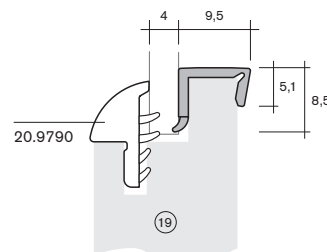
05.9640

Unterteil Ecke 90°, eckig
bottom part corner 90°, angular
ABS



20.6820

Rahmenprofil
frame profile
PS/TPE

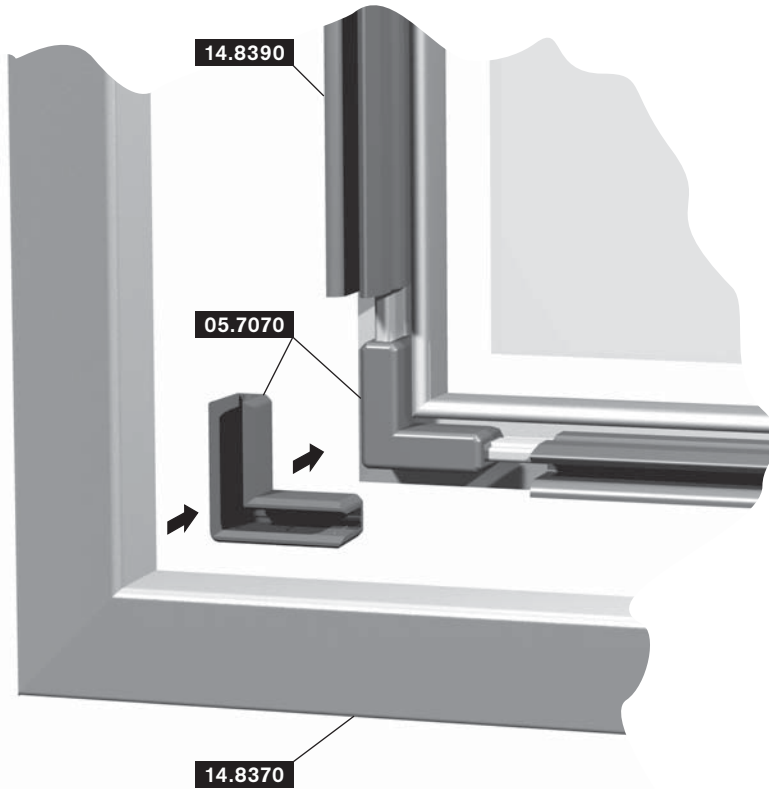


Rahmenprofile

frame profiles

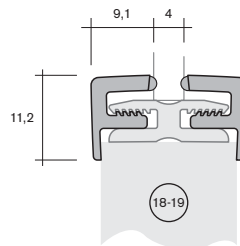
Art.-Nr.
art.-no. Material
material

Glasrahmensystem 14.8370
glass frame system 14.8370



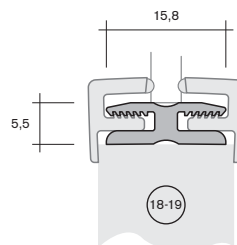
14.8370

Oberprofil für Glasrahmen
upper profile for glass frames
PS/TPE



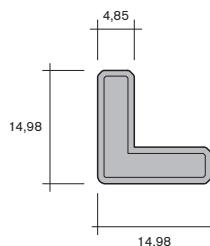
14.8390

Unterprofil für Glasrahmen
bottom profile for glass frames
PVC-P



05.7070

Schweißwinkel
welding angle
PS

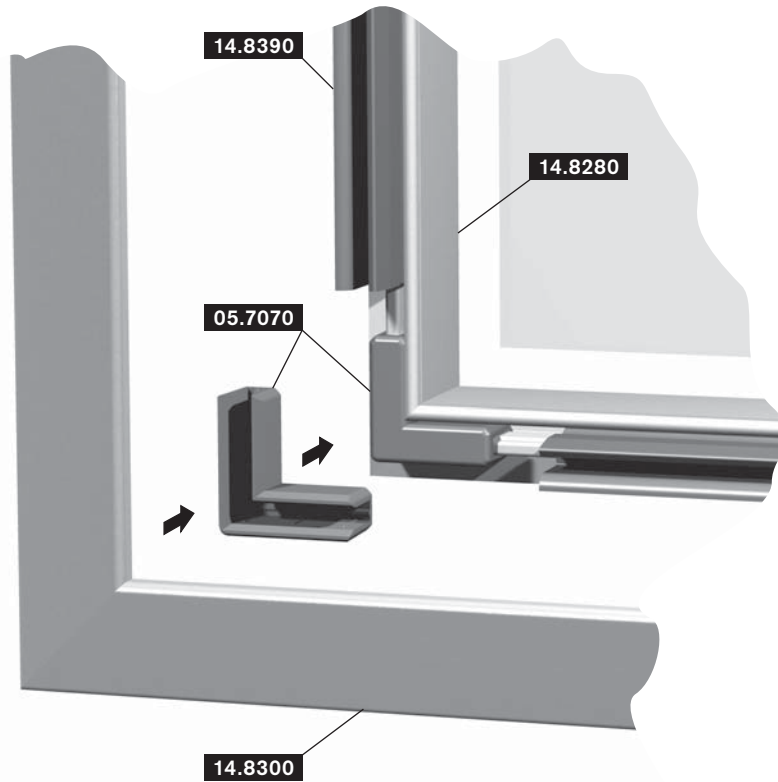


Rahmenprofile

frame profiles

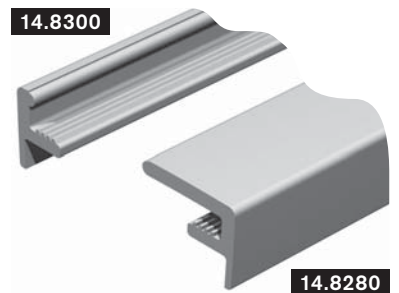
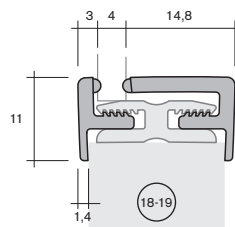
Art.-Nr.
art.-no. Material
material

Glasrahmensystem 14.8300 glass frame system 14.8300

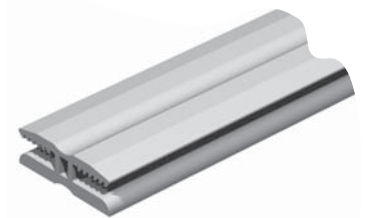
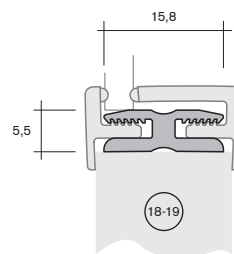


14.8300 **Oberprofil außen für Glasrahmen**
upper profile outside for glass frames
PS/TPE

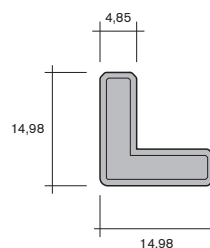
14.8280 **Oberprofil innen für Glasrahmen**
upper profile inside for glass frames
PS/TPE



14.8390 **Unterprofil für Glasrahmen**
bottom profile for glass frames
PVC-P



05.7070 **Schweißwinkel**
welding angle
PS

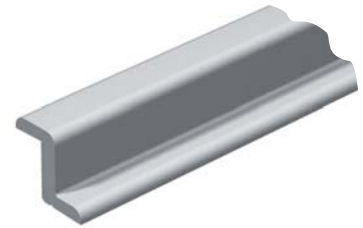
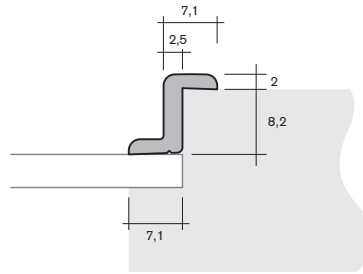


Rahmenprofile

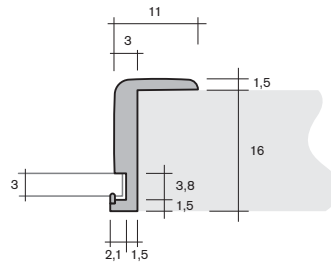
frame profiles

Art.-Nr.
art.-no. Material
material

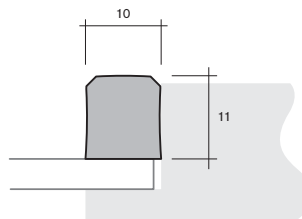
20.9210 **Glashalteprofil**
glazing bead
ABS



20.7470 **Glasrahmenprofil mit Nut**
glass frame profile with nut
PS/TPE



20.7060 **Vierkantprofil**
square profile
PS/Raplan



60.5110 **Eckverbinder 8,9 x 8,9 x 20,8**
connecting edge 8.9 x 8.9 x 20.8
ABS

