

1.2 Kantenprofile



Kantenprofile ohne Fräsnase

edge profiles without milling nose



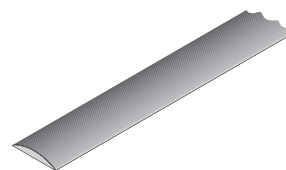
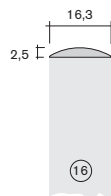
Art.-Nr. Material
art.-no. material

13.1050

Kantenprofil 16,3 x 2,5
edge profile 16.3 x 2.5

PS

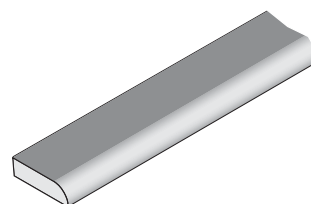
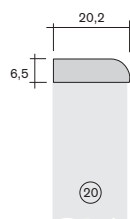
Rolle mit/ohne Schmelzkleber
oder als Stangenware
*reel with/without hot-melt glue
or as bar goods*



13.5490

Kantenprofil 20,2 x 6,5
edge profile 20.2 x 6.5

PS

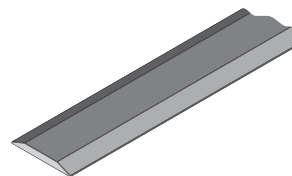
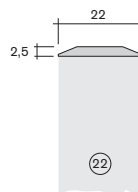


13.4810

Kantenprofil 22 x 2,5
edge profile 22 x 2.5

PS

Rolle mit/ohne Schmelzkleber
oder als Stangenware
*reel with/without hot-melt glue
or as bar goods*

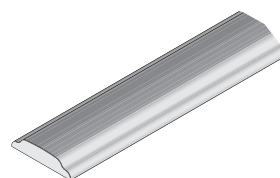
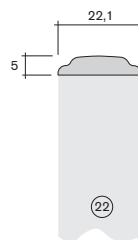


20.0550

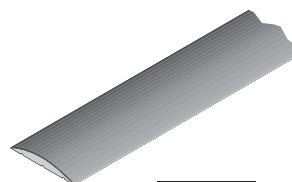
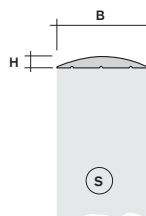
Kantenprofil 22,1 x 5
edge profile 22.1 x 5

PS

Rolle mit/ohne Schmelzkleber
oder als Stangenware
*reel with/without hot-melt glue
or as bar goods*



Kantenprofil
edge profile
PS



14.1580

	Breite B (mm) <i>width B (mm)</i>	Höhe H (mm) <i>height H (mm)</i>	Plattendicke S (mm) <i>shelf-thickness S (mm)</i>
14.2560	17,0	3,1	15
14.1540	18,0	3,2	16-18
14.1560	21,0	3,1	20
14.1580	24,0	3,1	24
14.8800	26,0	1,5	22-25

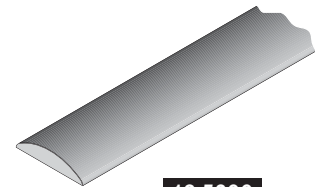
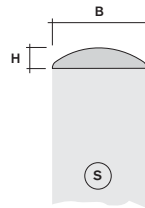
Kantenprofile ohne Fräsnase

edge profiles without milling nose



Art.-Nr.
art.-no. Material
material

Kantenprofil
edge profile
PS



	Breite B (mm) width B (mm)	Höhe H (mm) height H (mm)	Plattendicke S (mm) shelf-thickness S (mm)
13.2050	14,8	3,0	14
13.0970	19,2	2,8	19
13.1650	22,0	4,5	22
13.5200	25,0	5,5	25
13.2350	28,5	5,5	28

Kantenprofile mit Fräsnase

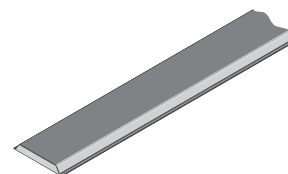
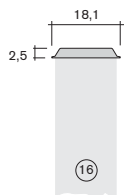
edge profiles with milling nose

Art.-Nr. Material
art.-no. material

13.8620

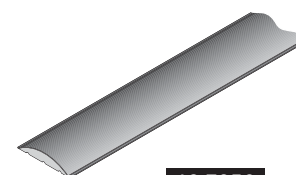
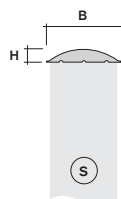
Kantenprofil 18,1 x 2,5
edge profile 18.1 x 2.5
PS

Rolle mit/ohne Schmelzkleber
oder als Stangenware
*reel with/without hot-melt glue
or as bar goods*



Kantenprofil
edge profile
PS

Rolle mit/ohne Schmelzkleber
oder als Stangenware
*reel with/without hot-melt glue
or as bar goods*



13.7250

13.7440

Breite B (mm)
width B (mm)

Höhe H (mm)
height H (mm)

Plattendicke S (mm)
shelf-thickness S (mm)

18,0

2,7

16

13.7250

19,8

3,5

18-19

13.7080

21,0

3,5

19-20

13.7460

23,8

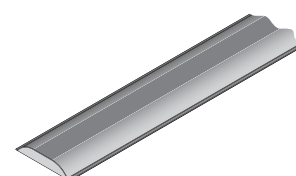
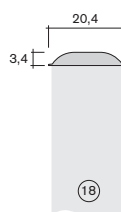
4,5

22

13.9540

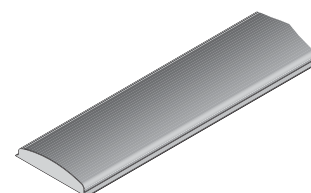
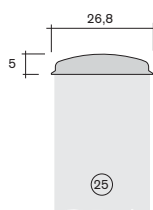
Kantenprofil 20,4 x 3,4
edge profile 20.4 x 3.4
PS

Rolle mit/ohne Schmelzkleber
oder als Stangenware
*reel with/without hot-melt glue
or as bar goods*



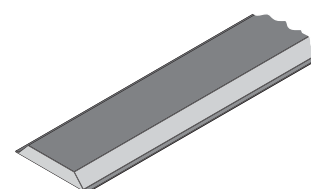
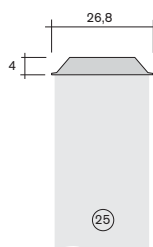
14.0060

Kantenprofil 26,8 x 5
edge profile 26.8 x 5
PS



13.9220

Kantenprofil 26,8 x 4
edge profile 26.8 x 4
PS



Kantenprofile ohne Harpune

edge profiles without tongue

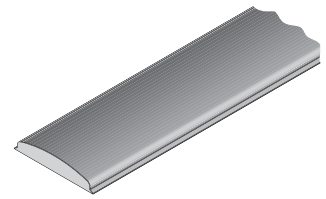
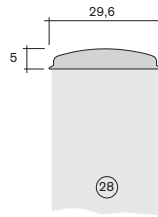


Art.-Nr.
art.-no.

Material
material

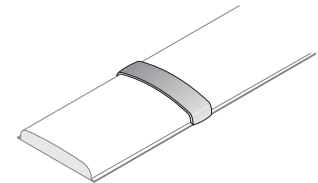
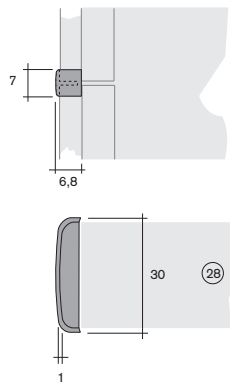
13.9920

Kantenprofil 29,6 x 5
edge profile 29.6 x 5
PS



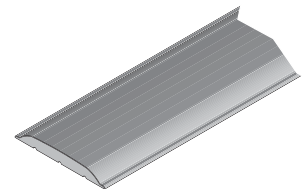
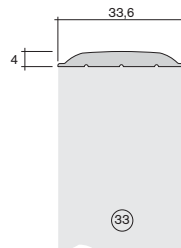
05.0740

Spange
clip
PS



14.9060

Kantenprofil 33,6 x 4
edge profile 33.6 x 4
PS

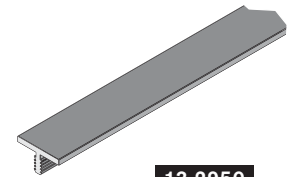
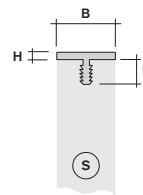


Kantenprofile Flachprofile mit Harpune

edge profiles flat profiles with tongue

Art.-Nr. Material
art.-no. material

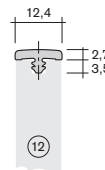
Kantenprofil mit Harpune
edge profile with tongue
PS



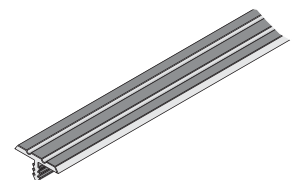
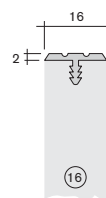
13.2950

	Breite B (mm) <i>width B (mm)</i>	Höhe H (mm) <i>height H (mm)</i>	Plattendicke S (mm) <i>shelf-thickness S (mm)</i>	Harpunenlänge L (mm) <i>harpoon-length L (mm)</i>
13.2950	15,5	2,0	15	6,5
13.2970	16,5	2,0	16	6,5
14.8590	22,0	2,5	22	9,0
14.9730	22,4	2,1	22	8,0

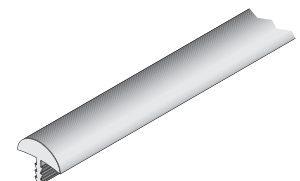
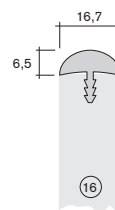
20.7320 **Kantenprofil 12,4 x 2,7 mit Harpune**
edge profile 12,4 x 2,7 with tongue
TPU



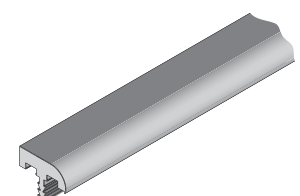
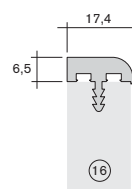
13.5780 **Kantenprofil 16 x 2 mit Rillen und Harpune**
edge profile 16 x 2 with grooves and tongue
PS



13.4150 **Kantenprofil 16,7 x 6,5 mit Harpune**
edge profile 16,7 x 6,5 with tongue
PS



13.8320 **Kantenprofil 17,4 x 6,5 mit Harpune**
edge profile 17,4 x 6,5 with tongue
PS



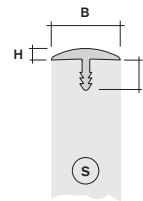
Kantenprofile Flachprofile mit Harpune

edge profiles flat profiles with tongue



Art.-Nr.
art.-no. Material
material

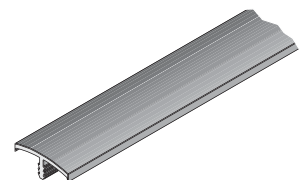
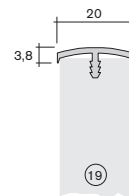
Kantenprofil mit Harpune
edge profile with tongue
PS



13.7260

	Breite B (mm) width B (mm)	Höhe H (mm) height H (mm)	Plattendicke S (mm) shelf-thickness S (mm)	Harpunenlänge L (mm) harpoon-length L (mm)
13.2550	14,8	3,0	15	6,5
13.4980	16,2	2,5	16	5,5
13.1010	16,3	2,5	16	6,0
13.7260	18,2	3,0	18	8,0
14.8660	18,3	3,2	18	8,0
13.8480	18,8	2,8	19	7,5
13.0930	19,2	2,8	19	6,0
13.7600	19,2	2,8	19	8,0
13.4730	20,0	3,0	20	8,0
13.3400	22,3	7,0	22	6,0
13.4940	22,4	5,0	22	6,0
13.3100	23,0	4,8	22	6,0
13.3150	25,0	5,4	25	6,0
13.4100	25,0	6,5	25	6,0
13.2400	28,5	5,5	28	6,0

13.5380 **Kantenprofil 20 x 3,8 mit Harpune**
edge profile 20 x 3.8 with tongue
PS



Kantenprofile Flachprofile mit Harpune

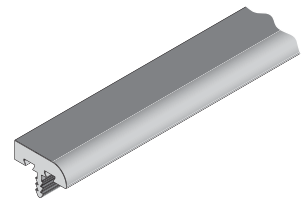
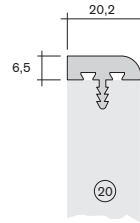
edge profiles flat profiles with tongue



Art.-Nr. Material
art.-no. material

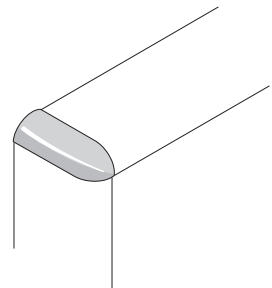
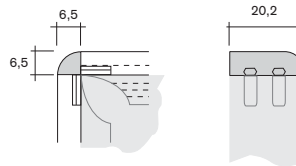
13.5540

Kantenprofil 20,2 x 6,5 mit Harpune
edge profile 20.2 x 6.5 with tongue
PS



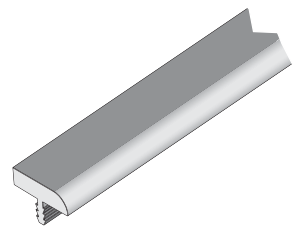
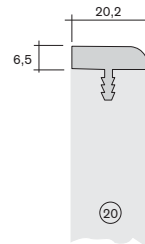
05.0285

Ecke
corner element
PS



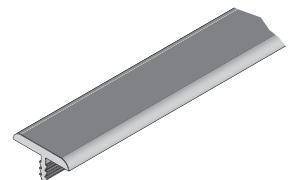
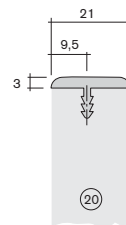
13.5480

Kantenprofil 20,2 x 6,5 mit Harpune
edge profile 20.2 x 6.5 with tongue
PS



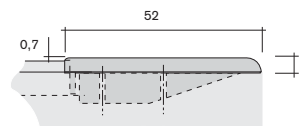
13.9420

Kantenprofil 21 x 3 mit Harpune
edge profile 21 x 3 with tongue
PS



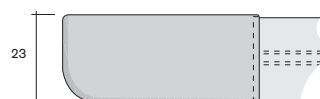
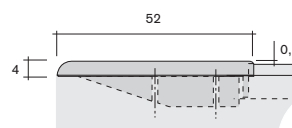
53.0770

Postforming Seitenteil rechts
right postforming side
PS



53.0780

Postforming Seitenteil links
left postforming side
PS



Kantenprofile Flachprofile mit Harpune

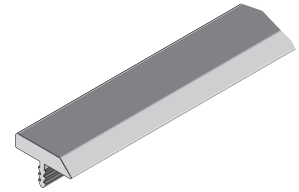
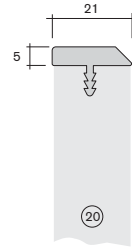
edge profiles flat profiles with tongue



Art.-Nr.
art.-no. Material
material

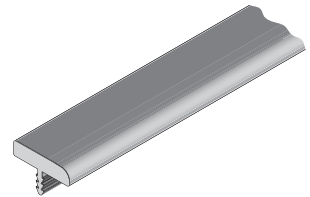
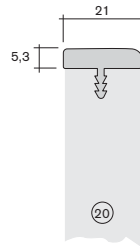
14.5320

Kantenprofil 21 x 5 mit Harpune
edge profile 21 x 5 with tongue
ABS



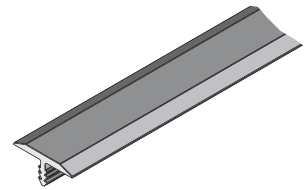
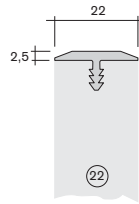
13.7660

Kantenprofil 21 x 5,3 mit Harpune
edge profile 21 x 5.3 with tongue
ABS

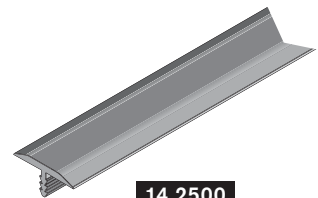
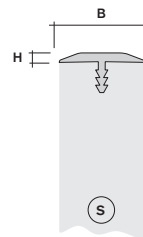


13.4815

Kantenprofil 22 x 2,5 mit Harpune
edge profile 22 x 2.5 with tongue
PS



Kantenprofil mit Harpune
edge profile with tongue
PS



14.2500

	Breite B (mm) width B (mm)	Höhe H (mm) height H (mm)	Plattendicke S (mm) shelf-thickness S (mm)
14.2480	19,5	2,7	19
14.2500	22,5	2,7	22

14.2480

19,5

2,7

19

14.2500

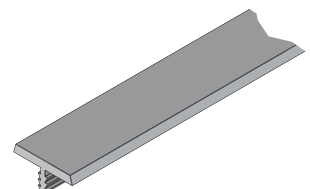
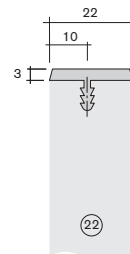
22,5

2,7

22

13.8920

Kantenprofil 22 x 3 mit Harpune
edge profile 22 x 3 with tongue
ABS



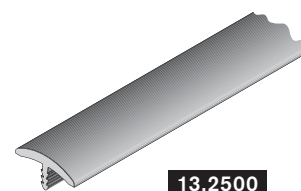
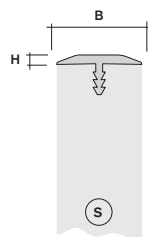
Kantenprofile Flachprofile mit Harpune

edge profiles flat profiles with tongue



Art.-Nr. Material
art.-no. material

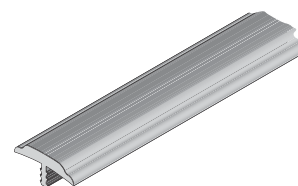
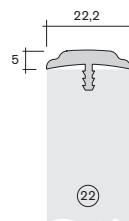
Kantenprofil mit Harpune
edge profile with tongue
PS



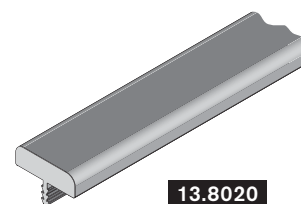
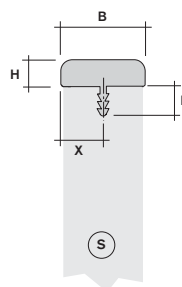
13.2500

	Breite B (mm) width B (mm)	Höhe H (mm) height H (mm)	Plattendicke S (mm) shelf-thickness S (mm)	Harpunenlänge L (mm) harpoon-length L (mm)
13.0990	16,0	4,5	16	7,0
13.0950	19,0	4,8	19	7,0
13.2500	22,5	5,0	22	7,0
13.4750	24,0	4,5	24	7,0

20.0300 **Kantenprofil 22,2 x 5 mit Harpune**
edge profile 22.2 x 5 with tongue
PS



Kantenprofil
edge profile
ABS



13.8020

	Breite B (mm) width B (mm)	Höhe H (mm) height H (mm)	Plattendicke S (mm) shelf-thickness S (mm)	Harpunenlänge L (mm) harpoon-length L (mm)	Abstand X (mm) distance X (mm)
13.9340	18,9	4,0	18	8,0	8,3
13.8160	19,4	6,0	19	8,0	8,4
20.6980	19,8	2,0	19	6,5	9,9
13.9360	20,5	10,0	20	8,0	9,5
13.9420	21,0	3,0	20	8,0	10,0
13.7520	22,0	3,0	20	8,0	10,0
13.8340	22,0	4,0	20	8,0	10,0
13.8020	22,4	7,0	22	8,0	11,2
20.6990	22,8	2,0	22	6,5	11,4

Kantenprofile Flachprofile mit Harpune

edge profiles flat profiles with tongue



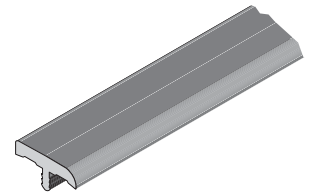
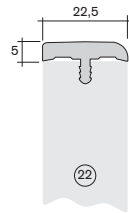
Art.-Nr.
art.-no.

Material
material

14.2940

Kantenprofil 22,5 x 5 mit Harpune
edge profile 22.5 x 5 with tongue

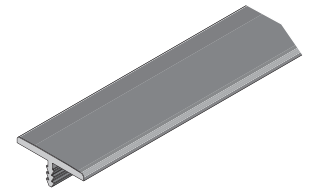
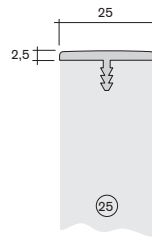
PS weich/soft



14.2720

Kantenprofil 25 x 2,5 mit Harpune
edge profile 25 x 2.5 with tongue

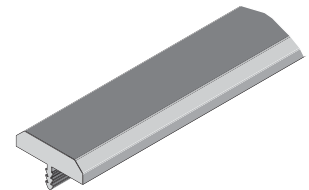
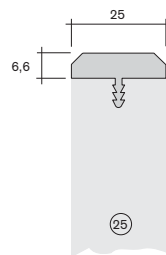
PS



14.1060

Kantenprofil 25 x 6,6 mit Harpune
edge profile 25 x 6.6 with tongue

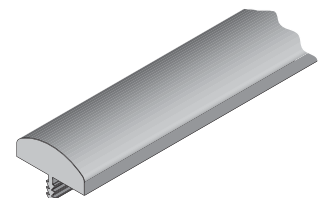
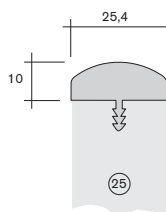
PS



13.9720

Kantenprofil 25,4 x 10 mit Harpune
edge profile 25.4 x 10 with tongue

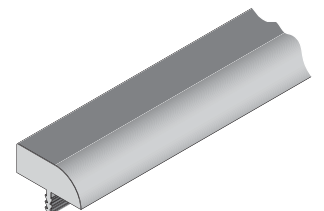
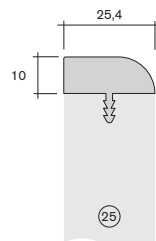
PS



13.9740

Kantenprofil 25,4 x 10 mit Harpune
edge profile 25.4 x 10 with tongue

PS

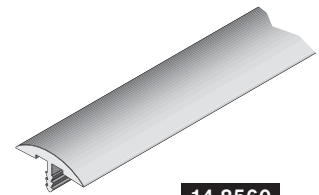
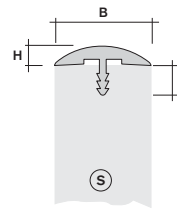


Kantenprofile Flachprofile mit Harpune

edge profiles flat profiles with tongue

Art.-Nr. Material
art.-no. material

Kantenprofil mit Harpune
edge profile with tongue
PS

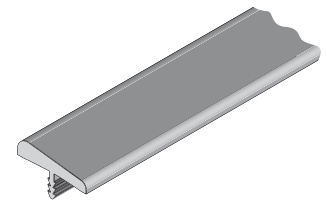
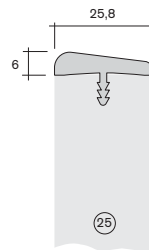


14.8560

	Breite B (mm) width B (mm)	Höhe H (mm) height H (mm)	Plattendicke S (mm) shelf-thickness S (mm)	Harpunenlänge L (mm) harpoon-length L (mm)
14.8540	19,5	5,0	19	8,0
14.8560	25,5	5,2	25	8,0

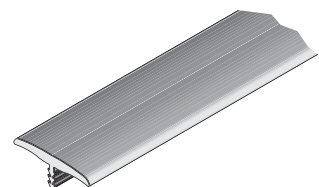
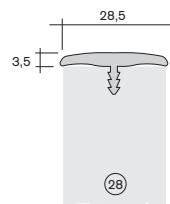
13.8880

Kantenprofil 25,8 x 6 mit Harpune
edge profile 25.8 x 6 with tongue
PS



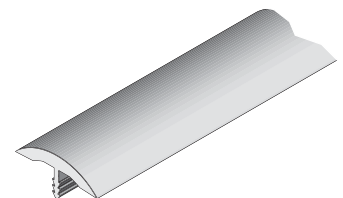
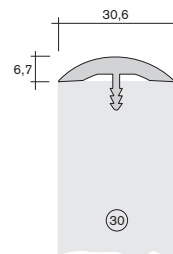
13.5680

Kantenprofil 28,5 x 3,5 mit Harpune
edge profile 28.5 x 3.5 with tongue
PS



14.1340

Kantenprofil 30,6 x 6,7 mit Harpune
edge profile 30.6 x 6.7 with tongue
PS



Kantenprofile mit vorderer Kante und Harpune

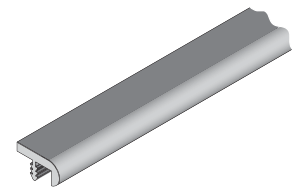
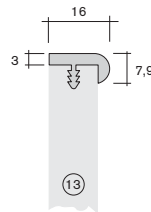
edge profiles with front edge and tongue



Art.-Nr.
art.-no. Material
material

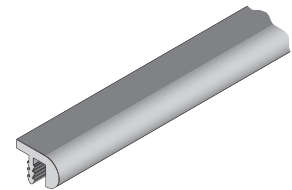
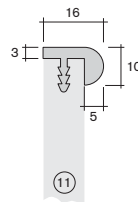
13.7500

Kantenprofil 16 x 7,9 mit Harpune
edge profile 16 x 7.9 with tongue
PS



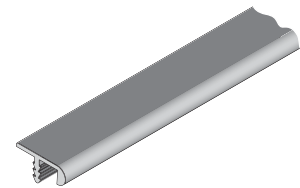
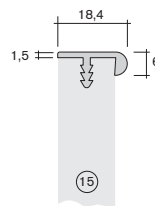
13.9880

Kantenprofil 16 x 10 mit Harpune
edge profile 16 x 10 with tongue
PS



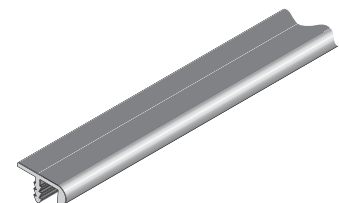
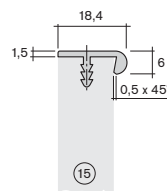
13.9660

Kantenprofil 18,4 x 6 mit Harpune
edge profile 18.4 x 6 with tongue
PS



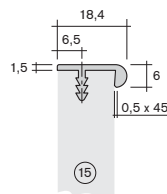
13.9670

Kantenprofil 18,4 x 6 mit Fase und Harpune
edge profile 18.4 x 6 with bevel and tongue
PS



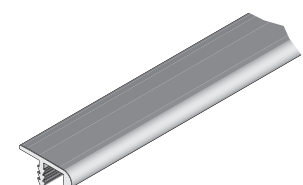
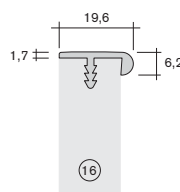
14.8410

Kantenprofil 18,4 x 6 mit Fase und Harpune
edge profile 18.4 x 6 with bevel and tongue
PS



15.6670

Kantenprofil 19,6 x 6,2 mit Harpune
edge profile 19.6 x 6.2 with tongue
PS

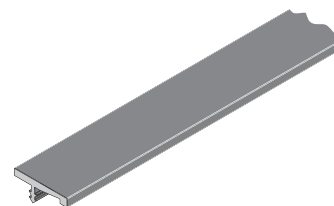
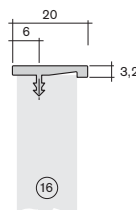


Kantenprofile mit vorderer Kante und Harpune edge profiles with front edge and harpune

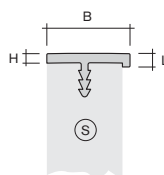
Art.-Nr. Material
art.-no. material

14.9480

Kantenprofil 20 x 3,2 mit Harpune
edge profile 20 x 3.2 with tongue
PVC



Kantenprofil mit Harpune
edge profile with tongue
PS



14.9170

14.9110

Breite B (mm)
width B (mm)

Höhe H (mm)
height H (mm)

Plattendicke S (mm)
shelf-thickness S (mm)

Kantenlänge L (mm)
front edge length L (mm)

14.9170

14.8970

19,2

1,8

16

2,6

22

2,5

20

3,5

25

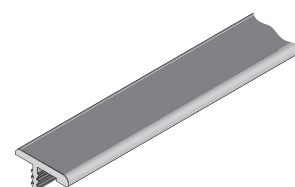
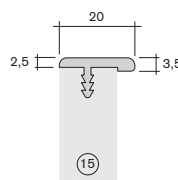
2,5

23

3,5

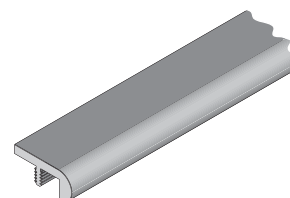
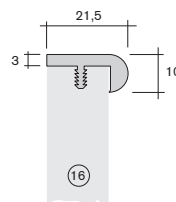
13.8800

Kantenprofil 20 x 3,5 mit Harpune
edge profile 20 x 3.5 with tongue
PS



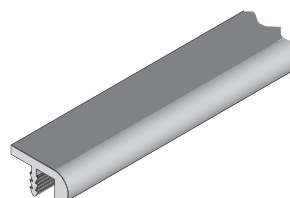
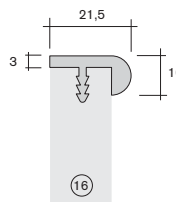
13.4010

Kantenprofil 21,5 x 10 mit Harpune und Nase
edge profile 21.5 x 10 with tongue and nose
PS



13.4000

Kantenprofil 21,5 x 10 mit Harpune
edge profile 21.5 x 10 with tongue
PS



Kantenprofile mit vorderer Kante und Harpune

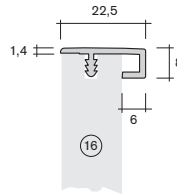
edge profiles with front edge and tongue



Art.-Nr.
art.-no. Material
material

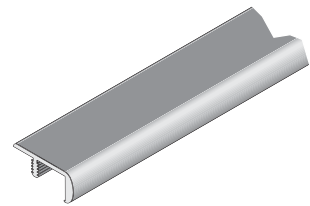
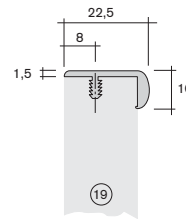
14.8790

Kantenprofil 22,5 x 8
edge profile 22.5 x 8
PS



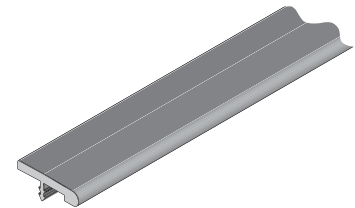
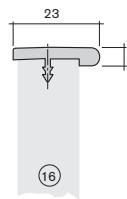
13.5360

Kantenprofil 22,5 x 10 mit Harpune 6 mm
edge profile 22.5 x 10 with tongue 6 mm
PS



13.5370

Kantenprofil 22,5 x 10 mit Harpune 4,5 mm
edge profile 22.5 x 10 with tongue 4.5 mm
PS

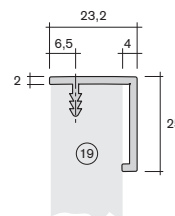


14.9220

Kantenprofil 23 x 5 mit Harpune
edge profile 23 x 5 with tongue
PVC

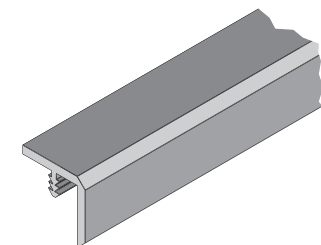
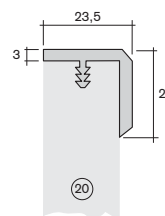
14.9630

Kantenprofil 23,2 x 25 mit Harpune
edge profile 23.2 x 25 with tongue
PS



13.9040

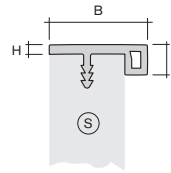
Kantenprofil 23,5 x 23 mit Harpune
edge profile 23.5 x 23 with tongue
ABS



Kantenprofile mit vorderer Kante und Harpune edge profiles with front edge and tongue

Art.-Nr. Material
art.-no. material

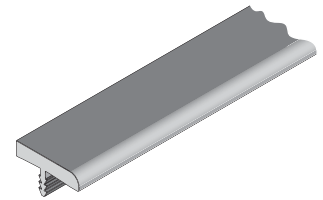
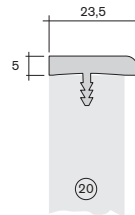
Kantenprofil mit Harpune
edge profile with tongue
PS



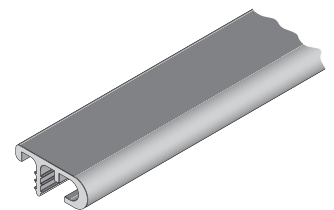
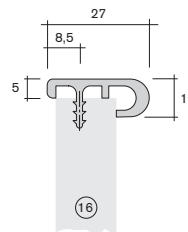
14.91750

	Breite B (mm) <i>width B (mm)</i>	Höhe H (mm) <i>height H (mm)</i>	Plattendicke S (mm) <i>shelf-thickness S (mm)</i>	Kantenlänge L (mm) <i>front edge length L (mm)</i>
14.9150	26	2,5	20	8
14.8990	30	2,5	23	8

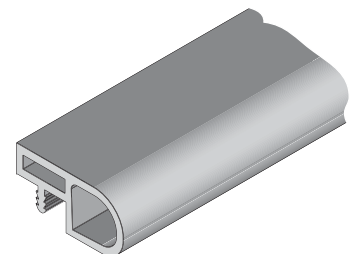
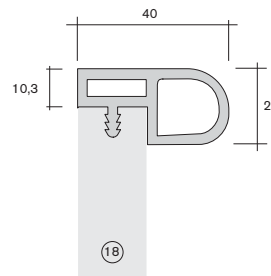
13.4200 **Kantenprofil 23,5 x 5 mit Harpune**
edge profile 23.5 x 5 with tongue
ABS



13.1350 **Kantenprofil 27 x 10 mit Harpune**
edge profile 27 x 10 with tongue
PS



15.1060 **Kantenprofil 40 x 20 mit Harpune**
edge profile 40 x 20 with tongue
PS



Kantenprofile mit vorderer Kante und Harpune

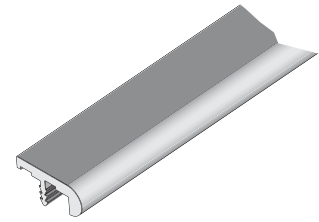
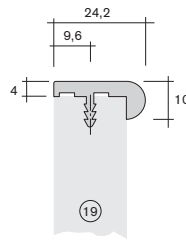
edge profiles with front edge and harpoon



Art.-Nr.
art.-no. Material
material

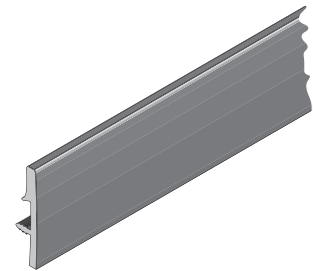
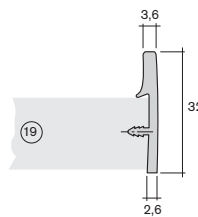
13.4880

Kantenprofil 24,2 x 10 mit Harpune
edge profile 24.2 x 10 with tongue
PS



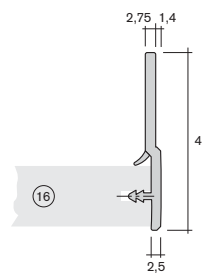
14.9620

Kantenprofil mit Reling 32 x 3,6
edge profile with guardrail 32 x 3.6
PS



20.8720

Kantenprofil mit Reling 47 x 4,15
edge profile with guardrail 47 x 4.15
PVC hart/weich
PVC hard/soft



Kantenprofile mit vorderer Kante ohne Harpune

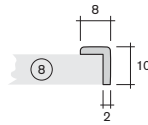
edge profiles with front edge without tongue



Art.-Nr.
art.-no. Material
material

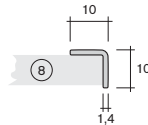
20.9370

Winkelprofil 8 x 10
angle profile 8 x 10
ABS



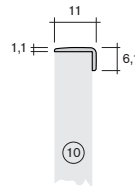
20.7310

Winkelprofil 10 x 10
angle profile 10 x 10
PS



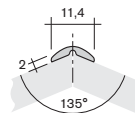
14.9750

Kantenprofil 11 x 6,1
edge profile 11 x 6.1
PS



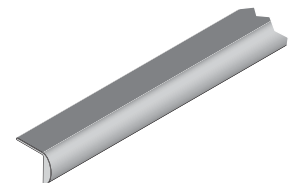
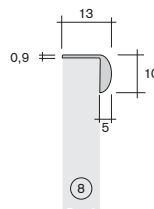
14.8290

Kantenprofil 45°, 11,4 x 4,1
edge profile 45°, 11.4 x 4.1
PS



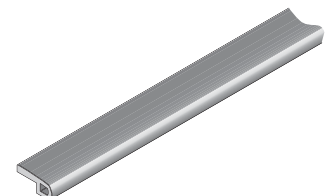
14.5560

Kantenprofil 13 x 10
edge profile 13 x 10
PS



15.7780

Kantenprofil 13,5 x 6
edge profile 13.5 x 6
PS



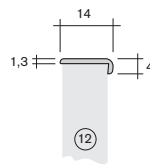
Kantenprofile mit vorderer Kante ohne Harpune

edge profiles with front edge without tongue

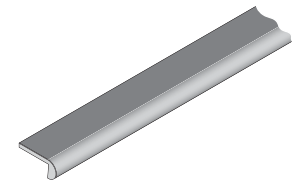
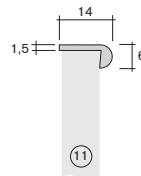


Art.-Nr.
art.-no. Material
material

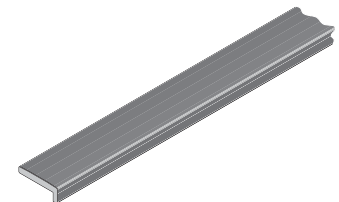
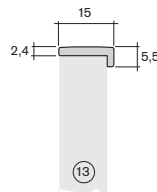
14.8270 **Kantenprofil 14 x 4**
edge profile 14 x 4
PS



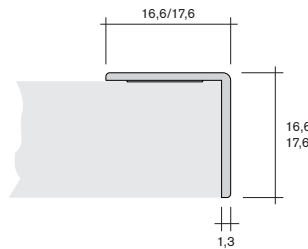
13.9440 **Kantenprofil 14 x 6**
edge profile 14 x 6
PS



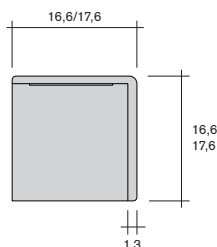
14.9860 **Kantenprofil 15 x 5,5**
edge profile 15 x 5.5
PS



14.9530 **Winkelprofil 16,6 x 16,6**
angle profile 16.6 x 16.6
PS

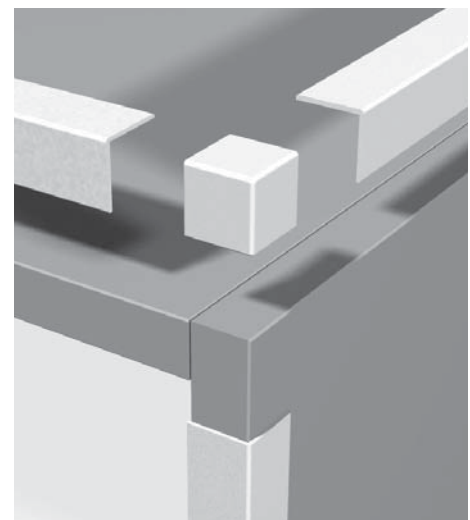


14.9030 **Winkelprofil 17,6 x 17,6**
angle profile 17.6 x 17.6
PS

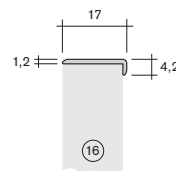


05.6890 **Dekorecke 16,6 x 16,6**
decorative corner element 16.6 x 16.6
PS

05.6970 **Dekorecke 17,6 x 17,6**
decorative corner element 17.6 x 17.6
PS



14.8250 **Kantenprofil 17 x 4,2**
edge profile 17 x 4.2
PS



Kantenprofile mit vorderer Kante ohne Harpune

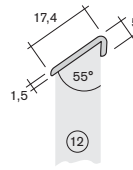
edge profiles with front edge without tongue



Art.-Nr. Material
art.-no. material

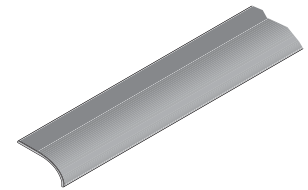
14.8230

Kantenprofil 55°, 17,4 x 5
edge profile 55°, 17.4 x 5
PS



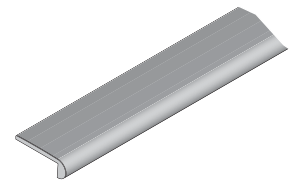
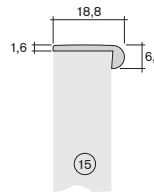
14.2340

Kantenprofil 17,4 x 6,9
für 16er Seite
edge profile 17.4 x 6.9
for 16er board
PS



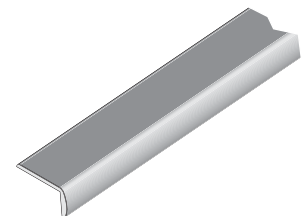
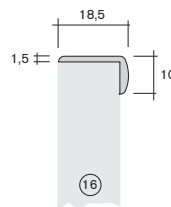
14.1920

Kantenprofil 18,8 x 6,1
edge profile 18.8 x 6.1
PS



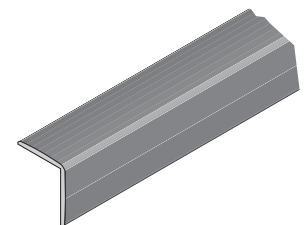
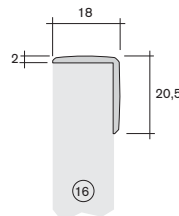
13.1090

Kantenprofil 18,5 x 10
edge profile 18.5 x 10
PS



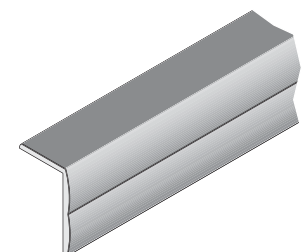
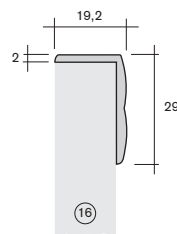
14.9120

Kantenprofil 18 x 20,5
edge profile 18 x 20.5
PS



14.1400

Kantenprofil 19,2 x 29
edge profile 19.2 x 29
PS



Kantenprofile mit vorderer Kante ohne Harpune

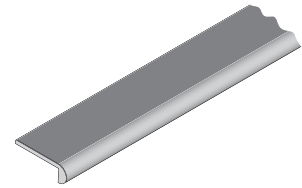
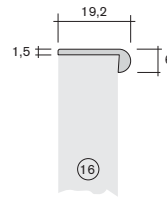
edge profiles with front edge without tongue



Art.-Nr.
art.-no. Material
material

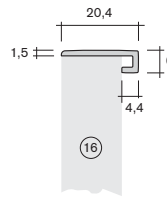
13.5140

Kantenprofil 19,2 x 6
edge profile 19,2 x 6
PS



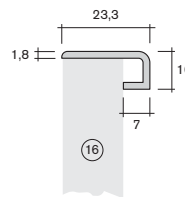
20.9350

Kantenprofil 20,4 x 6
edge profile 20,4 x 6
PS



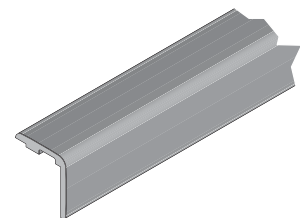
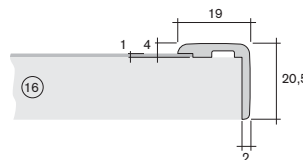
14.9010

Kantenprofil 23,3 x 10
edge profile 23,3 x 10
PS



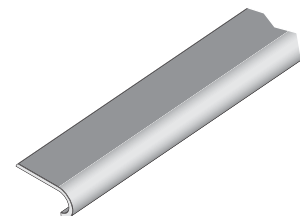
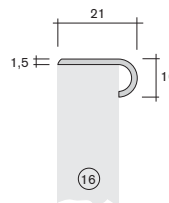
14.2240

Kantenprofil 20,5 x 19
für 16 mm Platten und Einlage
edge profile 20,5 x 19
for 16 mm shelves and layer
PS



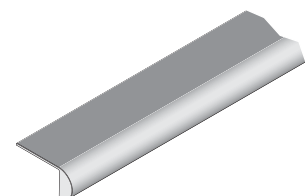
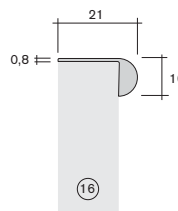
13.3600

Kantenprofil 21 x 10
edge profile 21 x 10
PS



14.5500

Kantenprofil 21 x 10
edge profile 21 x 10
ABS



Kantenprofile mit vorderer Kante ohne Harpune

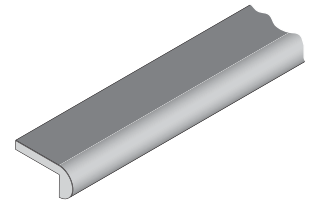
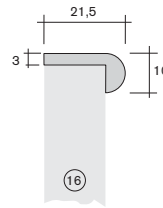
edge profiles with front edge without tongue



Art.-Nr. Material
art.-no. material

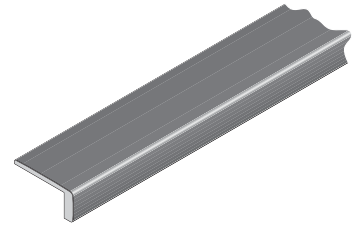
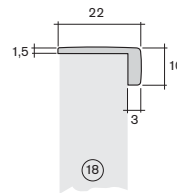
13.4660

Kantenprofil 21,5 x 10
edge profile 21.5 x 10
PS



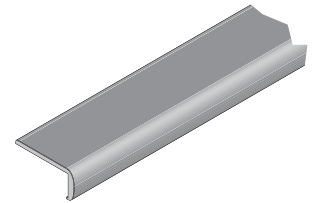
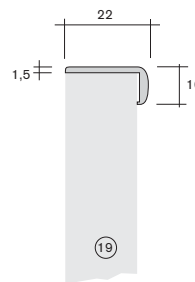
14.9740

Kantenprofil 22 x 10
edge profile 22 x 10
PS



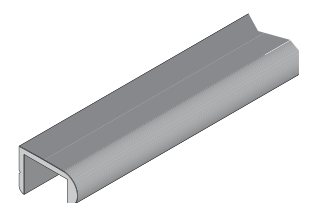
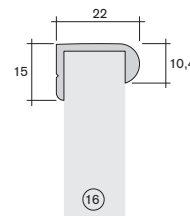
13.3200

Kantenprofil 22 x 10
edge profile 22 x 10
PS



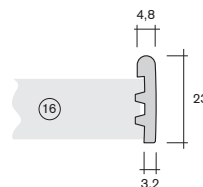
14.2840

Kantenprofil 22 x 10,4
für 16er Seite
edge profile 22 x 10.4
for 16er board
PS



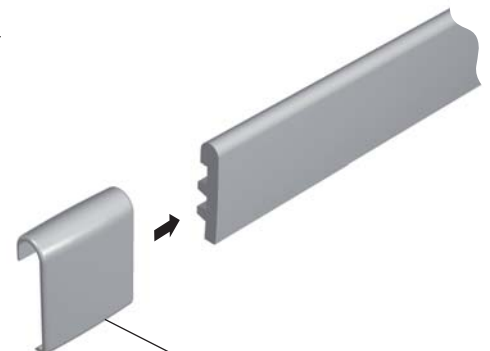
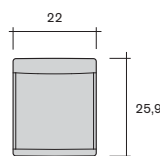
14.9970

Kantenprofil 23 x 4,5
für 16er Seite
edge profile 23 x 4.5
for 16er board
PS



60.9250

Spange 0°
clip 0°
PS



60.9250

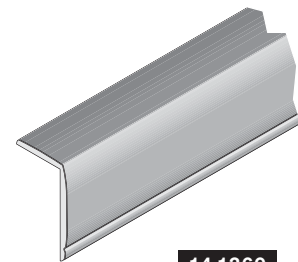
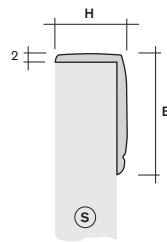
Kantenprofile mit vorderer Kante ohne Harpune

edge profiles with front edge without tongue



Art.-Nr.
art.-no. Material
material

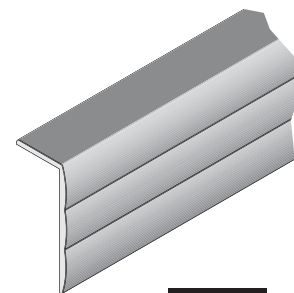
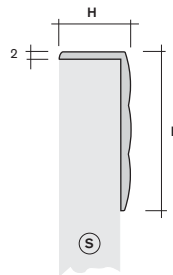
Kantenprofil
edge profile
PS



14.1360

	Breite B (mm) width B (mm)	Höhe H (mm) height H (mm)	Plattendicke S (mm) shelf-thickness S (mm)
14.1360	32	19,2	16
14.9500	32	21,2	18

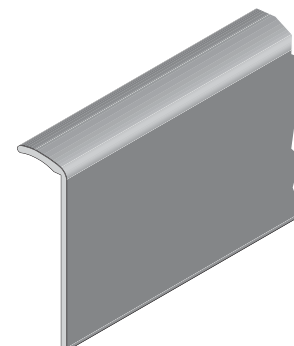
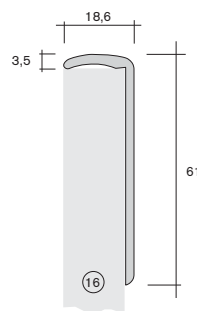
Kantenprofil
edge profile
PS



14.1380

	Breite B (mm) width B (mm)	Höhe H (mm) height H (mm)	Plattendicke S (mm) shelf-thickness S (mm)
14.1380	42	19,2	16
14.2820	42	21,4	18

13.0770 **Kantenprofil 18,6 x 61**
edge profile 18.6 x 61
PS



Kantenprofile mit vorderer Kante ohne Harpune

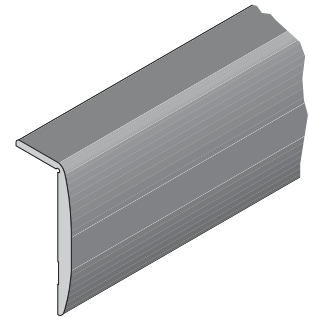
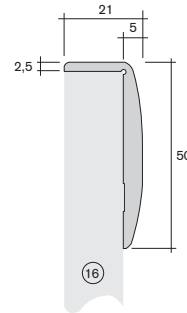
edge profiles with front edge without tongue



Art.-Nr. Material
art.-no. material

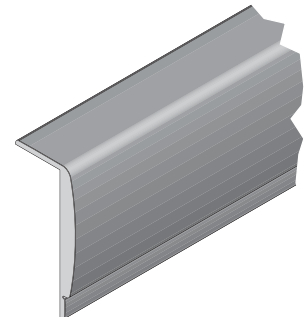
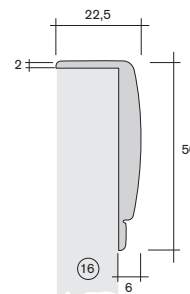
14.2960

Kantenprofil 21 x 50
edge profile 21 x 50
PS



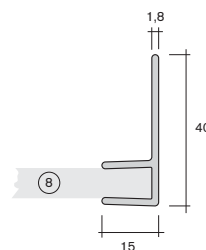
15.6490

Kantenprofil 22,5 x 50
edge profile 22.5 x 50
PS



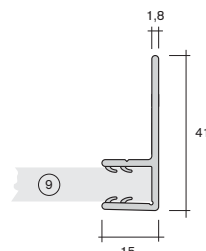
14.9350

Kantenprofil mit Reling 40 x 15
edge profile with guardrail 40 x 15
PVC-U/PVC-P



14.9250

Kantenprofil mit Reling 41 x 15
edge profile with guardrail 41 x 15
PVC-U/PVC-P



Kantenprofile als Hohlkammerprofile

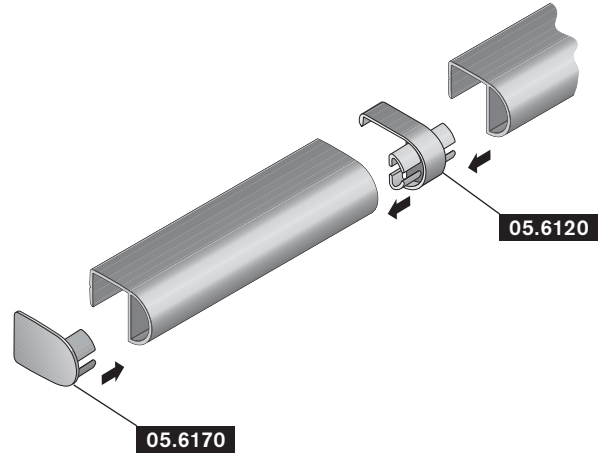
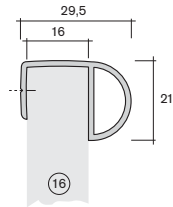
edge profiles hollow profiles



Art.-Nr.
art.-no. Material
material

15.8200

Kantenprofil 29,5 x 21
edge profile 29.5 x 21
PS

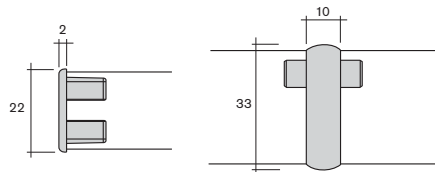


05.6120

Nullgradverbinder
zero degrees connector
PS

05.6170

Endkappe
end cap
PS

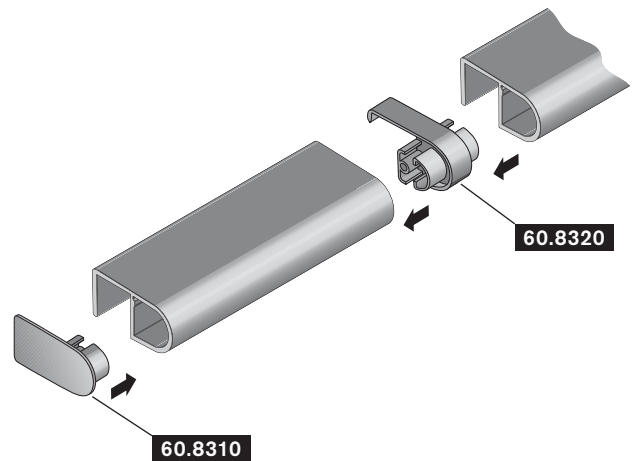
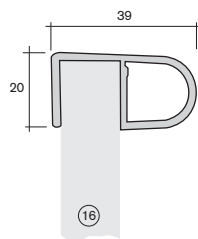


05.6170

05.6120

15.8560

Kantenprofil 39 x 20
edge profile 39 x 20
PS

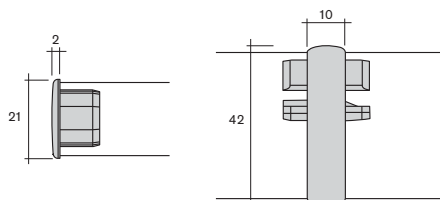


60.8320

Nullgradverbinder
zero degrees connector
PS

60.8310

Endkappe
end cap
PS



60.8310

60.8320

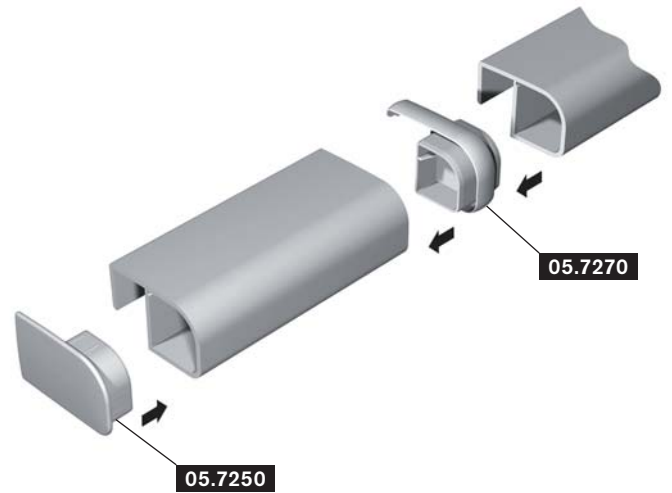
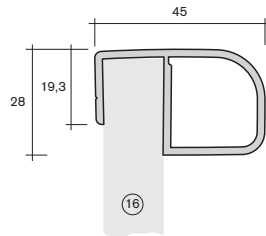
Kantenprofile als Hohlkammerprofile

edge profiles hollow profiles

Art.-Nr. Material
art.-no. material

15.9190

Kantenprofil 45 x 28
edge profile 45 x 28
PS



05.7270

Nullgradverbinder
zero degrees connector

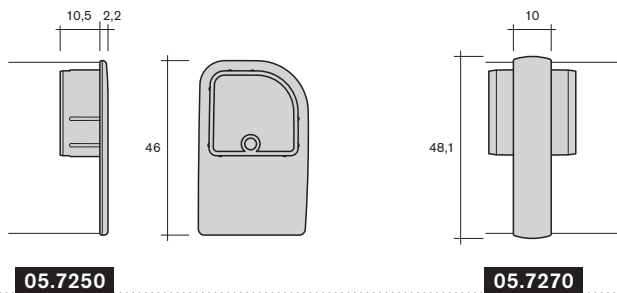
05.7250

Endkappe rechts
right end cap

05.7260

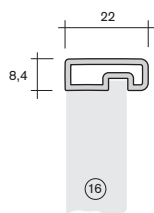
Endkappe links
left end cap

PS



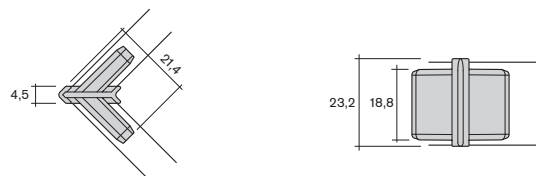
15.8880

Kantenprofil 22 x 8,4
edge profile 22 x 8.4
PS



60.9670

Spange 90°
clip 90°
PS



Kantenprofile als Hohlkammerprofile

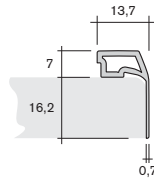
edge profiles hollow profiles



Art.-Nr.
art.-no. Material
material

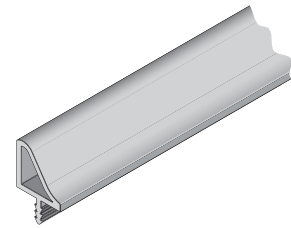
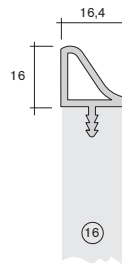
15.9100

Kantenprofil 13,7 x 23,2
edge profile 13.7 x 23.2
PS



15.0960

Kantenprofil 16,4 x 16 mit Harpune
edge profile 16.4 x 16 with tongue
PS

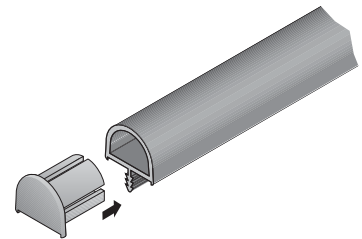
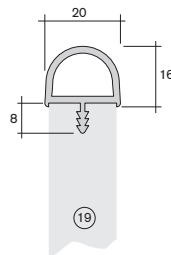


15.7240

Kantenprofil 20 x 16
edge profile 20 x 16
PS

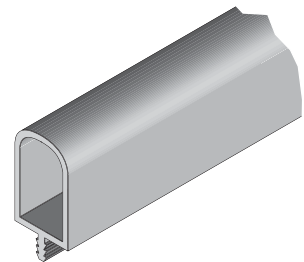
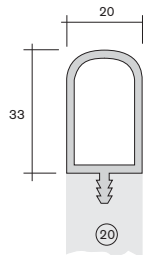
05.5300

Endkappe rechts und links
end cap right and left
PS



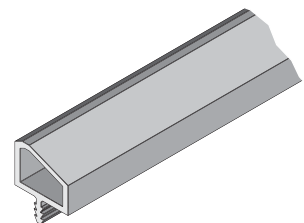
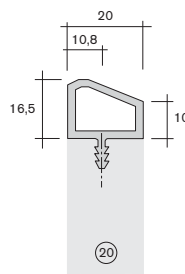
15.0860

Kantenprofil 20 x 33 mit Harpune
edge profile 20 x 33 with tongue
PS



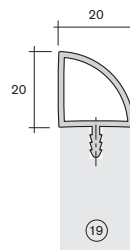
15.0900

Kantenprofil 20 x 16,5 mit Harpune
edge profile 20 x 16.5 with tongue
PS



20.7000

Kantenprofil 20 x 20 mit Harpune
edge profile 20 x 20 with tongue
PS



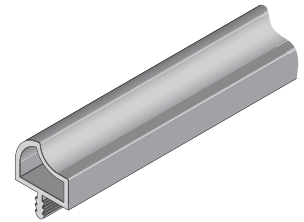
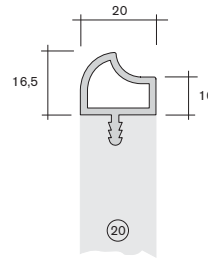
Kantenprofile als Hohlkammerprofile

edge profiles hollow profiles

Art.-Nr. Material
art.-no. material

15.0920

Kantenprofil 20 x 16,5 mit Harpune
edge profile 20 x 16.5 with tongue
PS

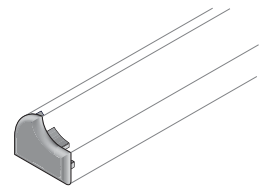
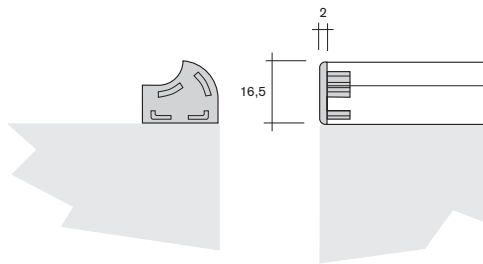


05.1790

Endkappe rechts
right end cap
PS

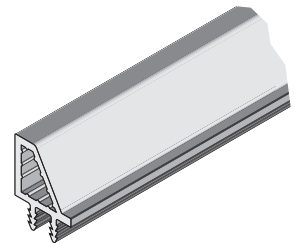
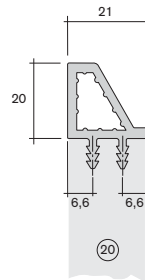
05.1780

Endkappe links
left end cap
PS



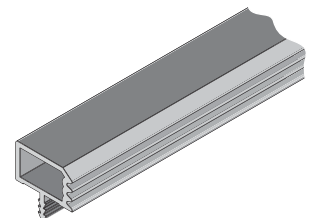
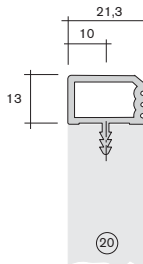
15.1020

Kantenprofil 21 x 20 mit Harpune
edge profile 21 x 20 with tongue
PS



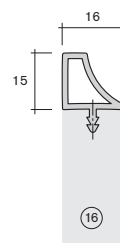
13.9520

Kantenprofil 21,3 x 13 mit Harpune
edge profile 21.3 x 13 with tongue
PS



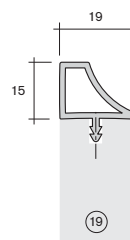
15.9020

Kantenprofil 16 x 15 mit Harpune
edge profile 16 x 15 with tongue
PS



15.9080

Kantenprofil 19 x 15 mit Harpune
edge profile 19 x 15 with tongue
PS



Kantenprofile als Hohlkammerprofile

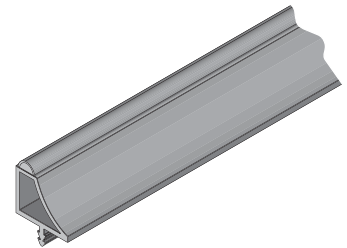
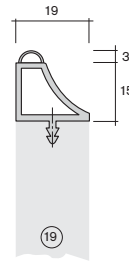
edge profiles hollow profiles



Art.-Nr.
art.-no. Material
material

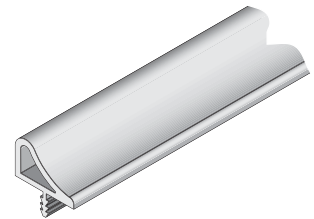
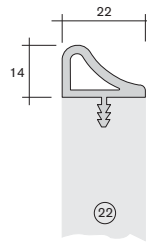
15.8500

Kantenprofil 19 x 18 mit Harpune
edge profile 19 x 18 with tongue
PVC hart/weich
PVC hard/soft



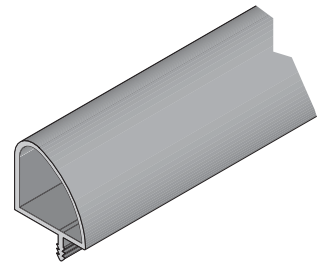
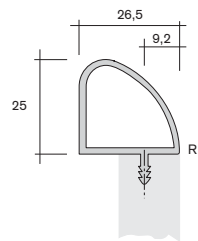
15.0800

Kantenprofil 22 x 14 mit Harpune
edge profile 22 x 14 with tongue
PS



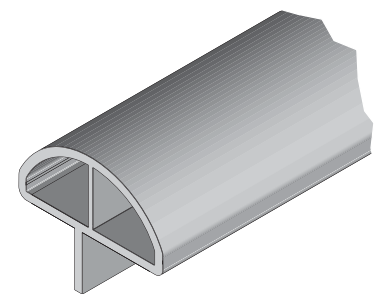
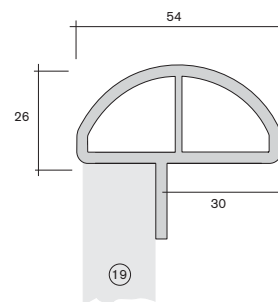
15.0980

Kantenprofil 26,5 x 25 mit Harpune
edge profile 26.5 x 25 with tongue
PS



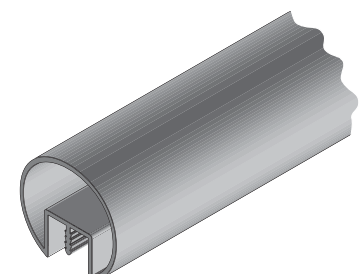
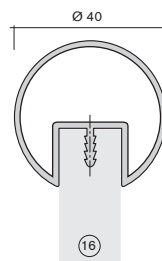
20.1680

Kantenprofil 54 x 26
edge profile 54 x 26
PS



15.8440

Kantenprofil \varnothing 40 mm
edge profile \varnothing 40 mm
PS



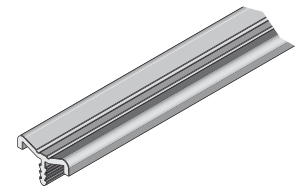
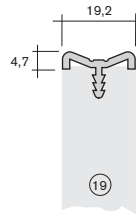
Kantenprofile als Hohlkammerprofile

edge profiles hollow profiles

Art.-Nr. Material
art.-no. material

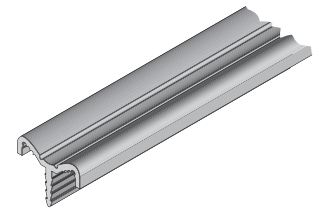
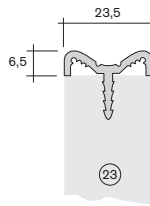
13.5580

Kantenprofil 19,2 x 4,7 mit Harpune
edge profile 19.2 x 4.7 with tongue
PS



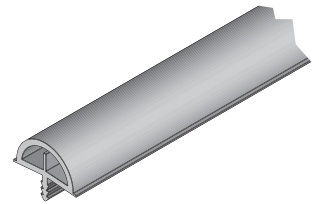
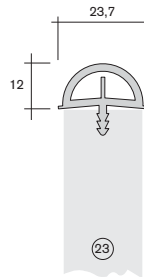
13.0300

Kantenprofil 23,5 x 6,5 mit Harpune
edge profile 23.5 x 6.5 with tongue
PS



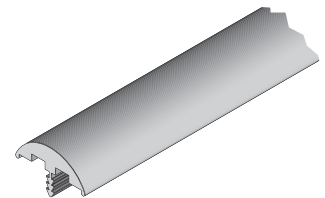
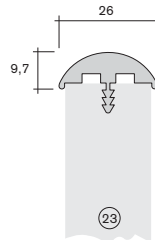
15.6880

Kantenprofil 23,7 x 12 mit Harpune
edge profile 23.7 x 12 with tongue
PVC



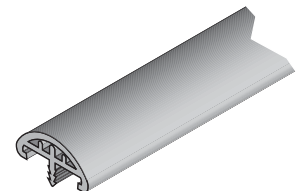
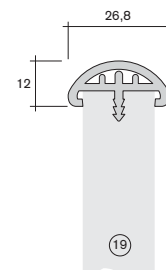
14.5580

Kantenprofil 26 x 9,7 mit Harpune
edge profile 26 x 9.7 with tongue
PS



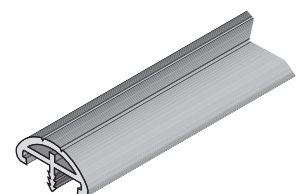
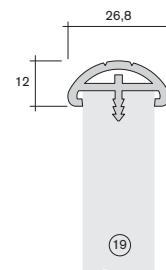
15.7220

Kantenprofil 26,8 x 12 mit Harpune
edge profile 26.8 x 12 with tongue
PS



15.7200

Kantenprofil 26,8 x 12 mit Harpune
edge profile 26.8 x 12 with tongue
PS



Kantenprofile als Hohlkammerprofile

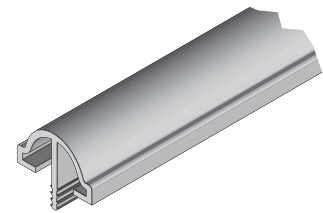
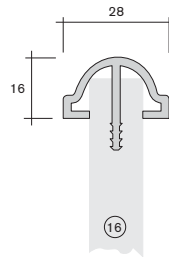
edge profiles hollow profiles



Art.-Nr.
art.-no. Material
material

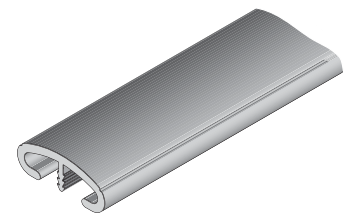
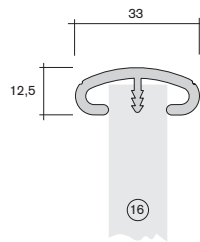
13.1850

Kantenprofil 28 x 16 mit Harpune
edge profile 28 x 16 with tongue
PS



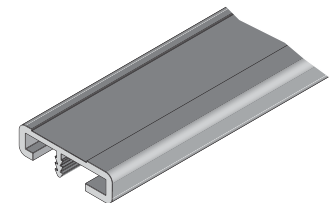
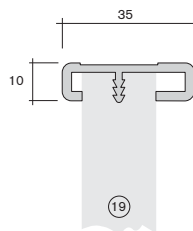
15.6180

Kantenprofil 33 x 12,5 mit Harpune
edge profile 33 x 12.5 with tongue
PS



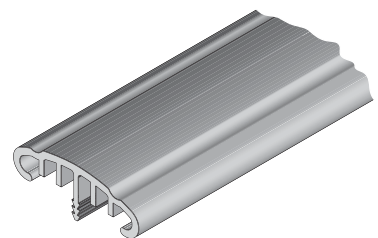
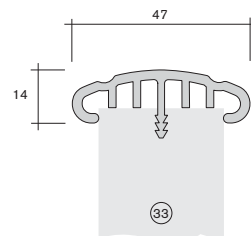
14.0200

Kantenprofil 35 x 10 mit Harpune
edge profile 35 x 10 with tongue
ABS



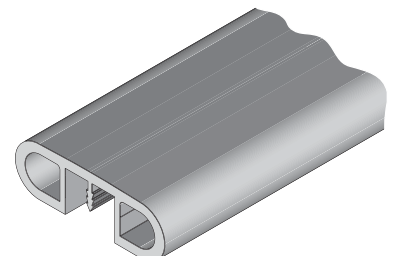
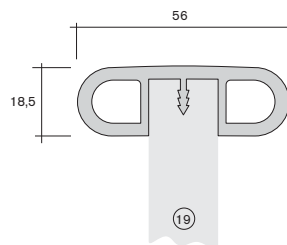
13.3950

Kantenprofil 47 x 14 mit Harpune
edge profile 47 x 14 with tongue
PS



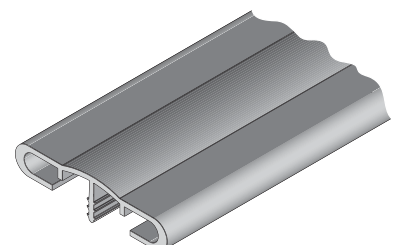
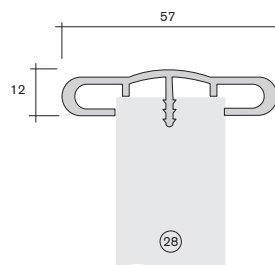
13.6000

Kantenprofil 56 x 18,5 mit Harpune
edge profile 56 x 18.5 with tongue
PS



13.1400

Kantenprofil 57 x 12 mit Harpune
edge profile 57 x 12 with tongue
PS

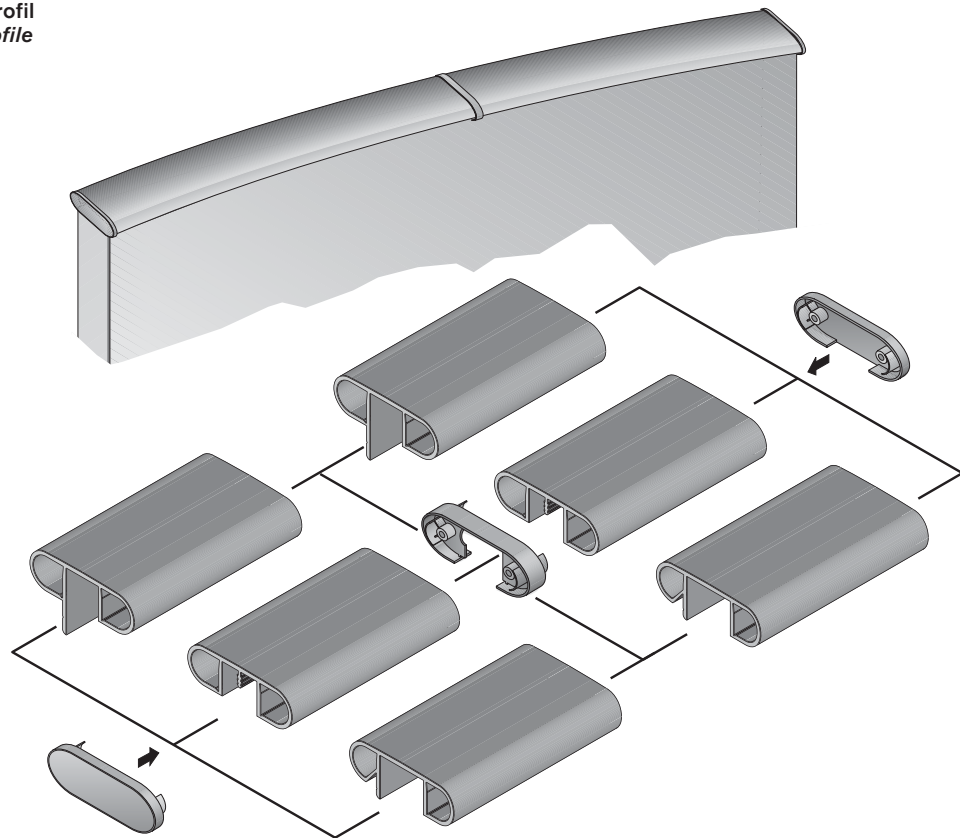


Kantenprofile als Hohlkammerprofile

edge profiles hollow profiles

Art.-Nr. Material
art.-no. material

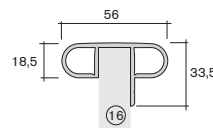
Bettseitenprofil
bed side profile



Bezeichnung/description

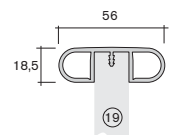
15.7520

Kantenprofil 56 x 33,5
edge profile 56 x 33.5
PS



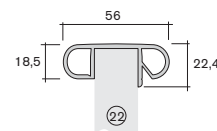
13.6010

Kantenprofil 56 x 18,5
edge profile 56 x 18.5
PS



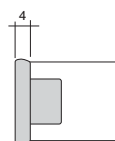
15.7720

Kantenprofil 56 x 22,4
edge profile 56 x 22.4
PS



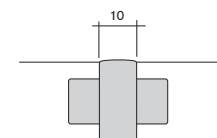
05.5480

Endkappe
end cap
PS



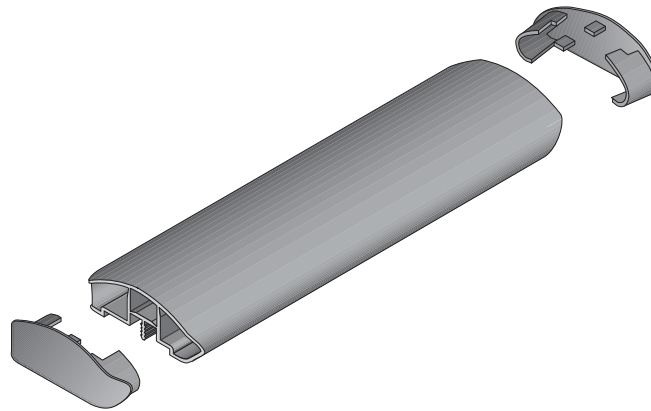
05.5490

0° Spange
0° clip
PS



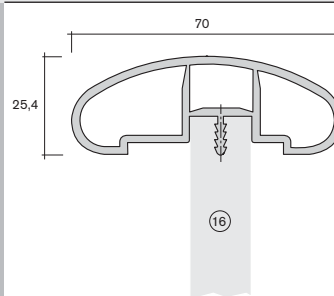
Art.-Nr. Material
 art.-no. material

Bettseitenprofil
bed side profile

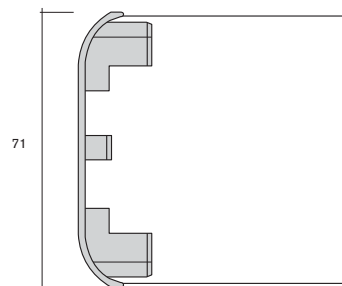


Bezeichnung/description

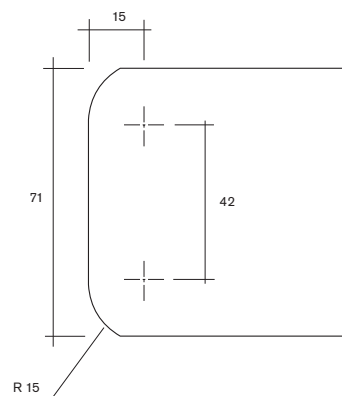
15.7880 Kantenprofil 70 x 25,4
 edge profile 70 x 25.4
 PS



05.5830 Endkappe
 end cap
 PS

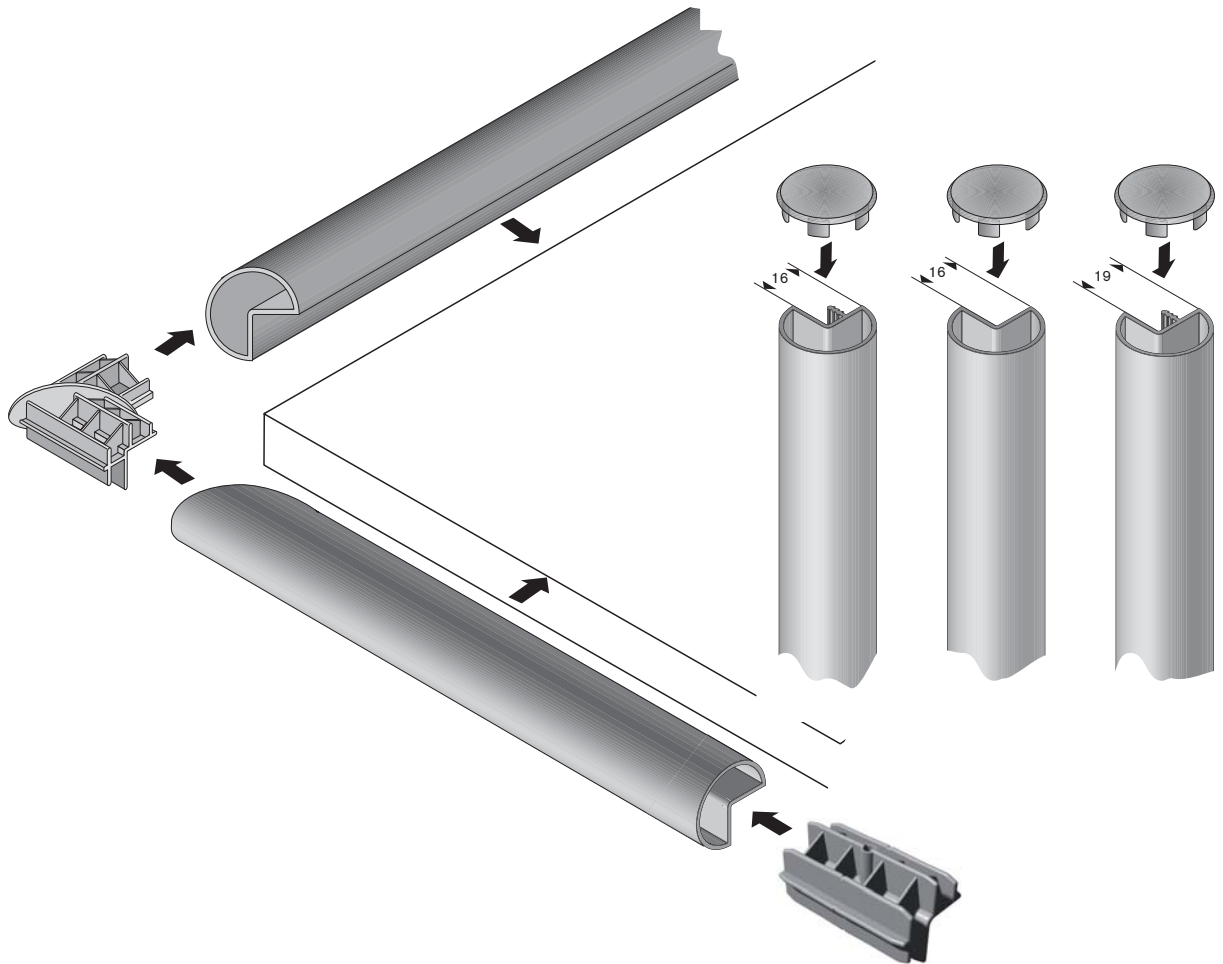


Fräszeichnung für Profil 15.7880
 milling drawing for profile 15.7880
 PS



Art.-Nr. Material
 art.-no. material

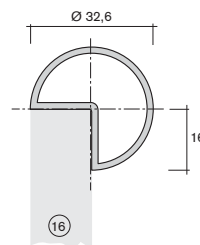
Prinzipdarstellung Kantensystemprofile
description of principle edge profiles system



Bezeichnung/description

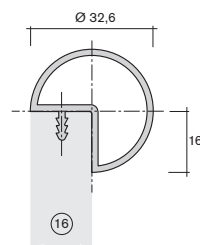
15.8260

Kantenprofil \varnothing 32,6 mm
 edge profile \varnothing 32.6 mm
 PS

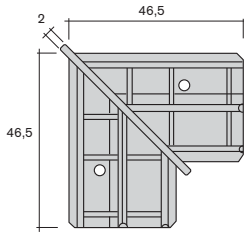
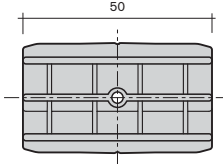
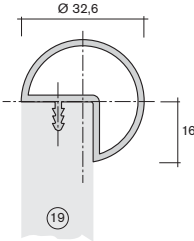
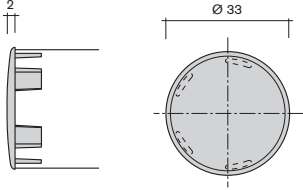


15.8240

Kantenprofil \varnothing 32,6 mm mit Harpune
 edge profile \varnothing 32.6 mm with tongue
 PS



Art.-Nr. Material
 art.-no. material

Bezeichnung/description			
05.6240	Spange 90° für Profil 15.8260 und 15.8240 <i>clip 90° for profile 15.8260 and 15.8240</i> PS		
05.0020	0°-Verbinder für Profil 15.8260 und 15.8240 <i>0°-connecting piece for profile 15.8260 and 15.8240</i> PS		
15.8280	Kantenprofil ø 32,6 mm mit Harpune <i>edge profile ø 32.6 mm with tongue</i> PS		
05.6150	Endkappe für Profil 15.8260, 15.8240 und 15.828 <i>end cap for profile 15.8260, 15.8240 and 15.8280</i> PS		

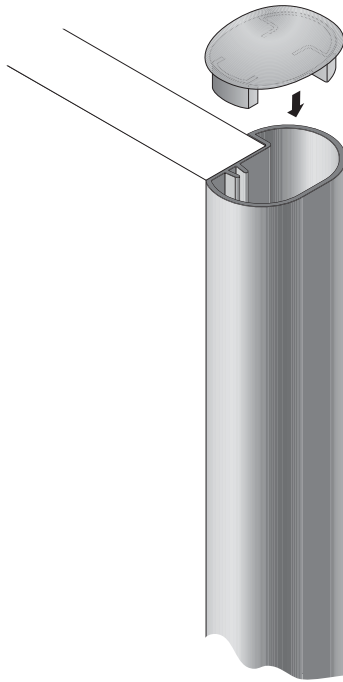
Kantenprofile als Hohlkammerprofile

edge profiles hollow profiles

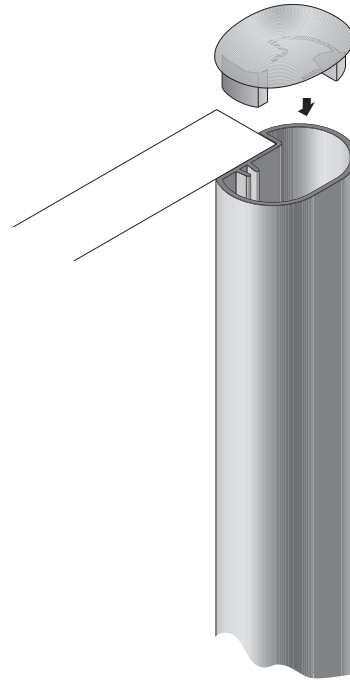


Art.-Nr. Material
 art.-no. material

Einbaumöglichkeit 1
way of installation 1

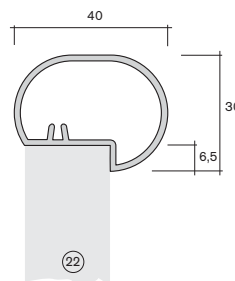


Einbaumöglichkeit 2
way of installation 2

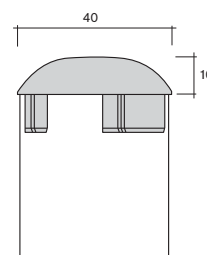


Bezeichnung/description

15.8220 Kantenprofil 40 x 30
 edge profile 40 x 30
 PS



05.6130 Endkappe
 end cap
 PS



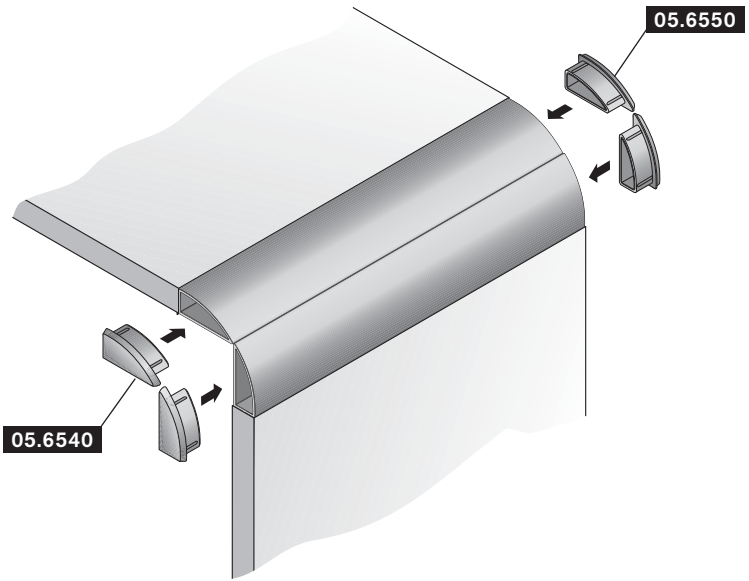
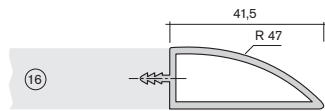
Kantenprofile

edge profiles

Art.-Nr.
art.-no. Material
material

15.8620

Kantenprofil 41,5 x 16
edge profile 41,5 x 16
PS

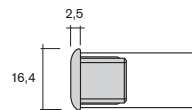


05.6540

Endkappe links
left end cap
PS

05.6550

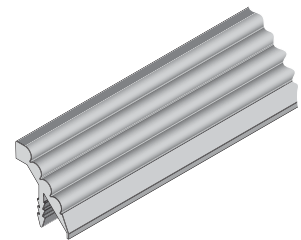
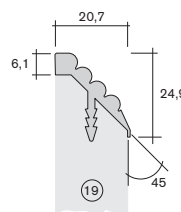
Endkappe rechts
right end cap
PS



05.6540

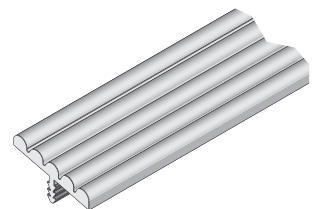
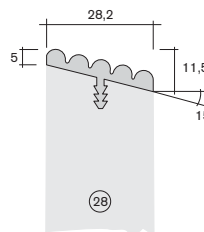
13.7180

Kantenprofil 20,7 x 24,9 mit Harpune
edge profile 20.7 x 24.9 with tongue
PS



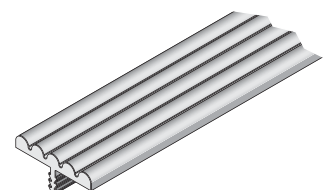
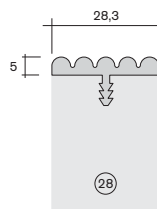
13.4690

Kantenprofil 28,2 x 11,5 mit Harpune
edge profile 28.2 x 11.5 with tongue
PS



13.4700

Kantenprofil 28,3 x 5 mit Harpune
edge profile 28.3 x 5 with tongue
PS



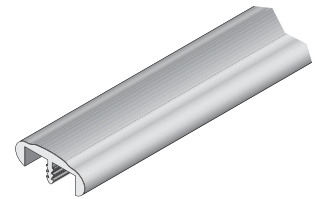
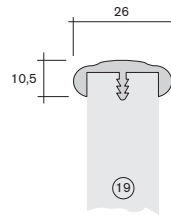
Kantenprofile

edge profiles

Art.-Nr. Material
art.-no. material

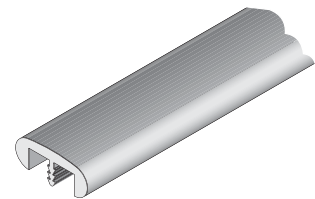
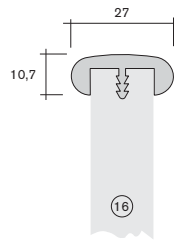
13.4920

Kantenprofil 26 x 10,5 mit Harpune
edge profile 26 x 10.5 with tongue
PS

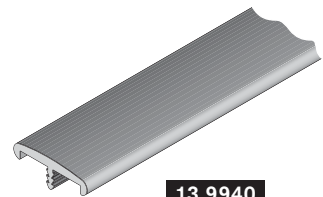
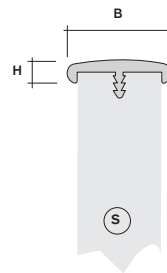


14.1140

Kantenprofil 27 x 10,7 mit Harpune
edge profile 27 x 10.7 with tongue
PS



Kantenprofil mit Harpune
edge profile with tongue
PS

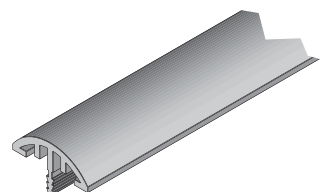
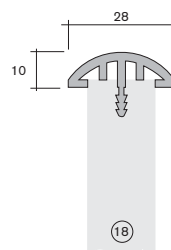


13.9940

	Breite B (mm) width B (mm)	Höhe H (mm) height H (mm)	Plattendicke S (mm) shelf-thickness S (mm)
14.9020	14,4	4,0	12
14.9040	17,4	4,0	15
14.9420	18,6	4,5	16
13.8600	20,0	6,7	16
14.8680	22,8	7,0	19
13.7700	27,6	6,5	22
13.9940	27,6	6,5	23

13.0280

Kantenprofil 28 x 10 mit Harpune
edge profile 28 x 10 with tongue
PS



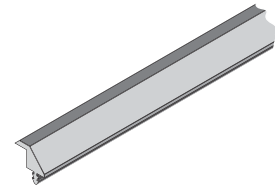
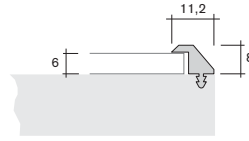
Kantenprofile

edge profiles

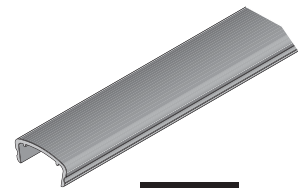
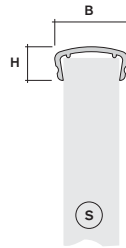
Art.-Nr.
art.-no. Material
material

13.9460

Kantenprofil 11,2 x 8 mit Harpune
edge profile 11.2 x 8 with tongue
PS



Kantenprofil
edge profile
PS



14.2180

	Breite B (mm) width B (mm)	Höhe H (mm) height H (mm)	Plattendicke S (mm) shelf-thickness S (mm)
14.2180	19,6	8,9	15-16
14.2260	21,6	8,9	17-18
14.2080	22,1	8,9	18-19

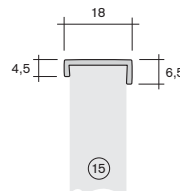
20.6590

Kantenprofil 10 x 3
edge profile 10 x 3
PS



20.7450

Kantenprofil 18 x 4,5/6,5
edge profile 18 x 4,5/6,5
PS



Kantenprofile Winkelprofile mit Harpune

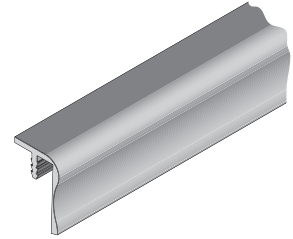
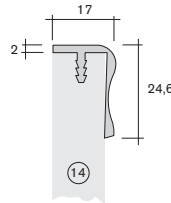
edge profiles angle profiles with tongue



Art.-Nr. Material
art.-no. material

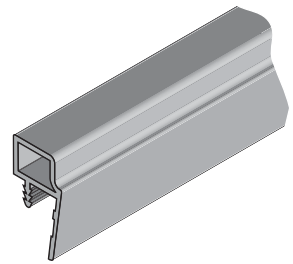
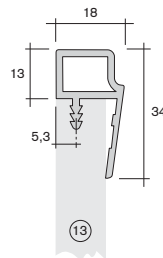
13.5000

Kantenprofil 17 x 24,6 mit Harpune
edge profile 17 x 24.6 with tongue
PS



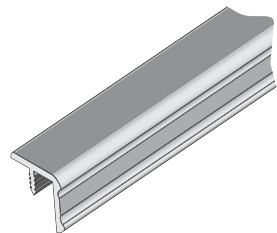
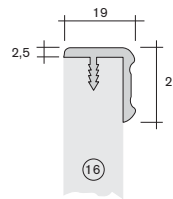
15.6900

Kantenprofil 18 x 34 mit Harpune
edge profile 18 x 34 with tongue
PS



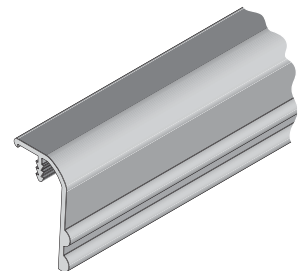
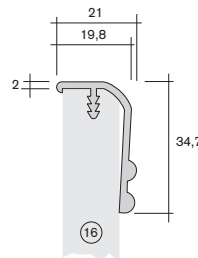
13.3800

Kantenprofil 19 x 20 mit Harpune
edge profile 19 x 20 with tongue
PS



13.8860

Kantenprofil 19,8 x 34,7 mit Harpune
edge profile 19.8 x 34.7 with tongue
PS



Kantenprofile Winkelprofile mit Harpune

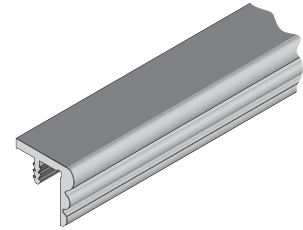
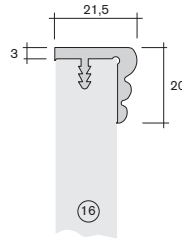
edge profiles angle profiles with tongue



Art.-Nr.
art.-no. Material
material

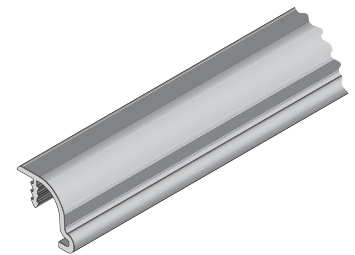
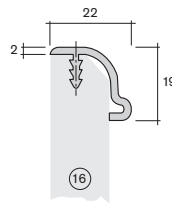
13.9500

Kantenprofil 21,5 x 20 mit Harpune
edge profile 21.5 x 20 with tongue
ABS



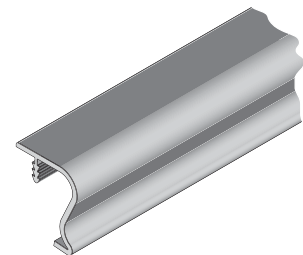
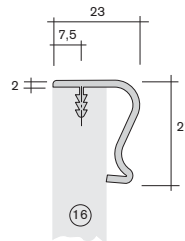
14.9200

Kantenprofil 22 x 19 mit Harpune
edge profile 22 x 19 with tongue
PS



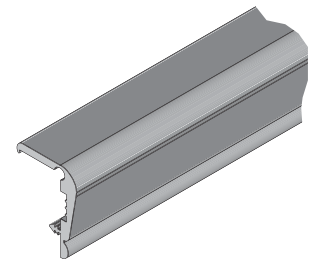
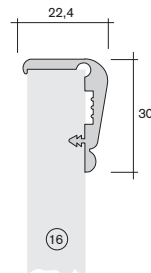
13.8820

Kantenprofil 23 x 27 mit Harpune
edge profile 23 x 27 with tongue
PS



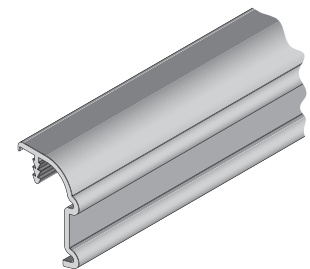
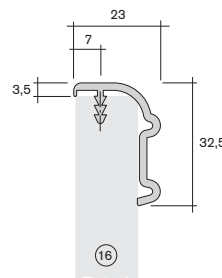
13.5620

Kantenprofil 22,4 x 30 mit Harpune
edge profile 22.4 x 30 with tongue
PS



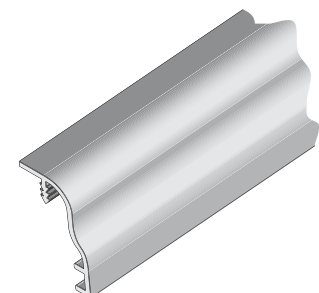
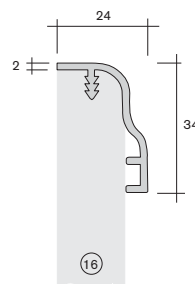
13.5920

Kantenprofil 23 x 32,5 mit Harpune
edge profile 23 x 32.5 with tongue
PS



13.8060

Kantenprofil 24 x 34 mit Harpune
edge profile 24 x 34 with tongue
PS



Kantenprofile mit Doppelharpune

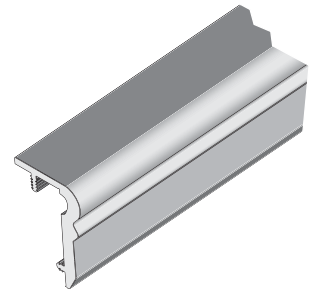
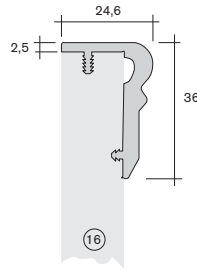
edge profiles with double-tongue



Art.-Nr. Material
art.-no. material

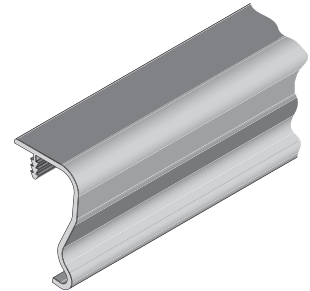
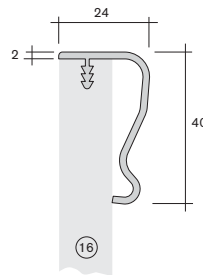
13.5260

Kantenprofil 24,6 x 36 mit Harpune
edge profile 24.6 x 36 with tongue
PS



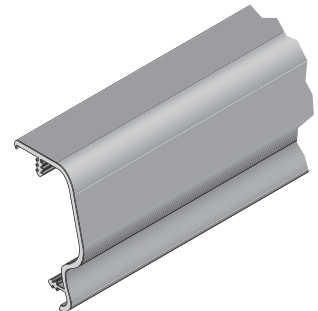
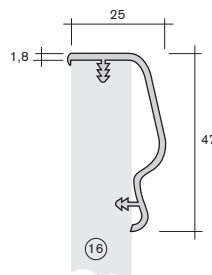
13.8840

Kantenprofil 24 x 40 mit Harpune
edge profile 24 x 40 with tongue
PS



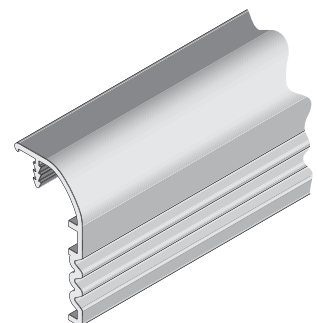
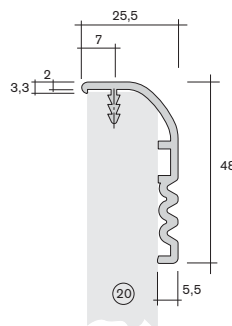
13.6020

Kantenprofil 25 x 47 mit Harpune
edge profile 25 x 47 with tongue
PS



13.7340

Kantenprofil 25,5 x 48 mit Harpune
edge profile 25.5 x 48 with tongue
PS



Kantenprofile Winkelprofile mit Harpune

edge profiles angle profiles with tongue

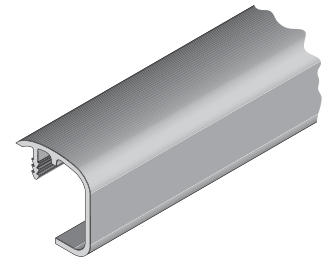
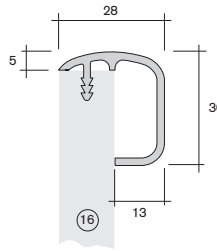


Art.-Nr.
art.-no.

Material
material

13.9280

Kantenprofil 28 x 30 mit Harpune
edge profile 28 x 30 with tongue
PS



Kantenprofile mit Doppelharpune

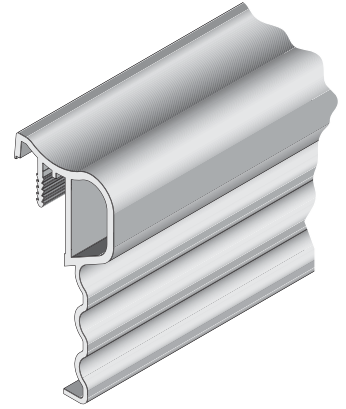
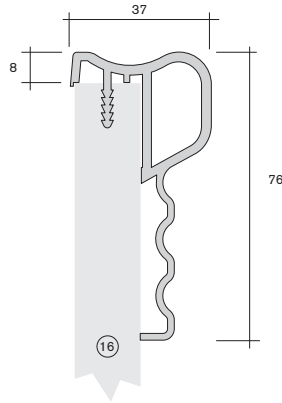
edge profiles with double-tongue



Art.-Nr. Material
art.-no. material

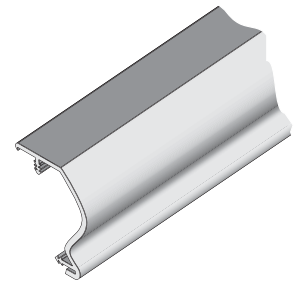
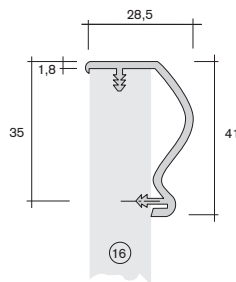
13.8120

Kantenprofil 37 x 76 mit Harpune
edge profile 37 x 76 with tongue
PS



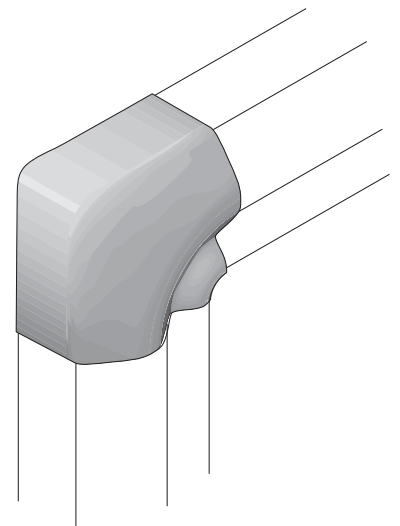
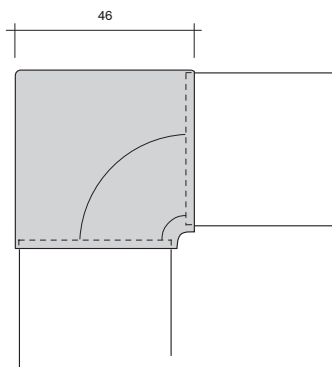
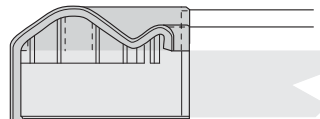
13.5700

Kantenprofil 28,5 x 41 mit Harpune
edge profile 28.5 x 41 with tongue
PS



05.0290

Ecke
corner element
PS



Kantenprofile mit Doppelharpune

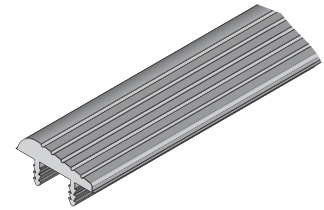
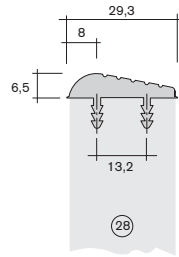
edge profiles with double-tongue



Art.-Nr.
art.-no. Material
material

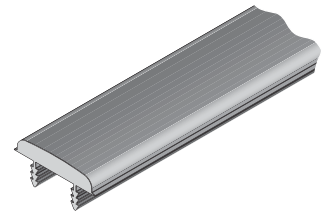
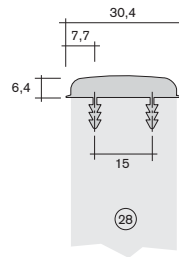
14.5340

Kantenprofil 29,3 x 6,5 mit Harpune
edge profile 29.3 x 6.5 with tongue
PS



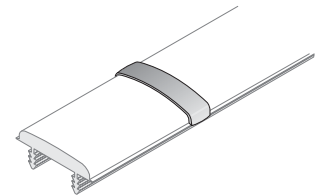
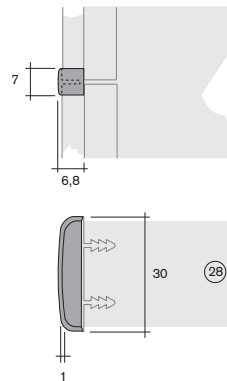
13.8380

Kantenprofil 30,4 x 6,4 mit Harpune
edge profile 30.4 x 6.4 with tongue
PS



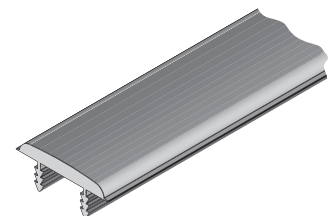
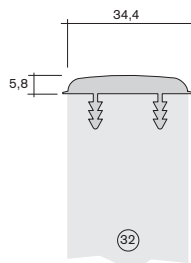
05.0740

Spange
clip
PS



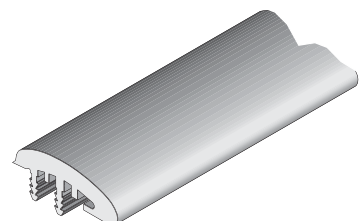
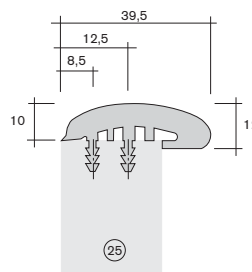
13.8580

Kantenprofil 34,4 x 5,8 mit Harpune
edge profile 34.4 x 5.8 with tongue
PS



13.5160

Kantenprofil 39,5 x 12 mit Harpune
edge profile 39.5 x 12 with tongue
PS



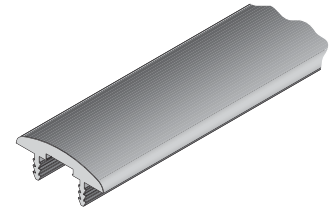
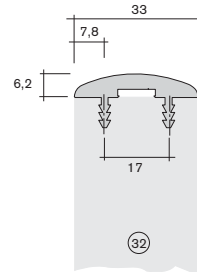
Kantenprofile mit Doppelharpune edge profiles with double-tongue



Art.-Nr. Material
art.-no. material

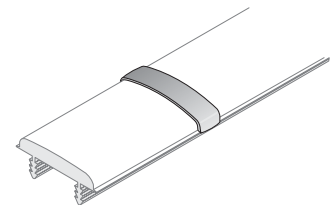
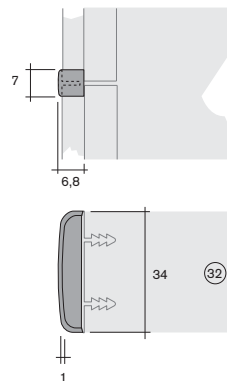
13.5500

Kantenprofil 33 x 6,2 mit Harpune
edge profile 33 x 6.2 with tongue
PS



05.0800

Spange
clip
PS



Kantenprofile mit Doppelharpune

edge profiles with double-tongue

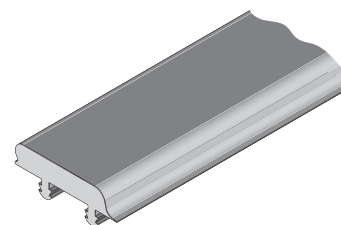
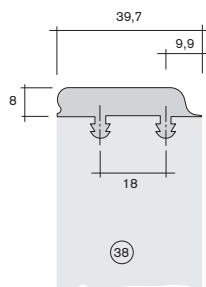


Art.-Nr.
art.-no.

Material
material

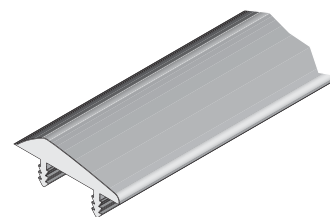
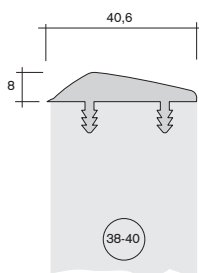
13.8660

Kantenprofil 39,7 x 8 Harpune 5 x 6
edge profile 39.7 x 8 tongue 5 x 6
PS



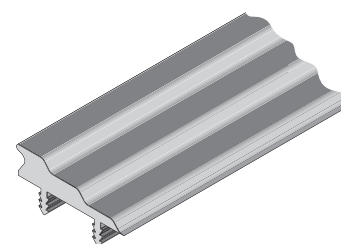
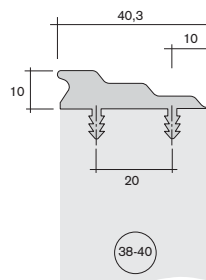
13.9800

Kantenprofil 40,6 x 8 Harpune 4,2
edge profile 40.6 x 8 tongue 4.2
ABS



13.9780

Kantenprofil 40,3 x 10 Harpune 4,2
edge profile 40.3 x 10 tongue 4.2
PS



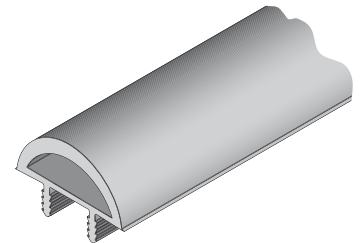
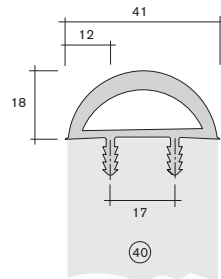
Kantenprofile mit Doppelharpune edge profiles with double-tongue



Art.-Nr. Material
art.-no. material

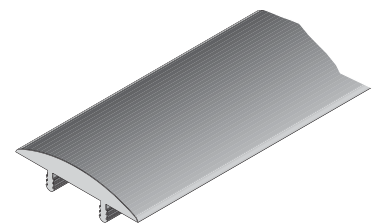
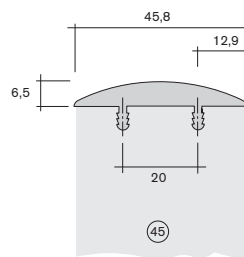
20.1420

Kantenprofil 41 x 18 mit Harpune
edge profile 41 x 18 with tongue
PS



14.5520

Kantenprofil 45,8 x 6,5 mit Harpune
edge profile 45.8 x 6.5 with tongue
PS



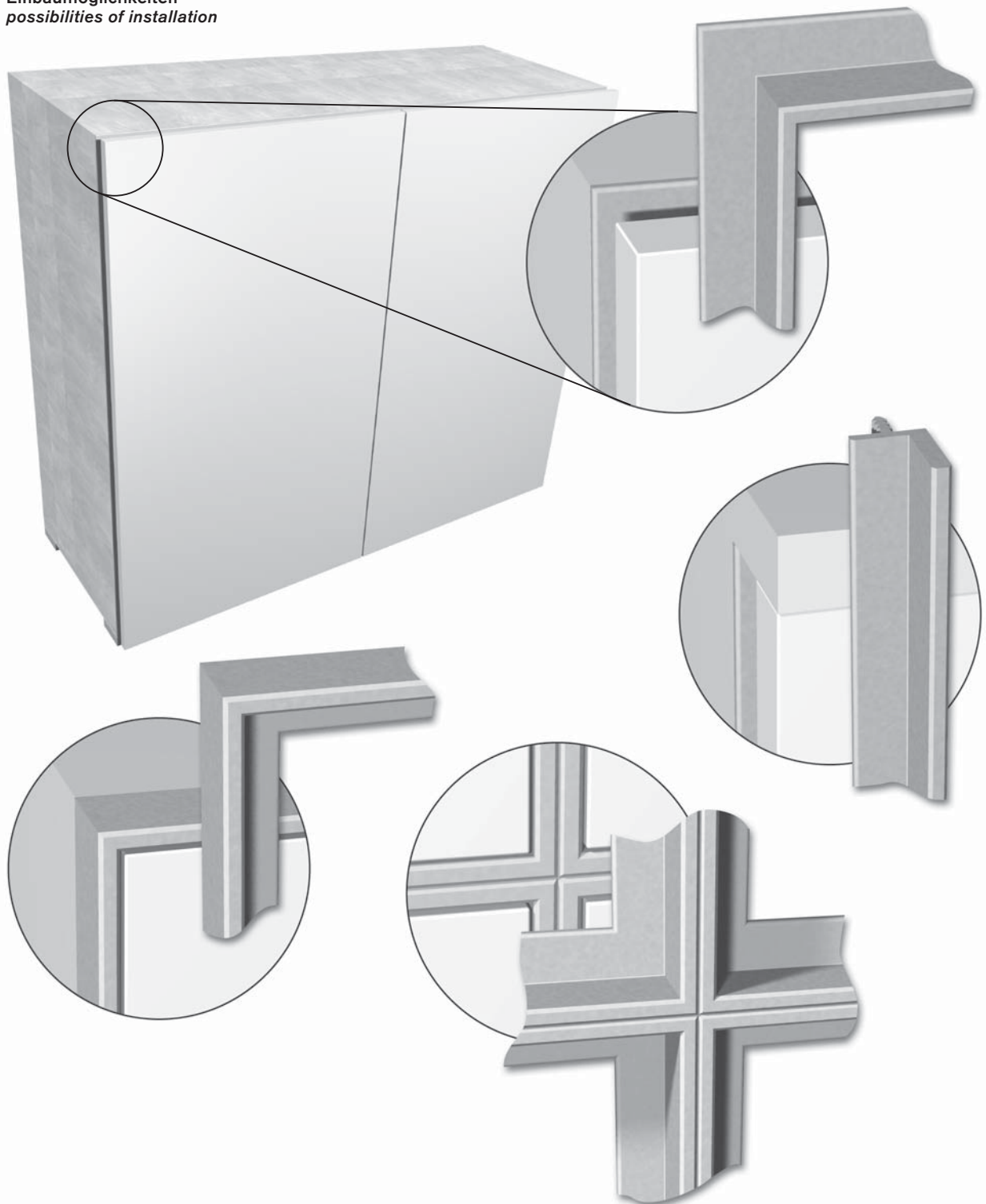
Kantenprofile Vorbauprofile mit Harpune

edge profiles front building profiles with tongue



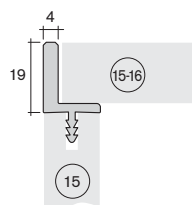
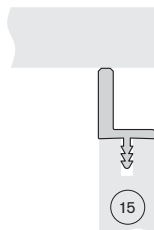
Art.-Nr.
art.-no. Material
material

Einbaumöglichkeiten possibilities of installation



14.9710

Vorbauprofil 15 x 19
front building profile 15 x 19
PS



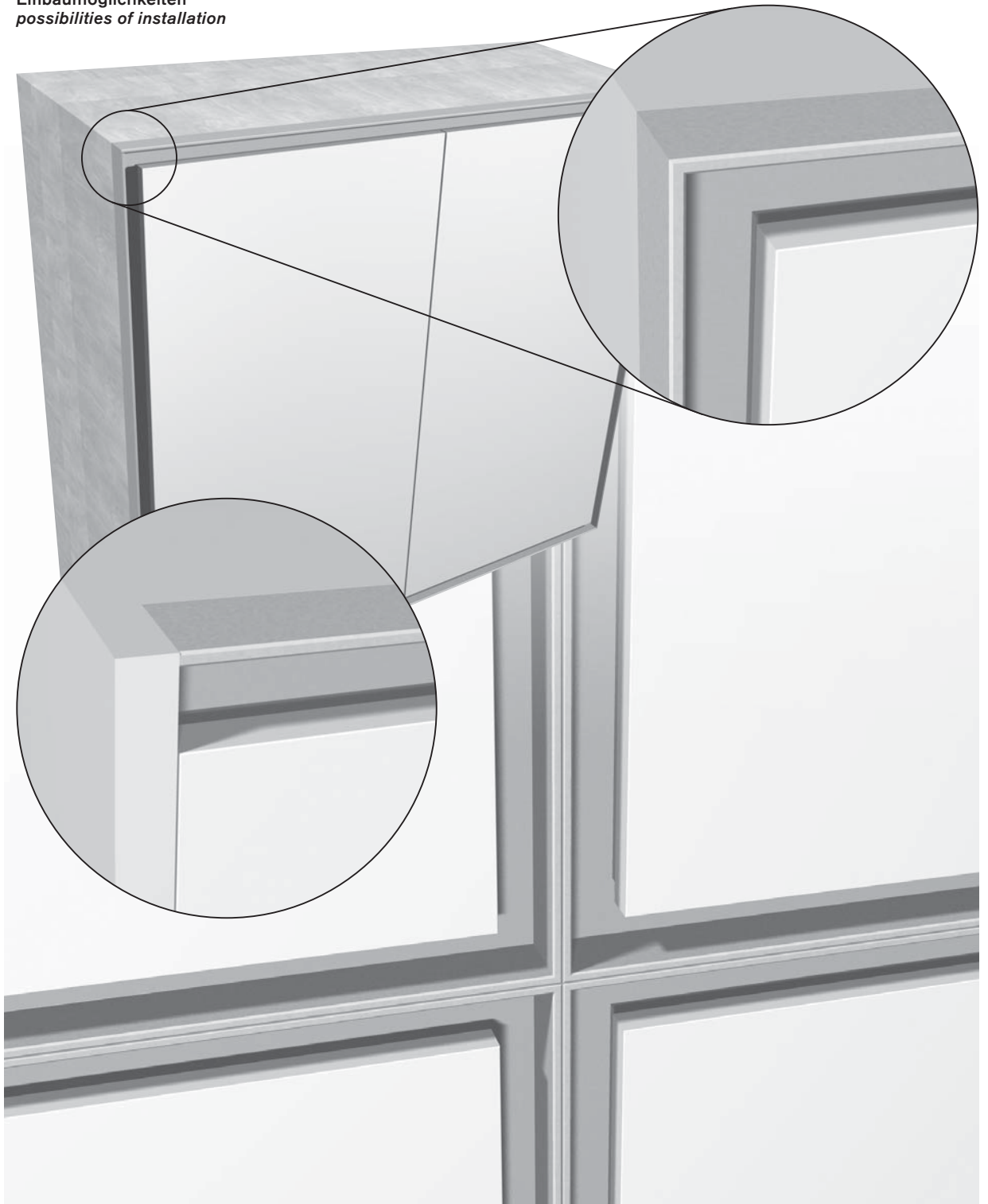
Kantenprofile Vorbauprofile mit Harpune

edge profiles front building profiles with tongue



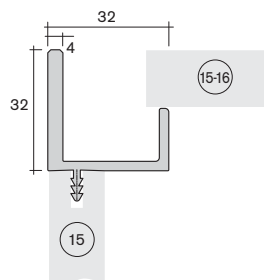
Art.-Nr.
art.-no. Material
material

Einbaumöglichkeiten *possibilities of installation*



14.9610

Vorbauprofil 32 x 32
front building profile 32 x 32
PS



Kantenprofile

edge profiles



Art.-Nr.
art.-no.

Material
material

